


WAAS CH 63147 W28A	APP CRS 280°	Rwy Ldg TDZE Apt Elev	9129 588 592
--	------------------------	-----------------------------	---

RNAV (GPS) RWY 28

NIAGARA FALLS INTL (IAG)

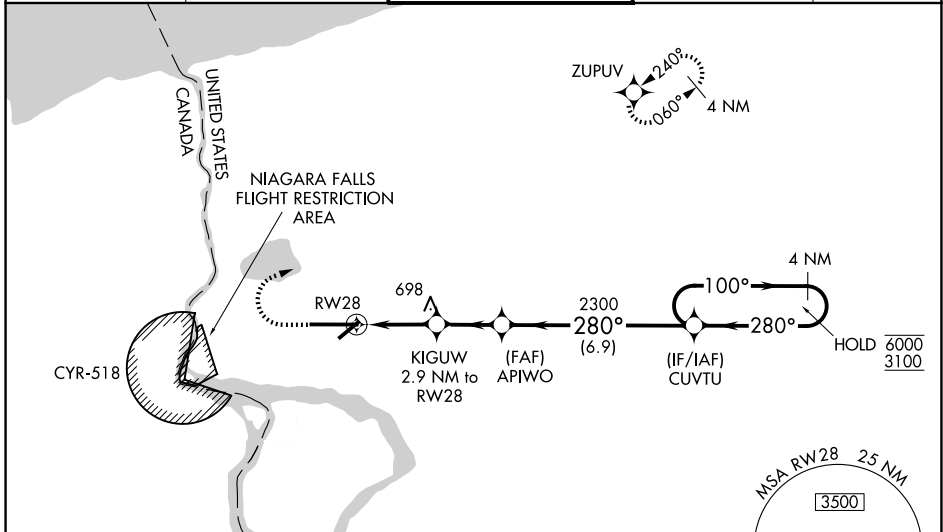
RNP APCH - GPS.

⚠ For uncompensated Baro-VNAV systems, LNAV/VNAV NA below -18°C or above 54°C.
⚠ Rwy 28 helicopter visibility reduction below RVR 4000 not authorized.
 Circling Rwy 6 NA at night.
 Circling NA for Cat E southeast of Rwy 6-24.
 Inop table does not apply to LPV all Cats.
 For inop ALS, increase LNAV/VNAV visibility all Cats to RVR 4500, LNAV visibility all Cats to RVR 5500.

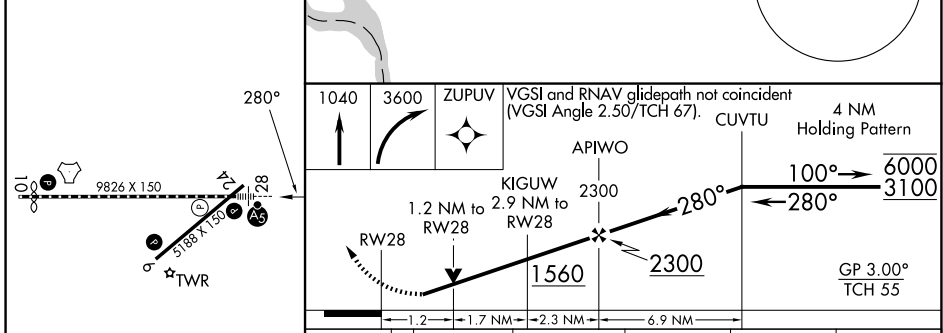
MALSR 

MISSED APPROACH: Climb to 1040 then climbing right turn to 3600 direct ZUPOV and hold, continue climb-in-hold to 3600.

ATIS 120.8 269.4	BUFFALO APP CON 126.5 317.6	NIAGARA TOWER ★ 118.5 (CTAF) 0 349.0	GND CON 125.3 275.8	UNICOM 122.95
----------------------------	---------------------------------------	--	-------------------------------	-------------------------



ELEV 592	D	TDZE 588
----------	----------	----------



CATEGORY	A	B	C	D	E
LPV DA		838/40	250 (300-¾)		
LNAV/VNAV DA		957/40	369 (400-¾)		
LNAV MDA		960/40	372 (400-¾)		
CIRCLING	1100-1	508 (600-1)	1280-2 688 (700-2)	1280-2¼ 688 (700-2¼)	1280-2½ 688 (700-2½)

NE-2, 11 JUN 2026 to 09 JUL 2026

NE-2, 11 JUN 2026 to 09 JUL 2026