

WAAS CH 97333 W24B	APP CRS 240°	Rwy Ldg TDZE 592 Apt Elev 592	5108
--	------------------------	---	-------------

RNAV (GPS) Y RWY 24

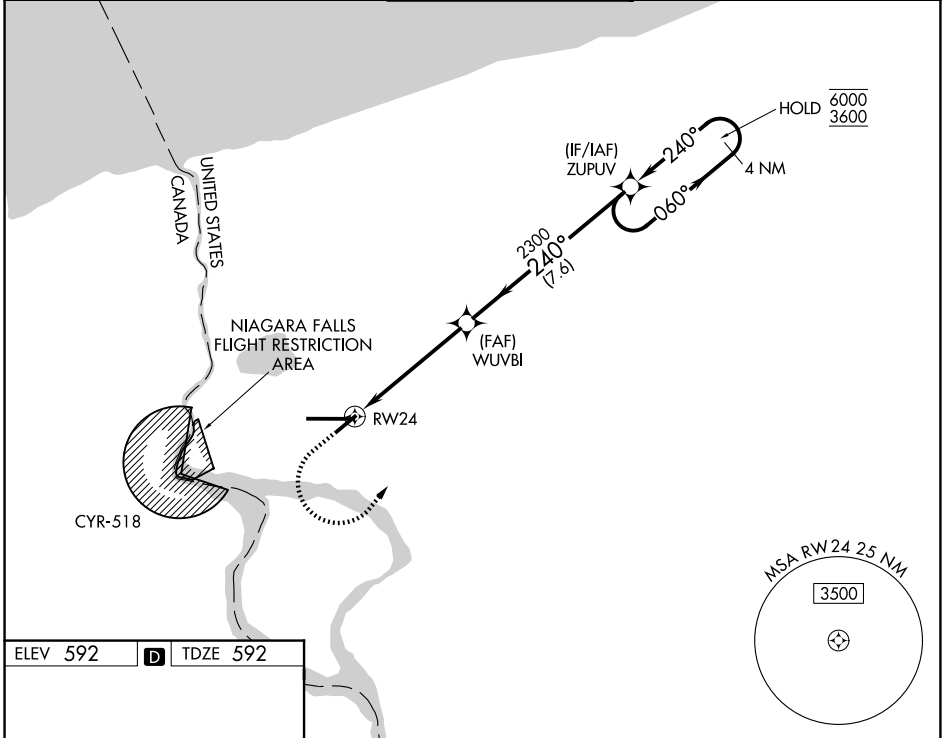
NIAGARA FALLS INTL (IAG)

RNP APCH - GPS

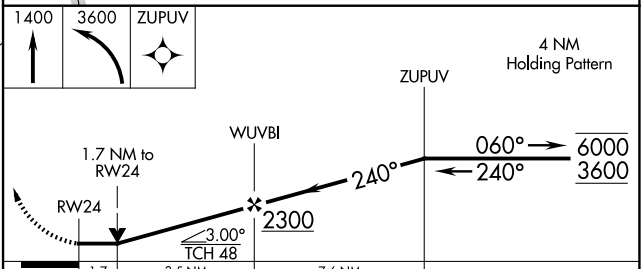
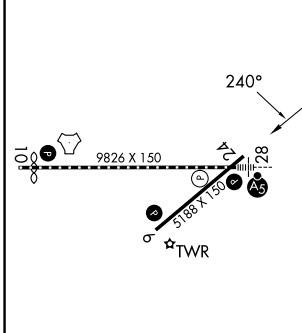
▼
▲ Rwy 24 helicopter visibility reduction below 3/4 SM NA. Circling Rwy 6 NA at night.

MISSED APPROACH: Climb to 1400, then climbing left turn to 3600 direct ZUPOV and hold.

ATIS 120.8 269.4	BUFFALO APP CON 126.5 317.6	NIAGARA TOWER ★ 118.5 (CTAF) 0 349.0	GND CON 125.3 275.8	UNICOM 122.95
----------------------------	---------------------------------------	--	-------------------------------	-------------------------



ELEV 592	D	TDZE 592
----------	----------	----------



REIL Rwy 6 and 24	TDZL/RCLS Rwy 28	RCLS Rwy 10	HIRL Rwy 10-28	MIRL Rwy 6-24
1	1	1	1	1

CATEGORY	A	B	C	D
LP MDA	1180-1	588 (600-1)	1180-1¾	588 (600-1¾)
LNAV MDA	1360-1 768 (800-1)	1360-1¼ 768 (800-1¼)	1360-2½	768 (800-2½)
CIRCLING	1360-1 768 (800-1)	1360-1¼ 768 (800-1¼)	1360-2½	768 (800-2½)

NE-2, 11 JUN 2026 to 09 JUL 2026

NE-2, 11 JUN 2026 to 09 JUL 2026