

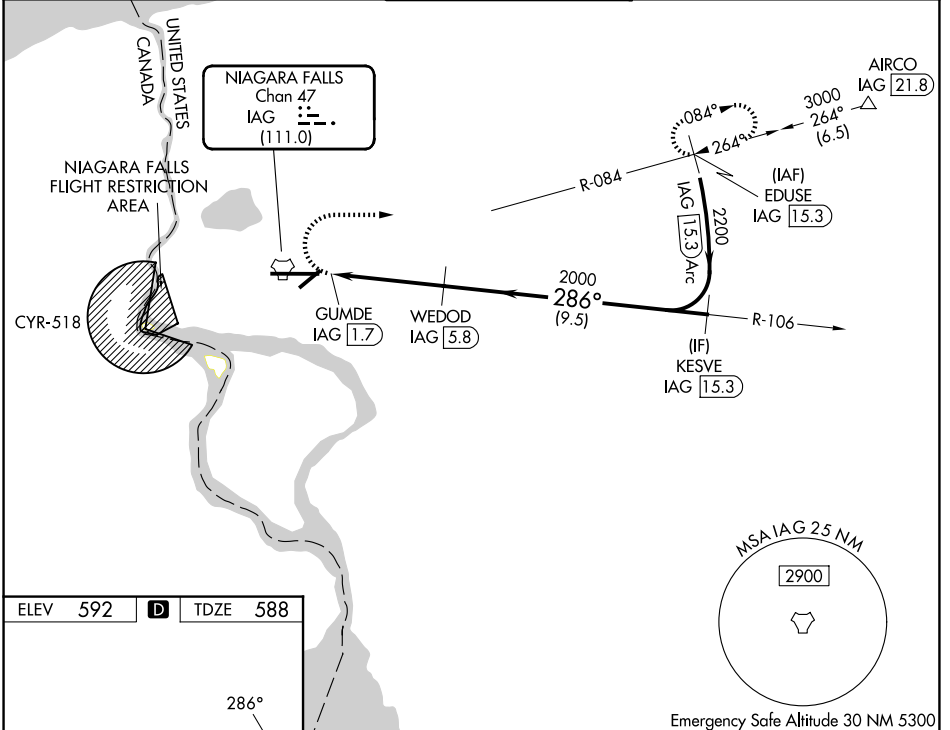
TACAN IAG Chan 47 (111.0)	APP CRS 286°	Rwy Ldg TDZE Apt Elev	9129 588 592
---	------------------------	-----------------------------	---

TACAN RWY 28

NIAGARA FALLS INTL (IAG)

<p>▼ Rwy 28 helicopter visibility reduction below RVR 4000 NA. Circling NA for Cat E southeast of Rwy 6-24. For inop ALS, increase visibility Cats A/B to RVR 5500, Cats C/D/E to 1½ SM.</p>	<p>MALSR</p>	<p>MISSED APPROACH: Climbing right turn to 3000 on heading 100° and IAG TACAN R-084 to EDUSE/IAG 15.3 DME and hold, continue climb-in-hold to 3000.</p>
---	--------------	---

ATIS 120.8 269.4	BUFFALO APP CON 126.5 317.6	NIAGARA TOWER ★ 118.5 (CTAF) 0 349.0	GND CON 125.3 275.8	UNICOM 122.95
----------------------------	---------------------------------------	--	-------------------------------	-------------------------



ELEV 592	D	TDZE 588
----------	----------	----------

REIL Rwy 6 and 24 **1**
 TDZL/RCLS Rwy 28 **1**
 RCLS Rwy 10 **1**
 HIRL Rwy 10-28 **1**
 MIRL Rwy 6-24 **1**

Emergency Safe Altitude 30 NM 5300

VGSI and descent angles not coincident (VGSI Angle 2.50/TCH 67).

3000	hdg 100°	IAG R-084	EDUSE IAG (15.3)
------	----------	-----------	------------------

CATEGORY	A	B	C	D	E
S-28	1080/40	492 (500-¾)	1080/50	492 (500-1)	
CIRCLING	1100-1	508 (600-1)	1280-2 688 (700-2)	1280-2¼ 688 (700-2¼)	1280-2½ 688 (700-2½)

NE-2, 11 JUN 2026 to 09 JUL 2026

NE-2, 11 JUN 2026 to 09 JUL 2026