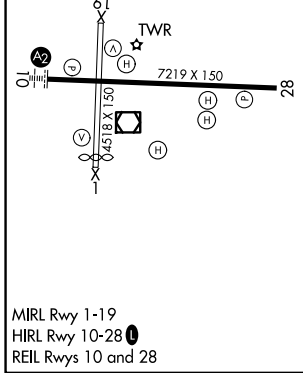
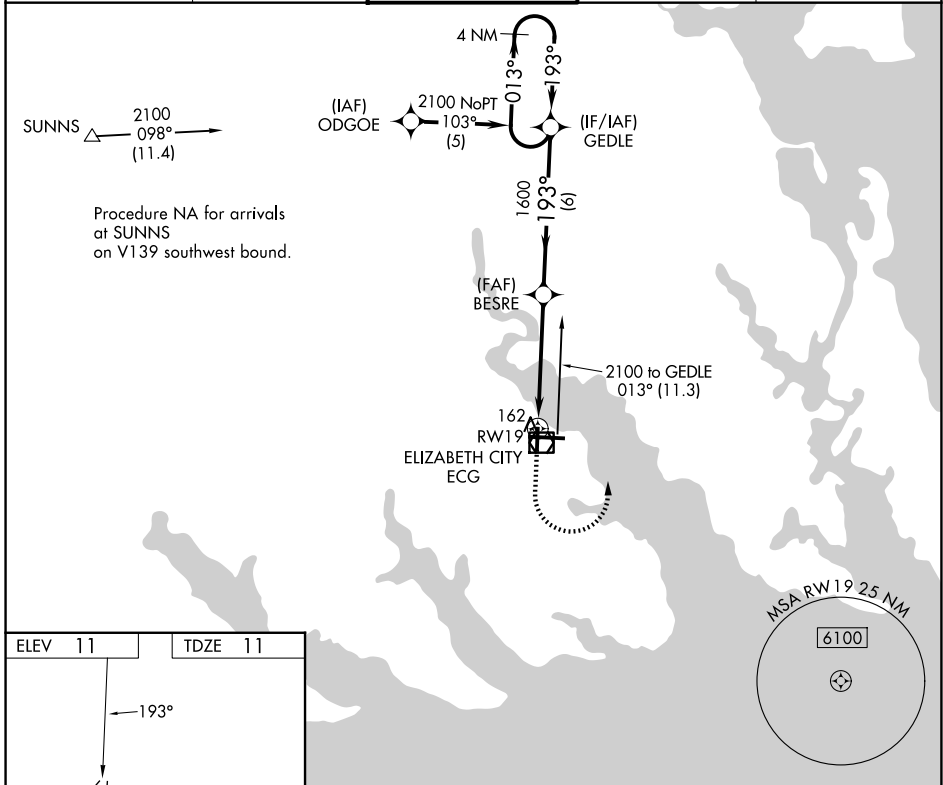


APP CRS	Rwy Ldg	<b>4518</b>
<b>193°</b>	TDZE	<b>11</b>
	Apt Elev	<b>11</b>

# RNAV (GPS) RWY 19

ELIZABETH CITY CG AIR STATION/RGNL (ECG)

RNP APCH.		MISSED APPROACH: Climb to 900 then climbing left turn to 2100 direct GEDLE and hold.		
ASOS	NORFOLK APP CON	ELIZABETH CITY TOWER★	GND CON	UNICOM
<b>124.375</b>	<b>119.55 269.425</b>	<b>120.5 (CTAF) 355.6</b>	<b>121.9</b>	<b>122.95</b>



ELEV 11	TDZE 11	900		2100		GEDLE		VGS1 and descent angles not coincident (VGS1 Angle 2.75/TCH 30).		4 NM Holding Pattern	
		RWY 19		1.5 NM to RWY 19		BESRE		1600		GEDLE	
		3.04° TCH 45		1.5		3.3 NM		6 NM		013°	
CATEGORY	A	B	C	D							
LNAV MDA	480-1	469 (500-1)	480-1 <sup>3</sup> / <sub>4</sub>	469 (500-1 <sup>3</sup> / <sub>4</sub> )							
CIRCLING	480-1	469 (500-1)	640-1 <sup>3</sup> / <sub>4</sub>	629 (700-1 <sup>3</sup> / <sub>4</sub> )	640-2	629 (700-2)					

SE-2, 11 JUN 2026 to 09 JUL 2026

SE-2, 11 JUN 2026 to 09 JUL 2026