

VOR/DME ECG 115.75 Chan 104 (Y)	APP CRS 184°	Rwy Ldg 4518 TDZE 11 Apt Elev 11
---	------------------------	---

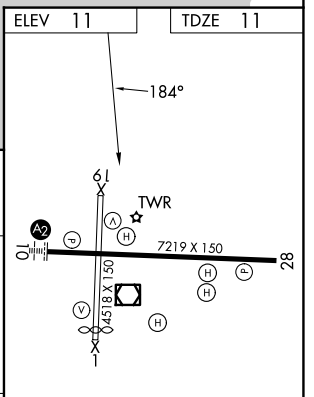
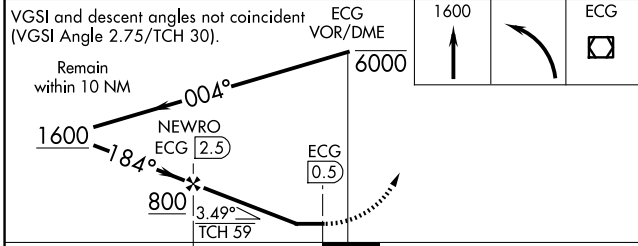
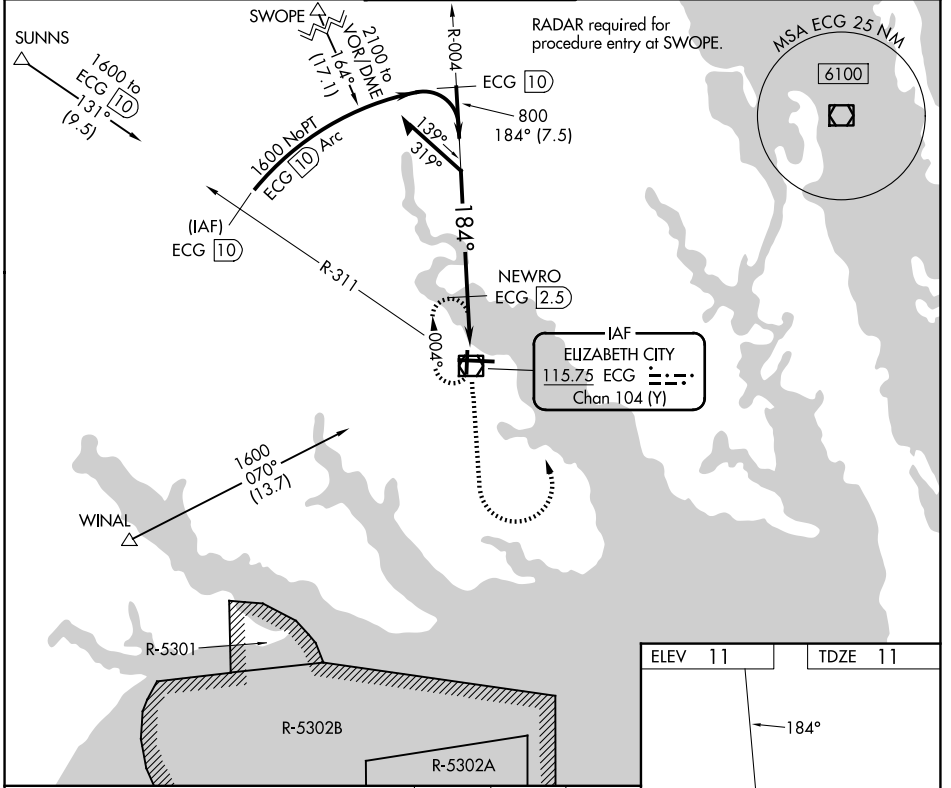
VOR/DME RWY 19

ELIZABETH CITY CG AIR STATION/RGNL (ECG)

Procedure NA when tethered balloon located approximately 2 miles southeast of airport is flying. When local altimeter setting not received, use Currituck altimeter setting and increase all MDAs 40 feet.

MISSED APPROACH: Climb to 1600 then left turn direct ECG VOR/DME and hold.

ASOS 124.375	NORFOLK APP CON 119.55 269.425	ELIZABETH CITY TOWER★ 120.5 (CTAF) 355.6	GND CON 121.9	UNICOM 122.95
------------------------	--	---	-------------------------	-------------------------



CATEGORY	A	B	C	D
S-19	480-1 469 (500-1)		480-1 ³ / ₈ 469 (500-1 ³ / ₈)	480-1 ¹ / ₂ 469 (500-1 ¹ / ₂)
CIRCLING	480-1 469 (500-1)		640-1 ³ / ₄ 629 (700-1 ³ / ₄)	640-2 629 (700-2)

MIRL Rwy 1-19
HIRL Rwy 10-28
REIL Rws 10 and 28

SE-2, 11 JUN 2026 to 09 JUL 2026

SE-2, 11 JUN 2026 to 09 JUL 2026