

BRIDGEHAVEN ONE DEPARTURE

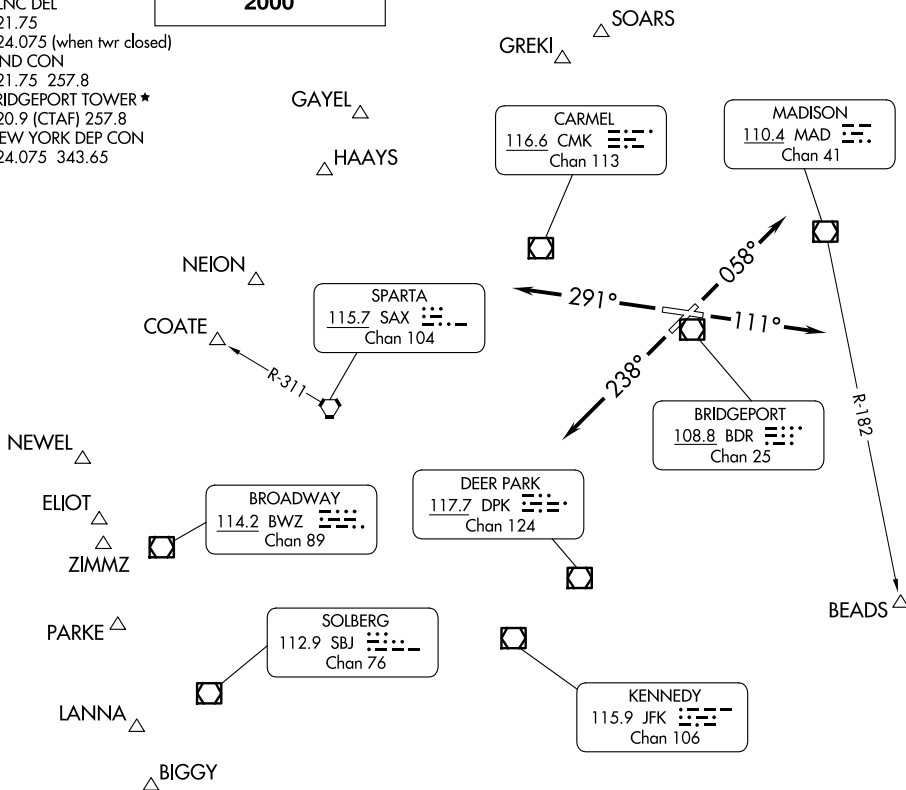
AL-621 (FAA)

BRIDGEPORT, CONNECTICUT

ATIS
119.15
CLNC DEL
121.75
124.075 (when twr closed)
GND CON
121.75 257.8
BRIDGEPORT TOWER ★
120.9 (CTAF) 257.8
NEW YORK DEP CON
124.075 343.65

**TOP ALTITUDE:
2000**

RADAR required.



TAKEOFF MINIMUMS:
Rwys 6, 11, 24: Standard.
Rwy 29: 600-2³/₄ or standard with minimum
climb of 300' per NM to 700.

- NOTE: BEADS Departures expect vectors to MAD R-182. NOTE: Chart not to scale.
 NOTE: COATE Departures expect vectors to SAX/SAX R-311.
 NOTE: ELIOT authorized for all aircraft types but restricted to a final altitude of 14000 or 16000.
 NOTE: NEWEL authorized only for jet aircraft requesting a final altitude of FL180 and above.
 NOTE: ZIMMZ authorized for all aircraft types but restricted to a final altitude of FL180 and above.

DEPARTURE ROUTE DESCRIPTION

TAKEOFF RUNWAY 6: Climb heading 058°, thence. . .
TAKEOFF RUNWAY 11: Climb heading 111°, thence. . .
TAKEOFF RUNWAY 24: Climb heading 238°, thence. . .
TAKEOFF RUNWAY 29: Climb heading 291°, thence. . .
 . . . expect vectors to assigned route/fix. Maintain 2000. Expect clearance to filed
 altitude/flight level within ten (10) minutes after departure.

NE-1, 11 JUN 2026 to 09 JUL 2026

NE-1, 11 JUN 2026 to 09 JUL 2026