

TYLER, TEXAS

AL-622 (FAA)

26022

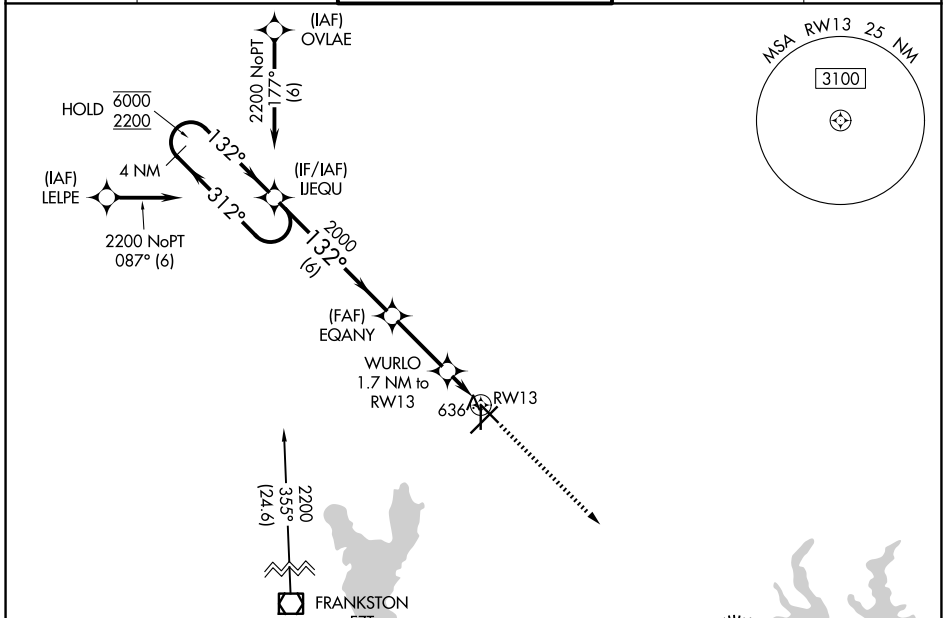
WAAS CH 45701 W13A	APP CRS 132°	Rwy Ldg 5198 TDZE 539 Apt Elev 544
--	------------------------	---

RNAV (GPS) RWY 13

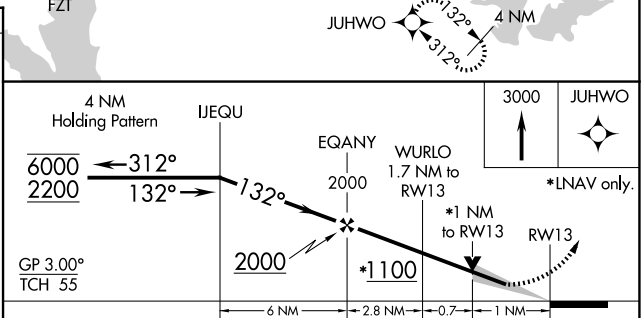
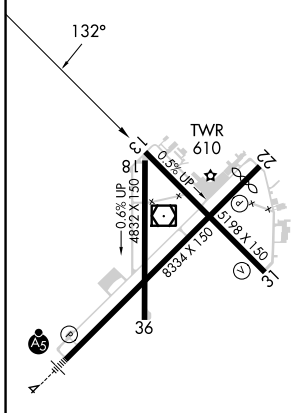
TYLER POUNDS RGNL (TYR)

RNP APCH.	MISSED APPROACH: Climb to 3000 direct JUHWO and hold.
<p>▼ For uncompensated Baro-VNAV systems, LNAV/VNAV NA below -5°C or above 54°C.</p>	

ATIS 126.25	LONGVIEW APP CON * 128.75 379.15	POUNDS TOWER* 120.1 (CTAF) 257.8	GND CON 121.9	UNICOM 122.95
-----------------------	--	--	-------------------------	-------------------------



ELEV 544	D	TDZE 539
-----------------	----------	-----------------



CATEGORY	A	B	C	D
LPV DA		739-3/4	200 (200-3/4)	
LNAV/VNAV DA		820-7/8	281 (300-7/8)	
LNAV MDA		900-1	361 (400-1)	
CIRCLING	980-1 436 (500-1)	1020-1 476 (500-1)	1160-1 3/4 616 (700-1 3/4)	1280-2 1/4 736 (800-2 1/4)

REIL Rwy 22
MIRL Rwy 18-36
HIRL Rwy 4-22 and 13-31

TYLER, TEXAS
Amdt 3A 08OCT20

32°21'N-95°24'W

TYLER POUNDS RGNL (TYR) RNAV (GPS) RWY 13

SC-2, 11 JUN 2026 to 09 JUL 2026

SC-2, 11 JUN 2026 to 09 JUL 2026