

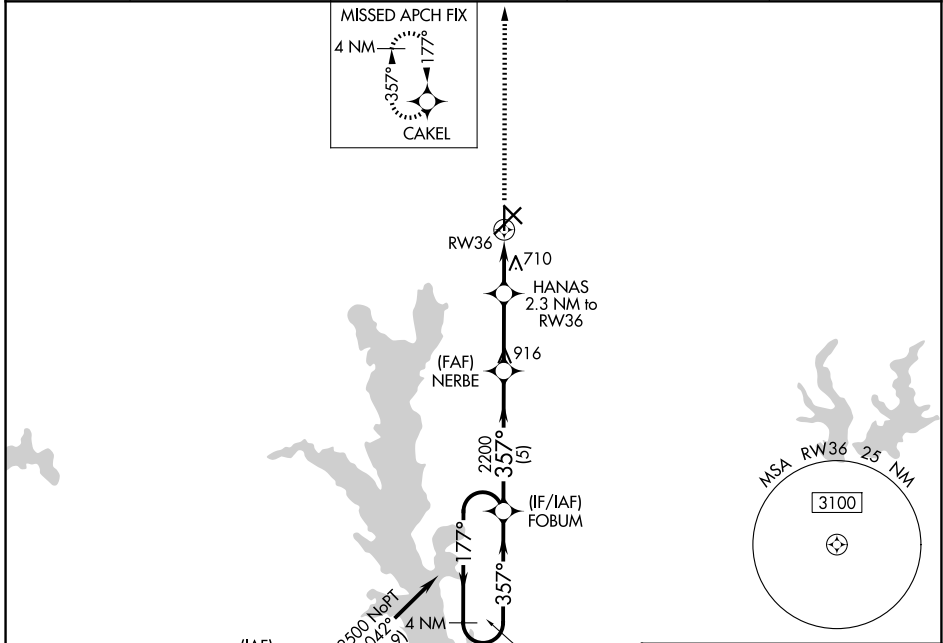
WAAS CH <b>73037</b> <b>W36A</b>	APP CRS <b>357°</b>	Rwy Ldg TDZE Apt Elev	<b>4832</b> <b>544</b> <b>544</b>
--	------------------------	-----------------------------	---

# RNAV (GPS) RWY 36

TYLER POUNDS RGNL (TYR)

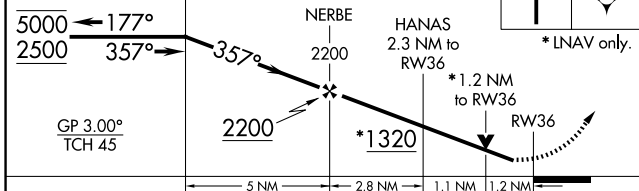
RNP APCH.	<p><b>▼</b> Rwy 36 helicopter visibility reduction below 3/4 SM NA. For uncompensated Baro-VNAV systems, LNAV/VNAV NA below -6°C or above 54°C</p> <p><b>▲</b> MISSED APPROACH: Climb to 2500 direct CAKEL and hold.</p>
-----------	--

ATIS <b>126.25</b>	LONGVIEW APP CON ★ <b>128.75 379.15</b>	POUNDS TOWER ★ <b>120.1 (CTAF) 0 257.8</b>	GND CON <b>121.9</b>	UNICOM <b>122.95</b>
-----------------------	--	---	-------------------------	-------------------------

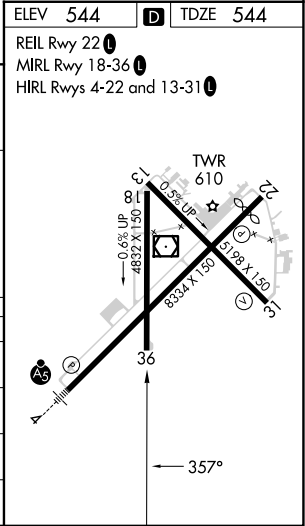


ELEV 544	<b>D</b> TDZE 544
----------	-------------------

REIL Rwy 22 **0**  
MIRL Rwy 18-36 **0**  
HIRL Rwy 4-22 and 13-31 **0**



CATEGORY	A	B	C	D
LPV DA		794-1	250 (300-1)	
LNAV/VNAV DA		799-1	255 (300-1)	
LNAV MDA	960-1	416 (500-1)	960-1 1/8	416 (500-1 1/8)
CIRCLING	980-1 436 (500-1)	1020-1 476 (500-1)	1160-1 3/4 616 (700-1 3/4)	1280-2 1/4 736 (800-2 1/4)



SC-2, 11 JUN 2026 to 09 JUL 2026

SC-2, 11 JUN 2026 to 09 JUL 2026