

WAAS CH 61039 W18A	APP CRS 176°	Rwy Ldg TDZE Apt Elev	9180 7 11
--	------------------------	-----------------------------	--------------------------------------

RNAV (GPS) RWY 18

ST PETE-CLEARWATER INTL (PIE)

RNP APCH - GPS.

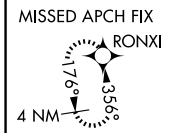
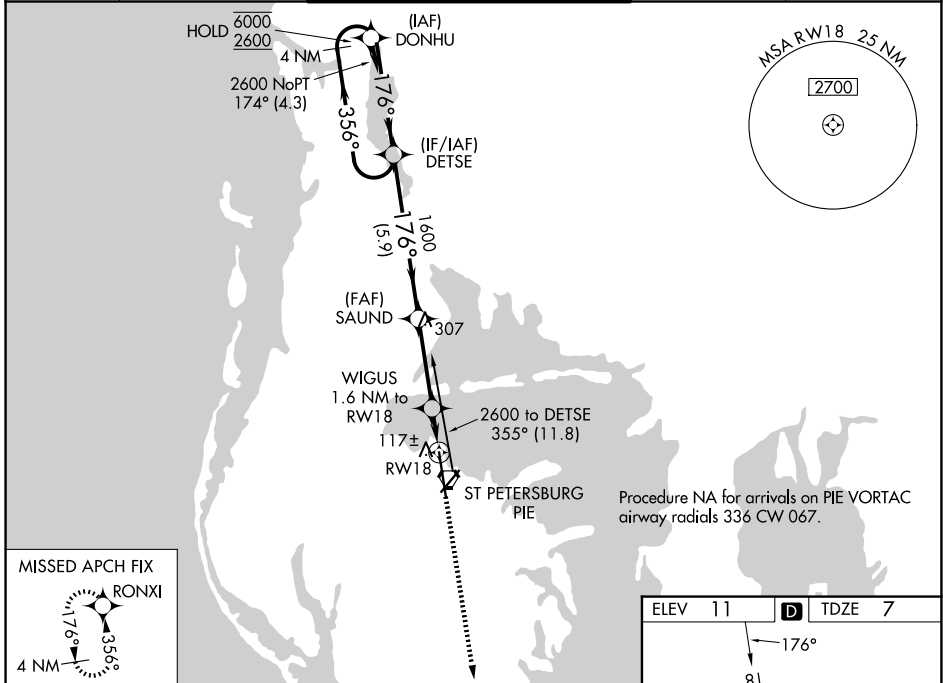
⚠ Circling to Rwy 22 NA at night. For uncompensated Baro-VNAV systems, LNAV/VNAV NA below 3°C or above 54°C. For inop ALS, increase LNAV/VNAV all Cats visibility to RVR 4500 and LNAV Cats C and D visibility to RVR 5500.

MALSR

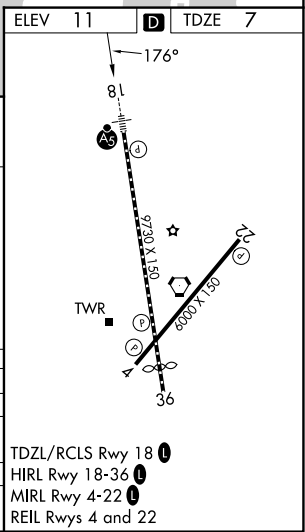
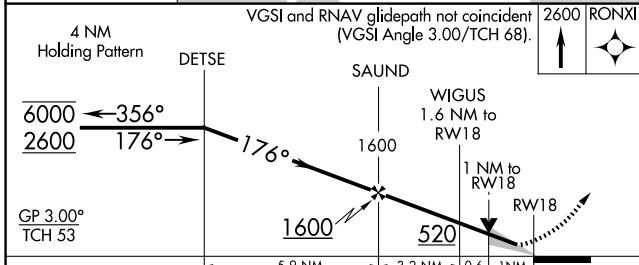


MISSED APPROACH: Climb to 2600 direct RONXI and hold.

ATIS 134.5	TAMPA APP CON 125.3 316.05	ST PETERSBURG-CLEARWATER TOWER * 118.3 (CTAF) 0 257.8	GND CON 121.9 348.6	UNICOM 122.95
----------------------	--------------------------------------	---	-------------------------------	-------------------------



Procedure NA for arrivals on PIE VORTAC airway radials 336 CW 067.



CATEGORY	A	B	C	D
LPV DA	207/18 200 (200-½)			
LNAV/VNAV DA	278/24 271 (300-½)			
LNAV MDA	380/24	373 (400-½)	380/35	373 (400-¾)
CIRCLING	520-1	509 (600-1)	600-1½	620-2
			589 (600-1½)	609 (700-2)

SE-3, 11 JUN 2026 to 09 JUL 2026

SE-3, 11 JUN 2026 to 09 JUL 2026