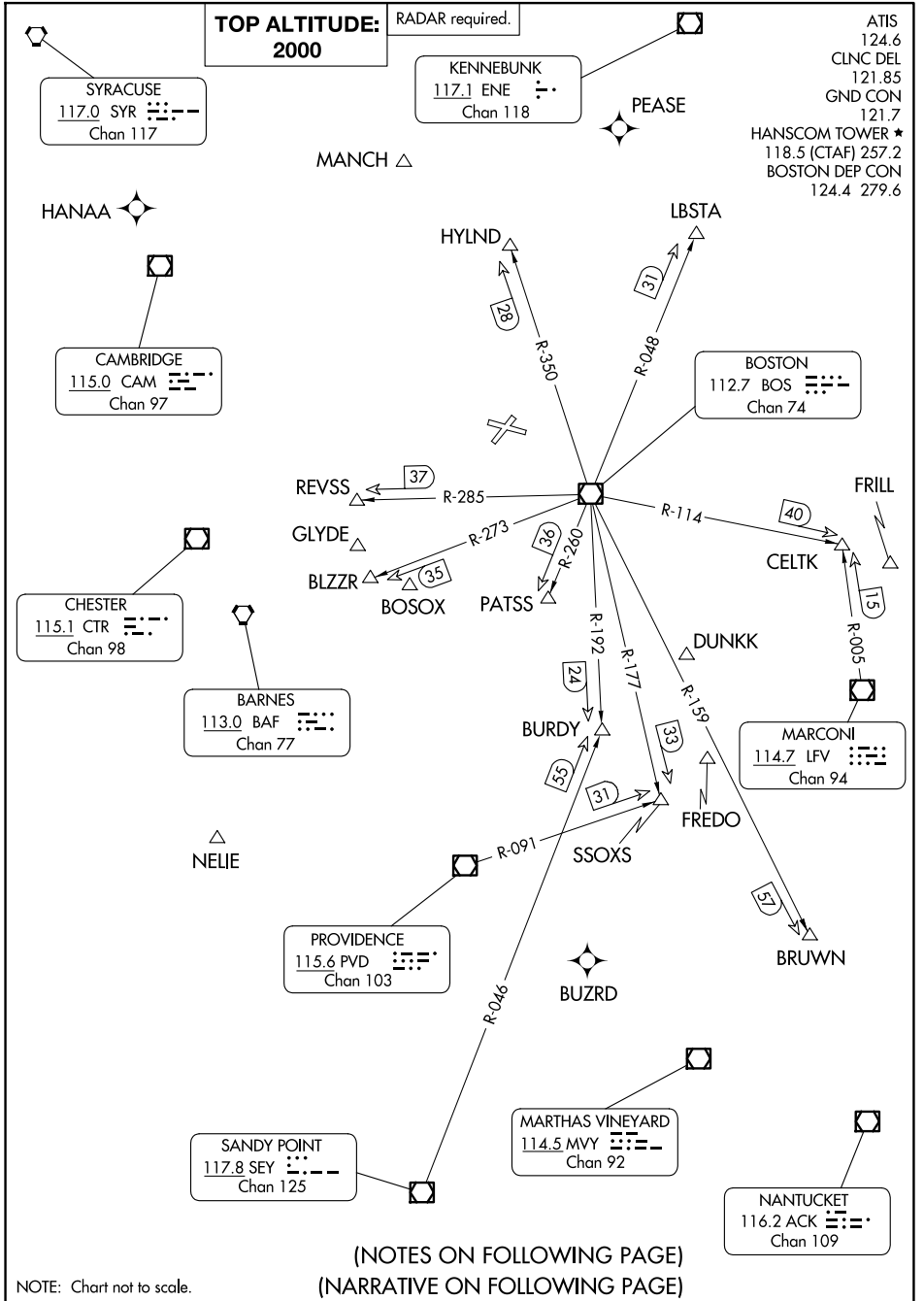


HANSCOM FIVE DEPARTURE

BEDFORD, MASSACHUSETTS



HANSCOM FIVE DEPARTURE



DEPARTURE ROUTE DESCRIPTION

TAKEOFF ALL RUNWAYS: Climb on heading as assigned by ATC, thence....

....expect RADAR vectors to assigned route/navaid/fix. Maintain 2000. Expect clearance to filed altitude/flight level within ten (10) minutes after departure.

NOTE: Non-RNAV equipped aircraft can expect vectors on assigned route.

NOTE: BLZZR DEPARTURES expect vectors on BOS R-273, DME required.

NOTE: BRUWN DEPARTURES expect vectors on BOS R-159, DME required.

NOTE: CELTK DEPARTURES expect vectors on BOS R-114.

NOTE: HYLND DEPARTURES expect vectors on BOS R-350, DME required.

NOTE: PATSS DEPARTURES expect vectors on BOS R-260, DME required.

NOTE: REVSS DEPARTURES expect vectors on BOS R-285, DME required.

NOTE: SSOXS DEPARTURES expect vectors on BOS R-177.

TAKEOFF MINIMUMS:

Rwys 5, 29: Standard.

Rwy 11: 300-1 or Standard with minimum climb of 258' per NM to 400.

Rwy 23: 300-1½ or Standard with minimum climb of 439' per NM to 400.

NE-1, 11 JUN 2026 to 09 JUL 2026

NE-1, 11 JUN 2026 to 09 JUL 2026