

HI-TACAN Y RWY 22

VORTAC HRV 114.1 Chan 88	APCH CRS 237°	Rwy ldg 10,000 TDZE 0 Arpt Elev 2
--	-------------------------	--

[USN]

NEW ORLEANS NAS JRB (ALVIN CALLENDER FLD) (KNBG)

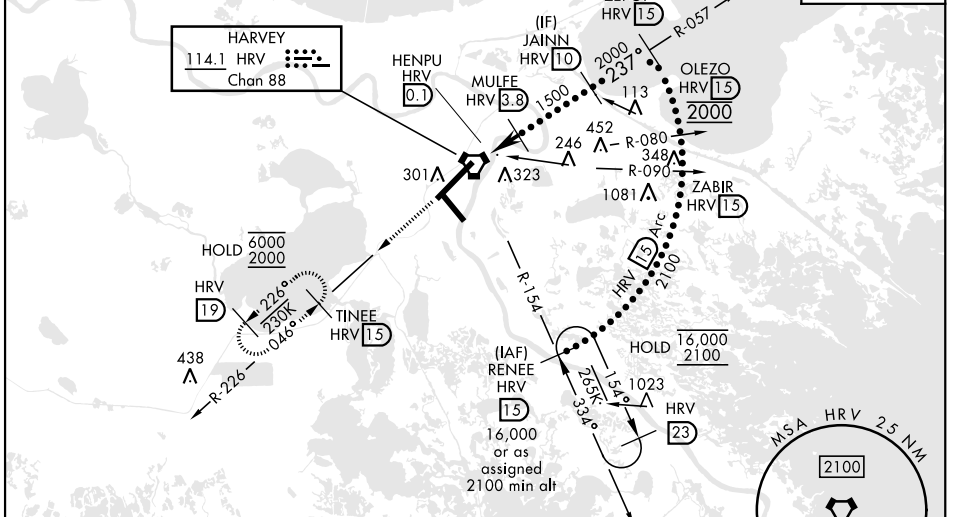
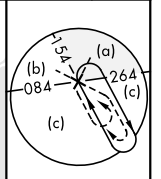
⚠ * When ALS inop, increase vis CAT CDE vis to 1½ miles.
** Circling not authorized for CAT E NW of Rwy 4-22.



MISSSED APPROACH: Climb to 2000 direct TINEE and hold.

ATIS ★ 279.55	APP CON 123.85 256.9	NAVY NEW ORLEANS TOWER ★ 0 123.8 340.2 (CTAF)	GND CON 121.6 270.35	ASR/PAR
-------------------------	--------------------------------	---	--------------------------------	---------

CAUTION: FAC is 611' from RCL at 3000' from thld.

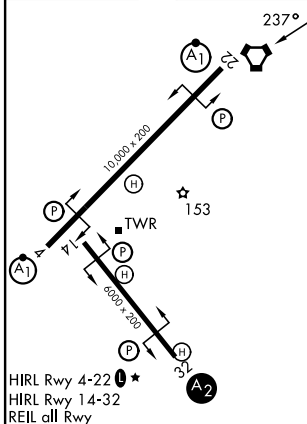


SC-4, 11 JUN 2026 to 09 JUL 2026

SC-4, 11 JUN 2026 to 09 JUL 2026

EMERG SAFE ALT 100 NM 3000

ELEV	2	TDZE	0
------	---	------	---



HIRL Rwy 4-22 ★
 HIRL Rwy 14-32
 REIL all Rwy

2000	TINEE HRV 15	MULFEE HRV 3.8	JAINN HRV 10
HRV VORTAC	HRV 0.6	HRV 0.1	HRV 23
0.9 NM	3.7 NM		
CATEGORY	C	D	E
S-22 *	480-1	480 (500-1)	
CIRCLING **	640-1¼ 638 (700-1¼)	660-2 658 (700-2)	680-2½ 678 (700-2½)

HI-TACAN Y RWY 22