

# ILS or LOC/DME RWY 4

NEW ORLEANS NAS JRB  
(ALVIN CALLENDER FLD) (KNBG)

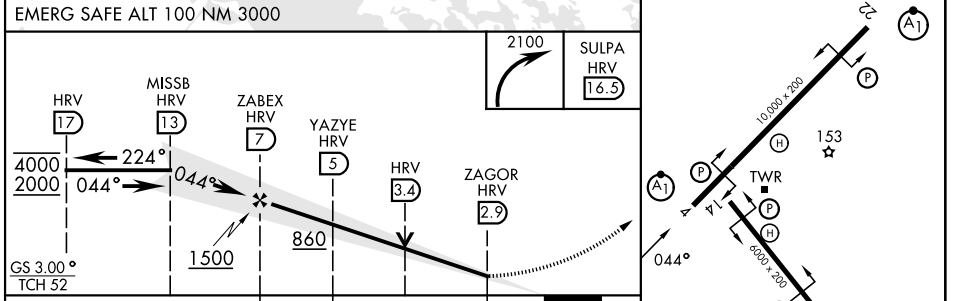
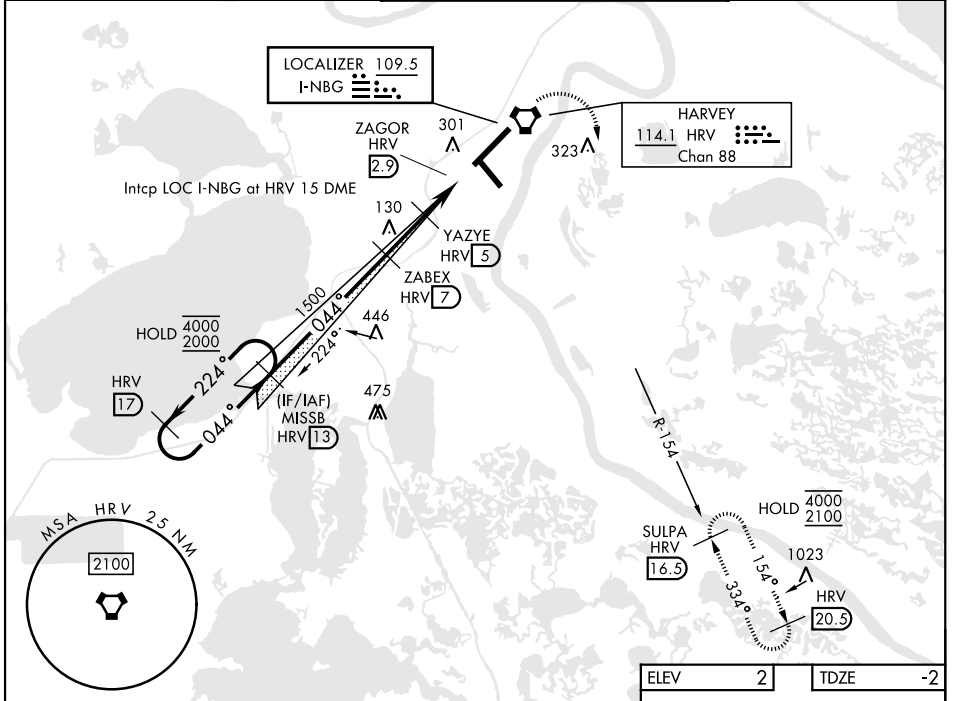
LOC I-NBG <b>109.5</b>	APCH CRS <b>044°</b>	Rwy Idg <b>10,000</b> TDZE Arprt Elev <b>-2</b>	[USN]
---------------------------	-------------------------	---	-------

\* When ALS inop, increase vis to 3/4 mile.  
 \*\* When ALS inop, increase CAT AB vis to 1 mile; CAT CDE vis to 1 1/8 miles.  
 \*\*\* Circling not authorized for CAT E NW of Rwy 4-22.

ALSF-1

MISSED APPROACH: Climbing right turn to 2100 direct SULPA and hold.

ATIS★ <b>279.55</b>	APP CON <b>123.85 256.9</b>	NAVY NEW ORLEANS TOWER★ <b>123.8 340.2</b> (CTAF)	GND CON <b>121.6 270.35</b>	ASR/PAR
------------------------	--------------------------------	--	--------------------------------	---------



ELEV	2	TDZE	-2		
CATEGORY	A	B	C	D	E
S-ILS 4 *	198-1/2		200	(200-1/2)	
S-LOC 4 **	380-1/2	382 (400-1/2)	380-5/8	382	(400-3/8)
CIRCLING ***	640-1	638 (700-1)	640-1 3/4 638 (700-1 3/4)	660-2 658 (700-2)	680-2 1/2 678 (700-2 1/2)

HIRL Rwy 04-22  
 HIRL Rwy 14-32  
 REIL all rwys  
 FAF to MAP 4.1 NM

Knots	60	90	120	150	180
Min:Sec	4:06	2:44	2:03	1:38	1:22

# ILS or LOC/DME RWY 4

SC-4, 11 JUN 2026 to 09 JUL 2026

SC-4, 11 JUN 2026 to 09 JUL 2026