

NEW ORLEANS, LOUISIANA

RNAV (GPS) RWY 14

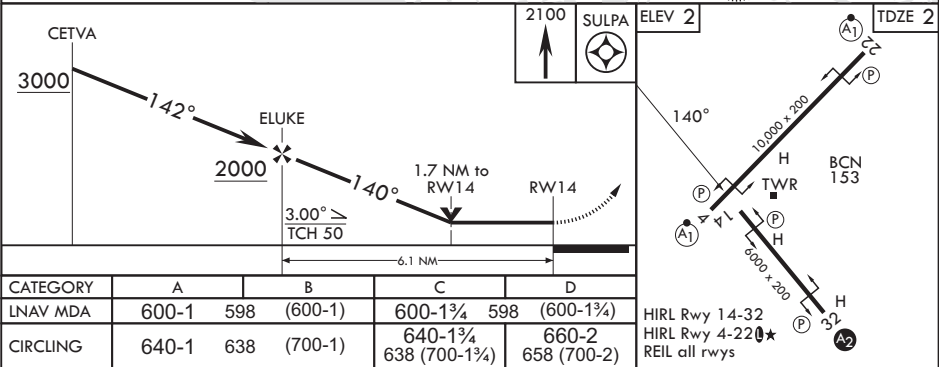
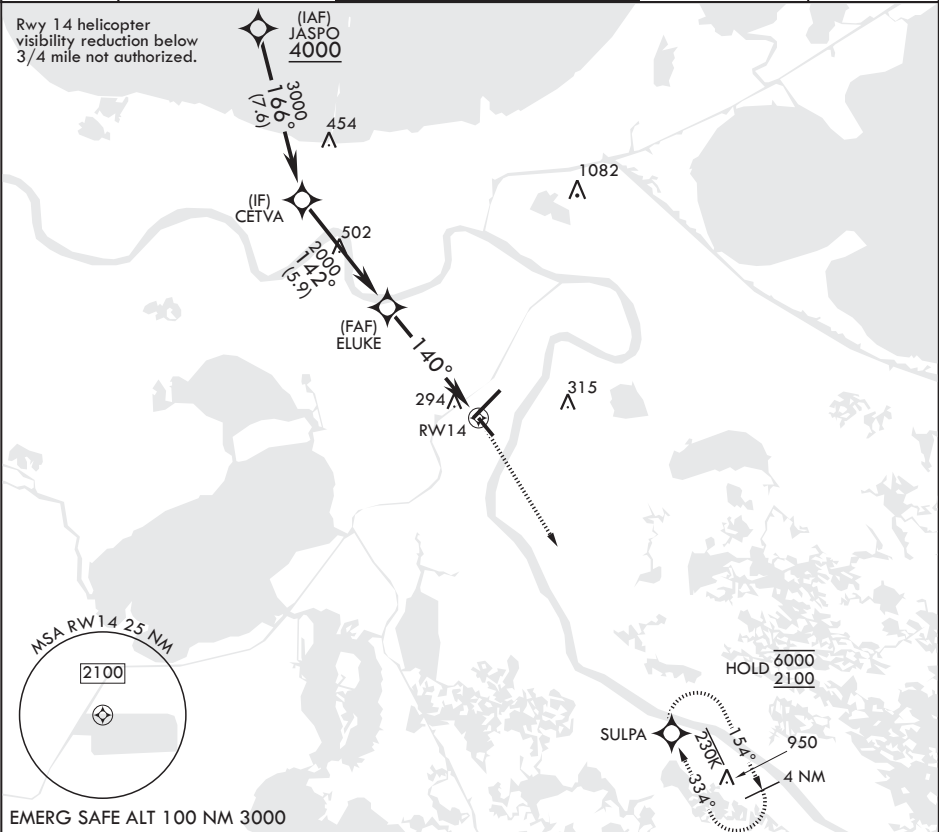
(USN)
NEW ORLEANS NAS JRB (ALVIN CALLENDER FLD) (KNBG)

APCH CRS	Rwy Idg	6000
140°	TDZE	2
	Arpt Elev	2

RNP APCH-GPS

MISSED APPROACH: Climbing right turn to 2100 direct SULPA and hold.

ATIS*	APP CON/DEP CON	NAVY NEW ORLEANS TOWER*	GND CON	ASR/PAR
279.55	123.85 256.9	123.8 0 340.2 (CTAF)	121.6 270.35	



NEW ORLEANS, LOUISIANA

29°50'N - 90°02'W NEW ORLEANS NAS JRB (ALVIN CALLENDER FLD) (KNBG)

Amdt 3 10JUL25

RNAV (GPS) RWY 14

SC-4, 11 JUN 2026 to 09 JUL 2026

SC-4, 11 JUN 2026 to 09 JUL 2026