

NEW ORLEANS, LOUISIANA

# RNAV (GPS) RWY 32

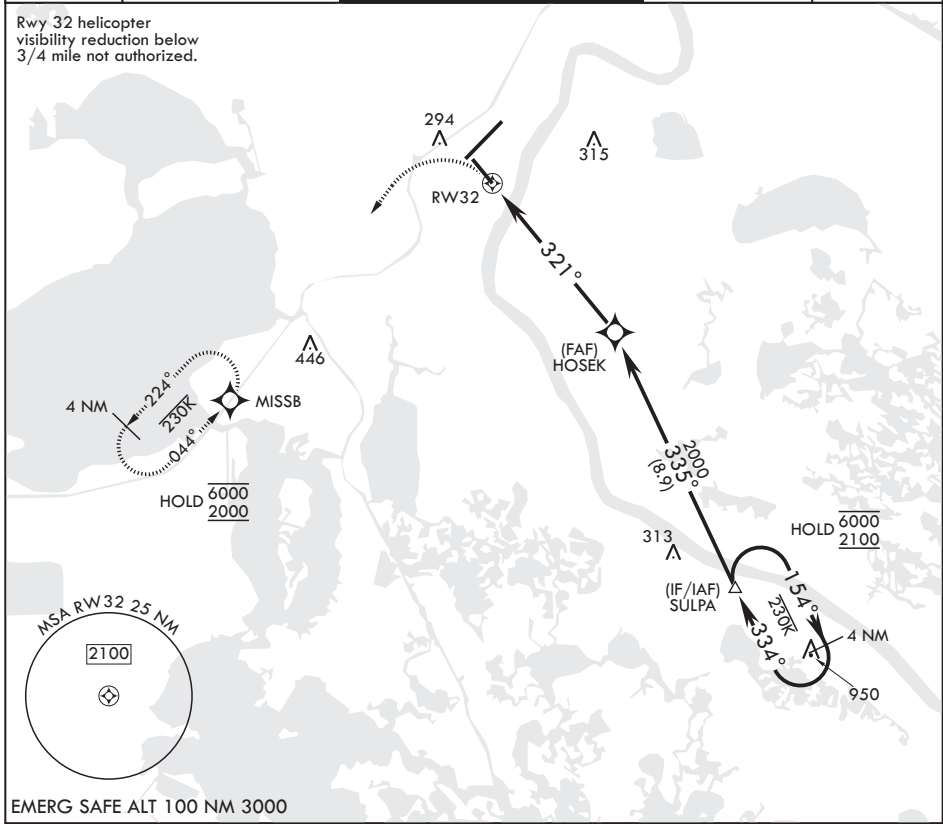
(USN)  
NEW ORLEANS NAS JRB (ALVIN CALLENDER FLD) (KNBG)

APCH CRS	Rwy Idg	6000
321°	TDZE	2
	Arprt Elev	2

RNP APCH-GPS	SALS	MISSED APPROACH: Climbing left turn to 2000 direct MISSB and hold.
▼ * When ALS inop, increase CAT AB vis to 1 mile; CAT CD vis to 1 3/8 miles.	A2	

ATIS * 279.55	APP CON/DEP CON 123.85 256.9	NAVY NEW ORLEANS TOWER * 123.8 0* 340.2 (CTAF)	GND CON 121.6 270.35	ASR/PAR
------------------	---------------------------------	---	-------------------------	---------

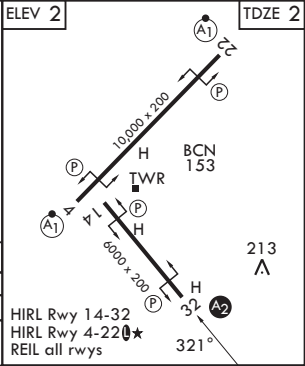
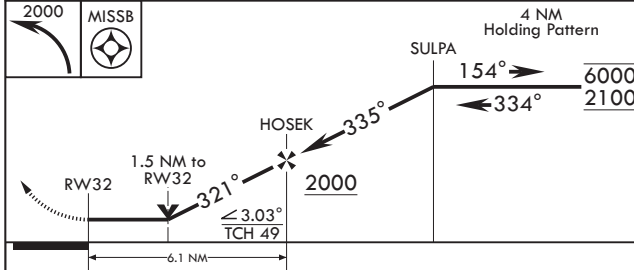
Rwy 32 helicopter visibility reduction below 3/4 mile not authorized.



SC-4, 11 JUN 2026 to 09 JUL 2026

SC-4, 11 JUN 2026 to 09 JUL 2026

EMERG SAFE ALT 100 NM 3000



CATEGORY	A	B	C	D
LNAV MDA*	520-3/4	518 (600-3/4)	520-1 1/4	518 (600-1 1/4)
CIRCLING	640-1	638 (700-1)	640-1 3/4 638 (700-1 3/4)	660-2 658 (700-2)

HIRL Rwy 14-32  
HIRL Rwy 4-220\*  
REIL all rwy's

NEW ORLEANS, LOUISIANA

29°50'N - 90°02'W NEW ORLEANS NAS JRB (ALVIN CALLENDER FLD) (KNBG)

Amdt 5 10JUL25

# RNAV (GPS) RWY 32