

NEW ORLEANS, LOUISIANA

# RNAV (GPS) RWY 4

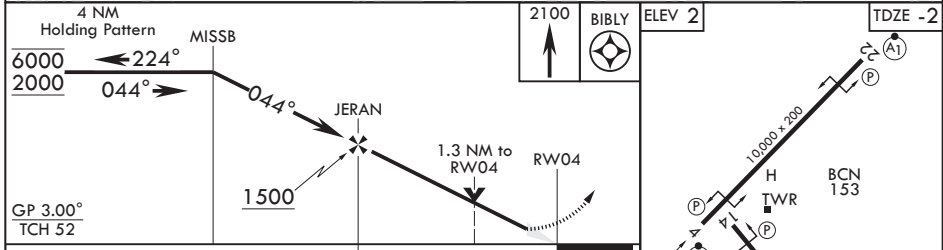
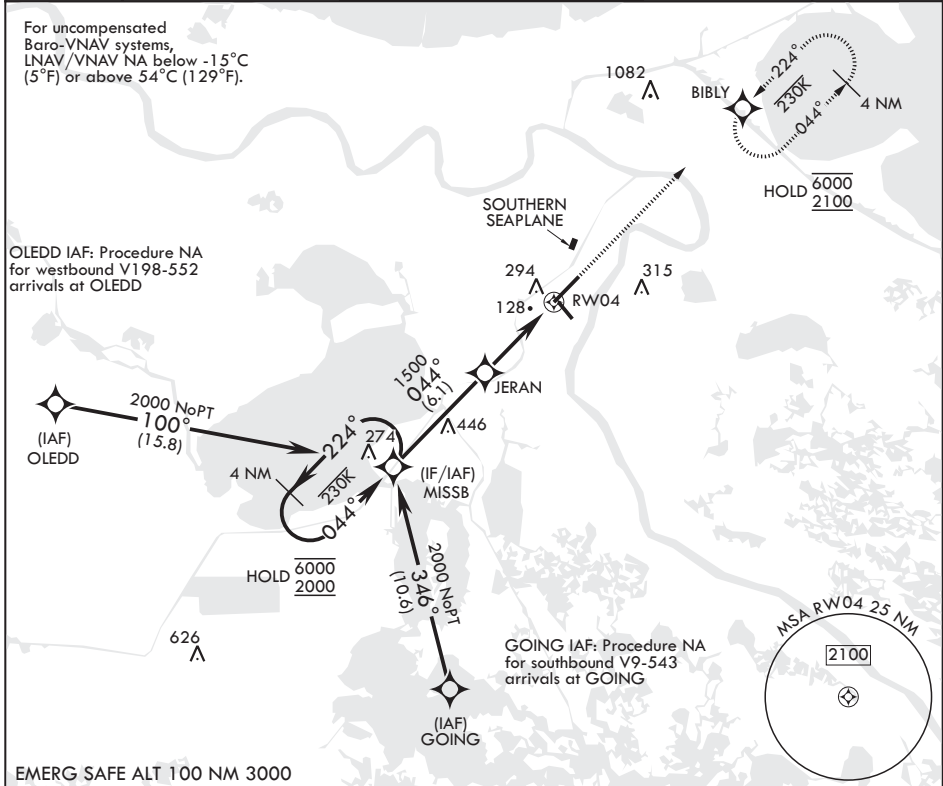
(USN)  
NEW ORLEANS NAS JRB (ALVIN CALLENDER FLD) (KNBG)

APCH CRS <b>044°</b>	Rwy ldg TDZE Arprt Elev	<b>10,000</b> <b>-2</b> <b>2</b>
-------------------------	-------------------------------	--

RNP APCH-GPS  
 \* When ALS inop, increase vis to 1 1/8 miles.  
 \*\* When ALS inop, increase CAT AB vis to 1 mile; CAT CD vis to 1 3/8 miles.

ALSF-1 MISSED APPROACH: Climb to 2100 direct BIBLY and hold.

ATIS* <b>279.55</b>	APP CON/DEP CON <b>123.85 256.9</b>	NAVY NEW ORLEANS TOWER* <b>123.8 340.2</b> (CTAF)	GND CON <b>121.6 270.35</b>	ASR/PAR
------------------------	--	--	--------------------------------	---------



CATEGORY	A	B	C	D
LNAV/VNAV DA*	410-3/4		412	(500-3/4)
LNAV MDA**	460-1/2	462 (500-1/2)	460-1	462 (500-1)
CIRCLING	640-1	638 (700-1)	640-1 3/4 638 (700-1 3/4)	660-2 658 (700-2)

HIRL Rwy 14-32  
HIRL Rwy 4-22  
REIL all rwys

NEW ORLEANS, LOUISIANA 29°50'N - 90°02'W NEW ORLEANS NAS JRB (ALVIN CALLENDER FLD) (KNBG)

Amdt 6 20MAR25

# RNAV (GPS) RWY 4

SC-4, 11 JUN 2026 to 09 JUL 2026

SC-4, 11 JUN 2026 to 09 JUL 2026