

LOC I-FSM 111.3	APP CRS 260°	Rwy Ldg TDZE Apt Elev	9318 448 469
---------------------------	------------------------	-----------------------------	---

ILS Z or LOC Z RWY 26

FORT SMITH RGNL (FSM)

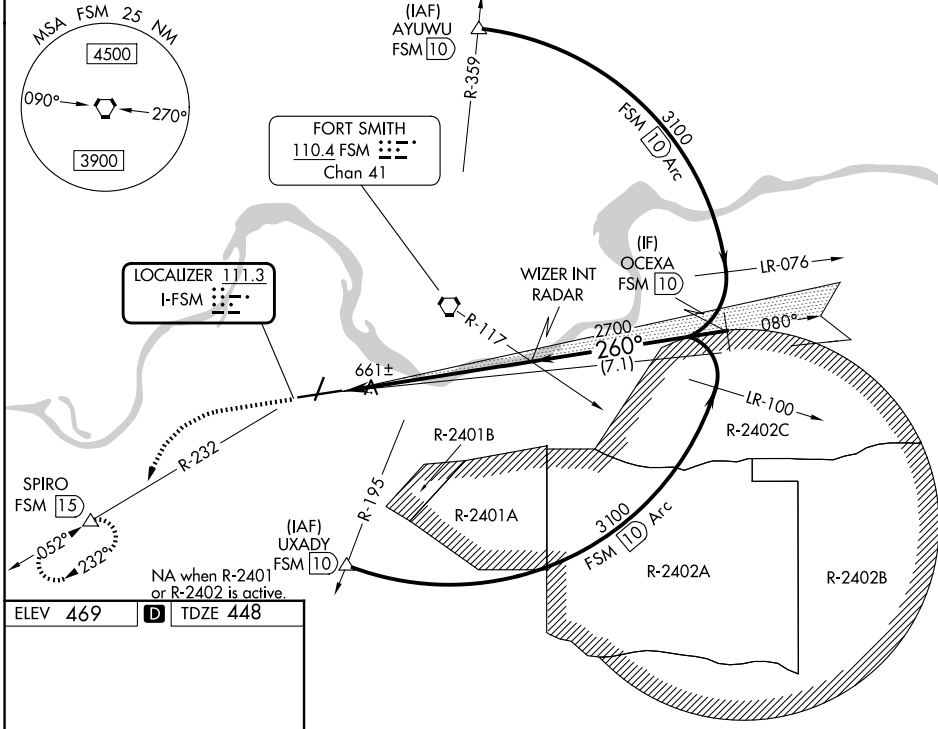
DME required.

⚠ Circling NA for Cat E when R-2401B active. Circling NA for Cat E northwest of Rwy 8 and 20. For inop ALS, increase S-ILS 26 Cat E visibility to RVR 4000 and S-LOC 26 Cat C/D/E to 1 1/2 SM. Circling Rwy 20, 26 NA at night.
ASR *RVR 1800 authorized with use of FD or AP or HUD to DA.

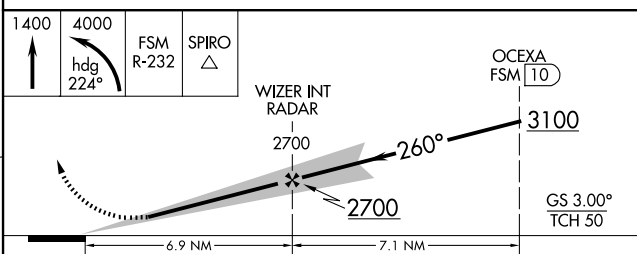
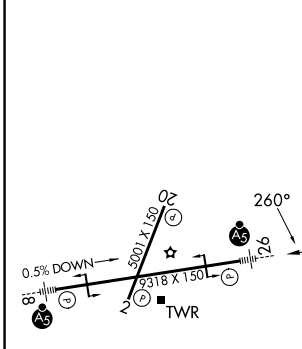


MISSED APPROACH: Climb to 1400 then climbing left turn to 4000 on heading 224° and FSM VORTAC R-232 to SPIRO/FSM 15 DME and hold, continue climb-in-hold to 4000.

ATIS 124.775	RAZORBACK APP CON * 120.9 343.75	FORT SMITH TOWER * 118.3 (CTAF) 0 323.175	GND CON 121.9 275.8	UNICOM 122.95
------------------------	--	---	-------------------------------	-------------------------



ELEV 469	D	TDZE 448
----------	----------	----------



HIRL Rwy 8-26 MIRL Rwy 2-20	FAF to MAP 6.9 NM				
Knots	60	90	120	150	180
Min:Sec	6:54	4:36	3:27	2:46	2:18
CATEGORY	A	B	C	D	E
S-ILS 26 *	648/24 200 (200-1/2)				
S-LOC 26	960/24	512 (500-1/2)	960/55	512 (500-1)	
CIRCLING	1140-1	671 (700-1)	1400-2 3/4 931 (1000-2 3/4)	1400-3	931 (1000-3)

SC-1, 11 JUN 2026 to 09 JUL 2026

SC-1, 11 JUN 2026 to 09 JUL 2026