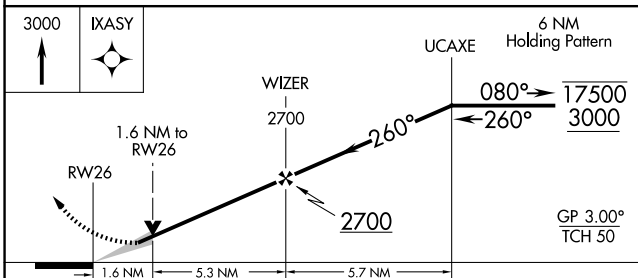
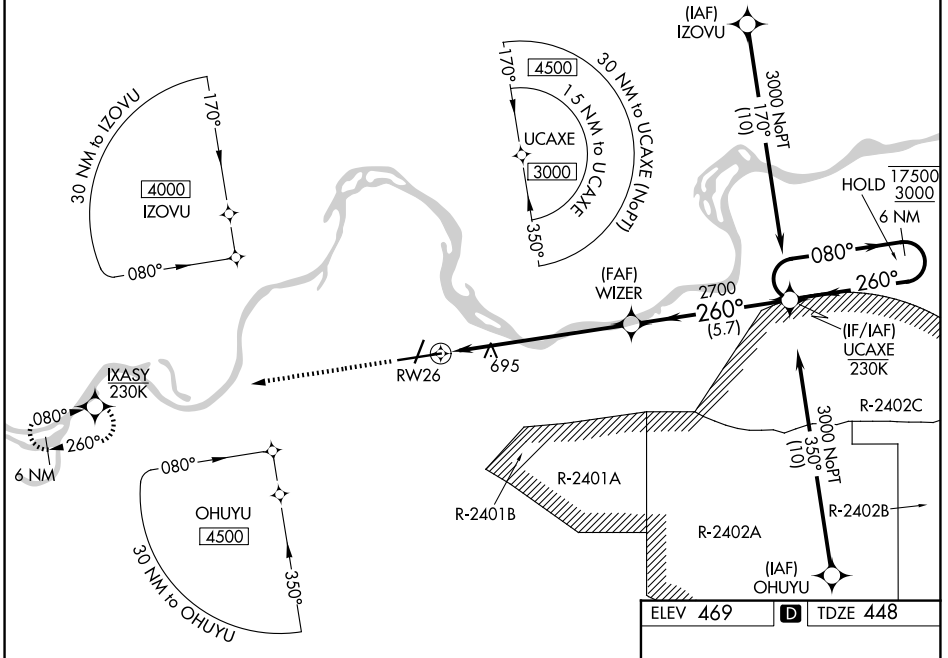


WAAS CH 87117 W26A	APP CRS 260°	Rwy Ldg TDZE Apt Elev	9318 448 469
--	------------------------	-----------------------------	---

RNAV (GPS) RWY 26

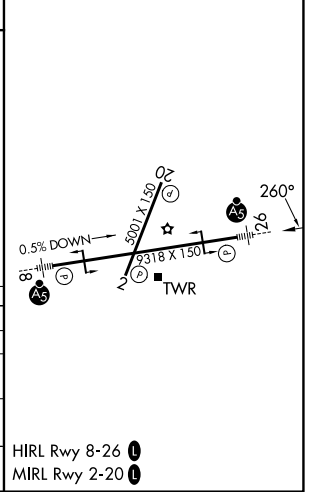
FORT SMITH RGNL (F'SM)

RNP APCH - GPS.		<p>▽ Circling NA for Cat E northwest of Rwy 8 and 20. Circling Rwy 20, 26 NA at night. For uncompensated Baro-VNAV systems, LNAV/VNAV NA below -11°C or above 54°C. Circling NA for Cat E NA when R-2401B active. For inop ALS, increase LPV Cat E visibility to RVR 4000, LNAV/VNAV all Cats visibility to 1 3/8 SM, and LNAV Cat E visibility to 1 3/8 SM. *RVR 1800 authorized with use of FD or AP or HUD to DA.</p>		<p>MALSRL</p>	<p>MISSED APPROACH: Climb to 3000 direct IXASY and hold.</p>
ATIS 124.775	RAZORBACK APP CON * 120.9 343.75	FORT SMITH TOWER * 118.3(CTAF) 323.175	GND CON 121.9 275.8	UNICOM 122.95	



ELEV 469	D	TDZE 448
----------	----------	----------

CATEGORY	A	B	C	D	E
LPV DA *	648/24		200 (200-1/2)		
LNAV/VNAV DA	962/55		514 (500-1)		
LNAV MDA	1000/24 552 (600-1/2)		1000/60		552 (600-1 1/4)
CIRCLING	1140-1 671 (700-1)		1400-2 3/4 931 (1000-2 3/4)		1400-3 931 (1000-3)



SC-1, 11 JUN 2026 to 09 JUL 2026

SC-1, 11 JUN 2026 to 09 JUL 2026