

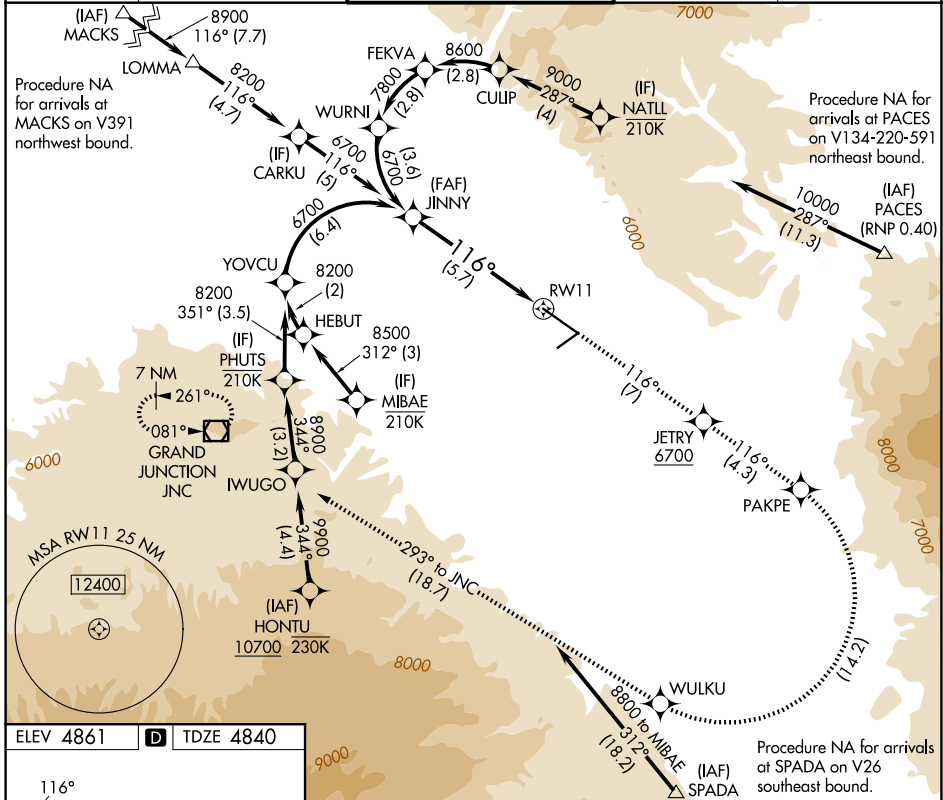
APP CRS <b>116°</b>	Rwy Ldg TDZE Apt Elev	<b>9339</b> <b>4840</b> <b>4861</b>
------------------------	-----------------------------	---

# RNAV (RNP) Z RWY 11

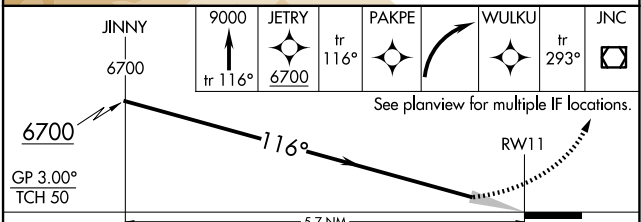
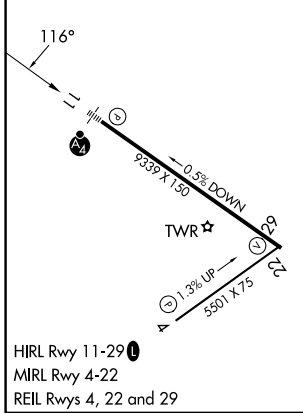
GRAND JUNCTION RGNL (GJT)

RNP AR APCH - GPS.	MALSF	MISSED APPROACH: Climb to 9000 on track 116° to JETRY, cross JETRY at or above 6700, and track 116° to PAKPE, right turn to WULKU, and track 293° to JNC VOR/DME and hold.
▼ For uncompensated Baro-VNAV systems, procedure NA below -17°C or above 54°C. For inoperative ALS, increase RNP 0.30 all Cats visibility to 1½ SM.		

ATIS <b>118.55</b>	DENVER APP CON * <b>119.7 317.4</b>	GRAND JUNCTION TOWER * <b>118.1 (CTAF) 257.8</b>	GND CON <b>121.7 257.8</b>	UNICOM <b>122.95</b>
-----------------------	--	---	-------------------------------	-------------------------



ELEV 4861	<b>D</b>	TDZE 4840
-----------	----------	-----------



GP 3.00° TCH 50	A	B	C	D
RNP 0.10 DA		5183/40	343 (400-¾)	
RNP 0.30 DA		5346-1¼	506 (500-1¼)	

**AUTHORIZATION REQUIRED**

SW-1, 11 JUN 2026 to 09 JUL 2026

SW-1, 11 JUN 2026 to 09 JUL 2026