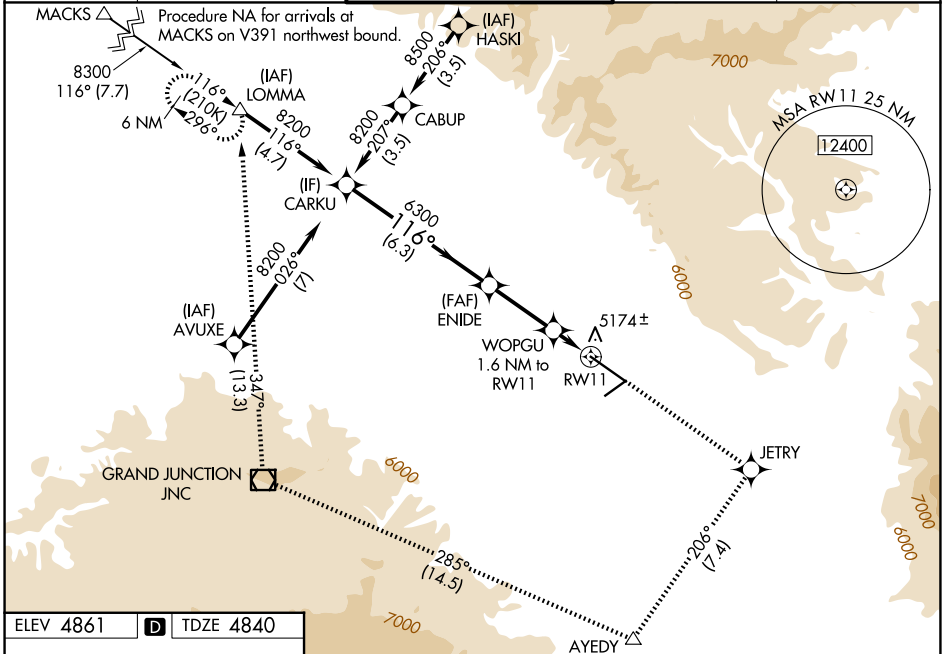


WAAS CH 97514 W11A	APP CRS 116°	Rwy Ldg TDZE Apt Elev	9339 4840 4861
--	------------------------	-----------------------------	---

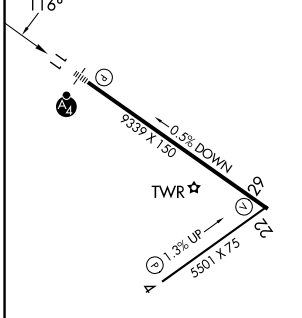
RNAV (GPS) Y RWY 11

GRAND JUNCTION RGNL (GJT)

RNP APCH - GPS.		MALSF		MISSED APPROACH: Climb to 6700 direct JETRY then climbing right turn to 9000 on track 206° to AYEDY and track 285° to JNC VOR/DME and track 347° to LOMMA and hold. *Missed approach requires minimum climb of 206 feet per NM to 7740.	
⚠ Circling NA for Cat D north of Rwy 11-29. For uncompensated Baro-VNAV systems, LNAV/VNAV NA below -17°C or above 54°C. For inop ALS, increase LPV all Cats visibility to RVR 4500 and increase LNAV Cat C/D visibility to 1 $\frac{1}{2}$. Inop table does not apply to LPV*.					
ATIS 118.55	DENVER APP CON * 119.7 317.4	GRAND JUNCTION TOWER * 118.1 (CTAF) 0 257.8	GND CON 121.7 257.8	UNICOM 122.95	



ELEV 4861	D	TDZE 4840
-----------	----------	-----------



	CARKU	6700	JETRY	9000	AYEDY	JNC	LOMMA
	↑	◆	↷	△	tr 285°	□	tr 347°
	8200	6300	5400				
	116°		206°				
	6.3 NM		2.8 NM		1.6 NM		
GP 3.00°	TCH 51						
CATEGORY	A	B	C	D			
LPV DA*	5040/40		200 (200- $\frac{3}{4}$)				
LPV DA	5120/40		280 (300- $\frac{3}{4}$)				
LNAV/VNAV DA	5317/60		477 (500-1 $\frac{1}{4}$)				
LNAV MDA*	5280/40	440 (500- $\frac{3}{4}$)	5280/50	440 (500-1)			
LNAV MDA	5360/40	520 (500- $\frac{3}{4}$)	5360-1 $\frac{1}{4}$	520 (500-1 $\frac{1}{4}$)			
CIRCLING	5380-1	5520-1	5840-3	979 (1000-3)			
	519 (600-1)	659 (700-1)					

HIRL Rwy 11-29
MIRL Rwy 4-22
REIL Rwy 4, 22 and 29

SW-1, 11 JUN 2026 to 09 JUL 2026

SW-1, 11 JUN 2026 to 09 JUL 2026