

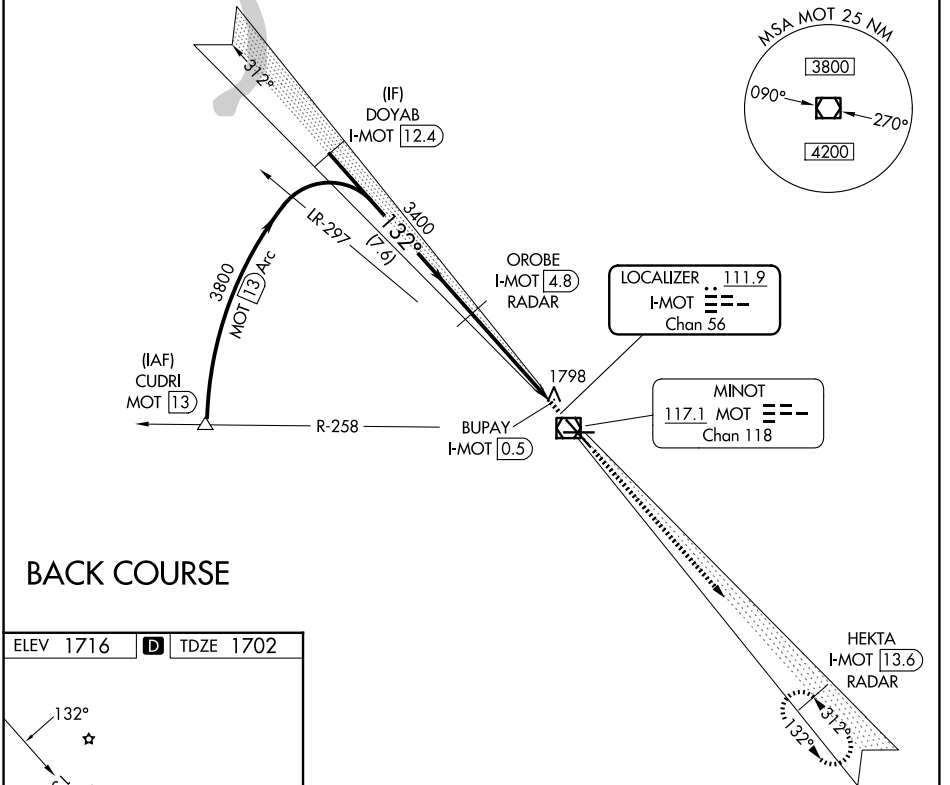
LOC/DME I-MOT 111.9 Chan 56	APP CRS 132°	Rwy Ldg TDZE Apt Elev	7700 1702 1716
---	------------------------	-----------------------------	---

LOC BC RWY 13

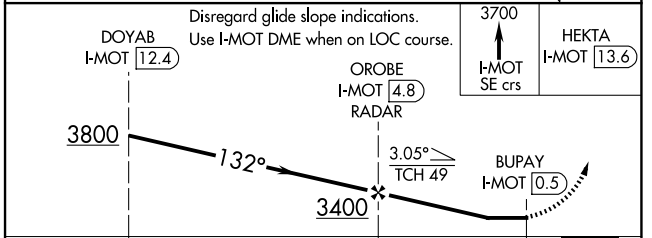
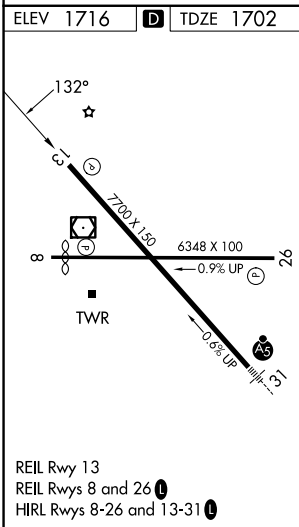
MINOT INTL (MOT)

DME required		MISSED APPROACH: Climb to 3700 on I-MOT SE course to HEKTA/I-MOT 13.6 DME/RADAR and hold.		
--------------	--	--	--	--

ASOS 118.725	MINOT APP CON ★ 119.6 363.8	MAGIC CITY TOWER ★ 118.2 (CTAF) 0 251.125	GND CON 121.9	UNICOM 122.95
------------------------	---------------------------------------	---	-------------------------	-------------------------



BACK COURSE



CATEGORY	A	B	C	D
S-LOC13	2060-1		358 (400-1)	
CIRCLING	2200-1 484 (500-1)	2240-1 524 (600-1)	2800-3 1084 (1100-3)	

NC-1, 11 JUN 2026 to 09 JUL 2026

NC-1, 11 JUN 2026 to 09 JUL 2026