

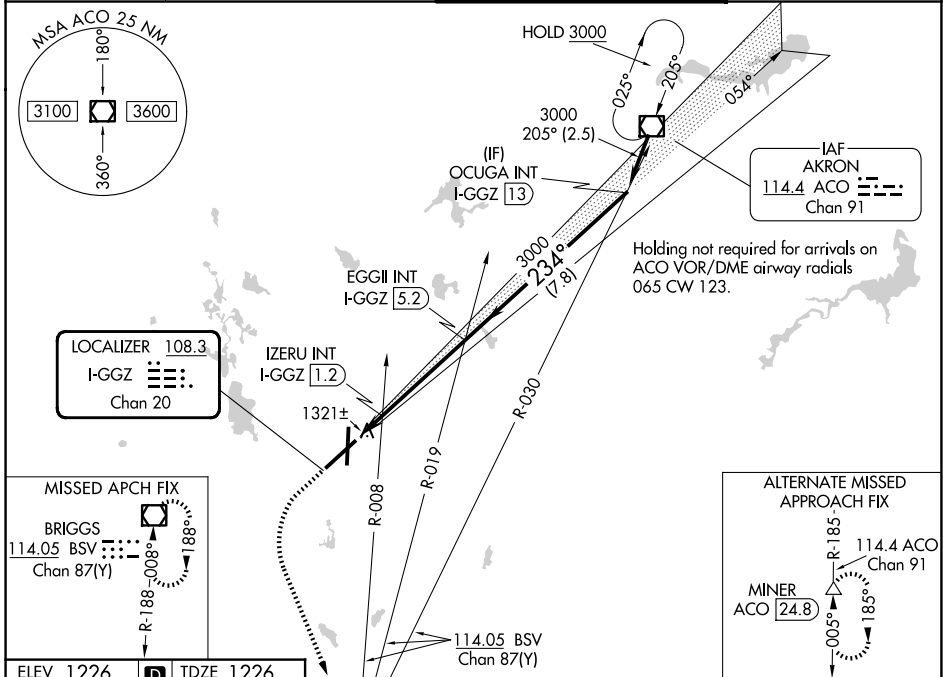
LOC/DME I-GGZ 108.3 Chan 20	APP CRS 234°	Rwy Ldg TDZE Apt Elev	8204 1226 1226
--	------------------------	-----------------------------	---

ILS or LOC RWY 23

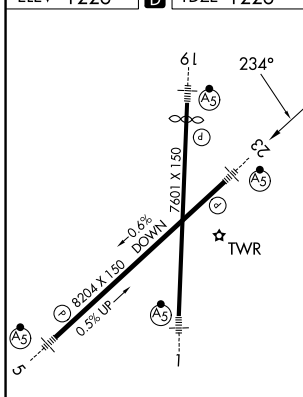
AKRON-CANTON RGNL (CAK)

<p>V **RVR 1800 authorized with use of FD or AP or HUD to DA.</p>	<p>MALSR </p>	<p>MISSED APPROACH: Climb to 2500 then climbing left turn to 3000 direct BSV VOR/DME and hold.</p>
--	-------------------	--

<p>ATIS 121.05</p>	<p>CLEVELAND APP CON* 125.5 269.25</p>	<p>AKRON-CANTON TOWER 134.75 279.575</p>	<p>GND CON 121.7 348.6</p>
-------------------------------	---	---	---------------------------------------



ELEV 1226	D	TDZE 1226
-----------	----------	-----------



	A	B	C	D
S-ILS 23	**1426/24 200 (200-½)			
S-LOC 23	1700/24	474 (500-½)	1700/50 474 (500-1)	
CIRCLING	1760-1	534 (600-1)	1780-1½ 554 (600-1½)	1800-2 574 (600-2)
IZERU FIX MINIMUMS				
S-LOC 23	1580/24 354 (400-½)		1580/40 354 (400-¾)	
CIRCLING	1760-1	534 (600-1)	1780-1½ 554 (600-1½)	1800-2 574 (600-2)

HIRL Rwy 1-19 and 5-23

FAF to MAP 5.4 NM

Knots	60	90	120	150	180
Min:Sec	5:24	3:36	2:42	2:10	1:48

EC-2, 11 JUN 2026 to 09 JUL 2026

EC-2, 11 JUN 2026 to 09 JUL 2026