

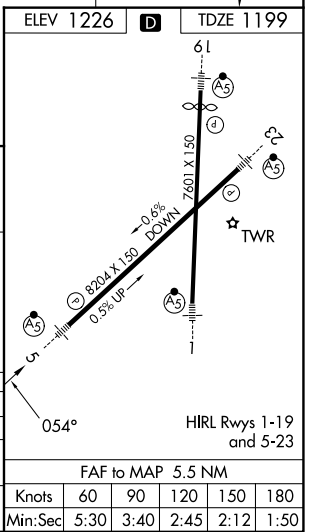
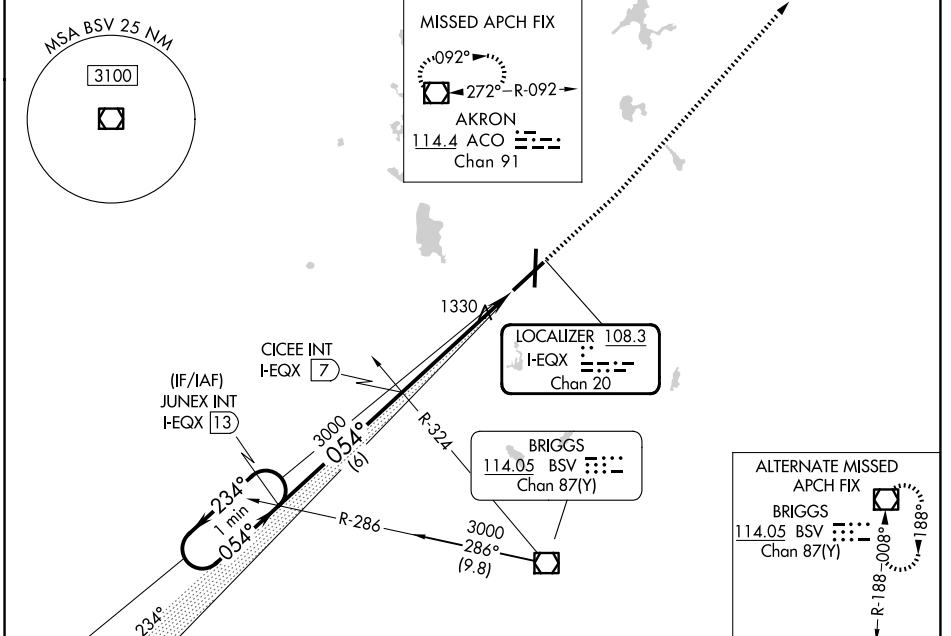
LOC/DME I-EQX 108.3 Chan 20	APP CRS 054°	Rwy Ldg TDZE Apt Elev	8204 1199 1226
---	------------------------	-----------------------------	---

ILS or LOC RWY 5

AKRON-CANTON RGNL (CAK)

▽ **RVR 1800 authorized with use of FD or AP or HUD to DA.	MALSR 	MISSED APPROACH: Climb to 2000 then climbing left turn to 3000 direct ACO VOR/DME and hold.
---	-----------	---

ATIS 121.05	CLEVELAND APP CON* 125.5 269.25	AKRON-CANTON TOWER 134.75 279.575	GND CON 121.7 348.6
-----------------------	---	---	-------------------------------



One minute holding pattern	JUNEX INT I-EQX 13	CICEE INT I-EQX 7	2000	3000	ACO
3000	← 234°	→ 054°	3000		*LOC only
GS 3.00° TCH 50		3000			*I-EQX 2.8
					I-EQX 1.5
		6 NM	4.2 NM	1.3	

CATEGORY	A	B	C	D
S-ILS 5	**1399/24 200 (200-½)			
S-LOC 5	1640/24	441 (500-½)	1640/45	441 (500-¾)
CIRCLING	1760-1	534 (600-1)	1780-1½ 554 (600-1½)	1800-2 574 (600-2)

FAF to MAP 5.5 NM					
Knots	60	90	120	150	180
Min:Sec	5:30	3:40	2:45	2:12	1:50

EC-2, 11 JUN 2026 to 09 JUL 2026

EC-2, 11 JUN 2026 to 09 JUL 2026