

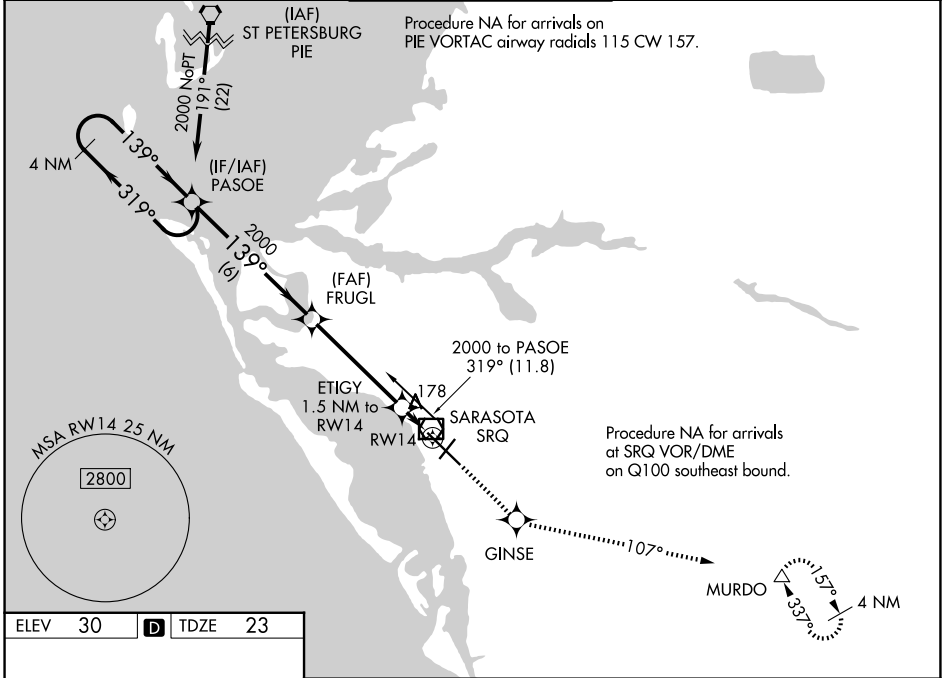
WAAS CH 86705 W 14A	APP CRS 139°	Rwy Ldg 7540 TDZE 23 Apt Elev 30
---	------------------------	---

RNAV (GPS) RWY 14

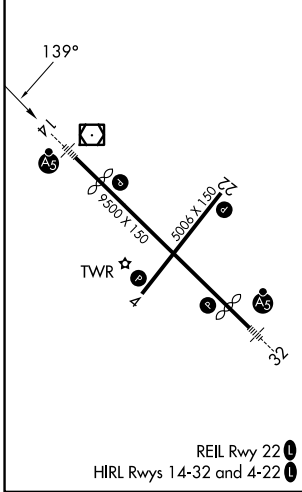
SARASOTA/BRADENTON INTL (SRQ)

RNP APCH.		MALSR	MISSED APPROACH: Climb to 3000 direct GINSE and on track 107° to MURDO and hold.
<p>▼ For uncompensated Baro-VNAV systems, LNAV/VNAV NA below -15°C or above 43°C. When control tower closed, LPV and LNAV/VNAV NA; increase LNAV all Cats visibility to 1 mile. When control tower closed, inop table does not apply to LNAV Cats A and B. When control tower closed, for inop MALSR, increase LNAV Cats C and D visibility to 1½ mile.</p>			

ATIS 124.375	TAMPA APP CON 119.65 353.575	SARASOTA TOWER ★ 120.1(CTAF) 256.8	GND CON 121.9 273.6	UNICOM 122.95
------------------------	--	--	-------------------------------	-------------------------



ELEV 30	D	TDZE 23
---------	----------	---------



4 NM Holding Pattern	PASOE	FRUGL	3000	GINSE	tr 107°	MURDO
2000	← 319°	→ 139°	2000	ETIGY 1.5 NM to RW14	*LNAV only.	
GP 3.00°			*560	RW14		
TCH 54	6 NM	4.5 NM	1.5 NM			
CATEGORY	A	B	C	D		
LPV DA	223-½		200 (200-½)			
LNAV/VNAV DA	489-1⅛		466 (500-1⅛)			
LNAV MDA	440-½	417 (500-½)	440-¾	417 (500-¾)		
CIRCLING	500-1	470 (500-1)	600-1½	570 (600-1½)	600-2	570 (600-2)

SE-3, 11 JUN 2026 to 09 JUL 2026

SE-3, 11 JUN 2026 to 09 JUL 2026