

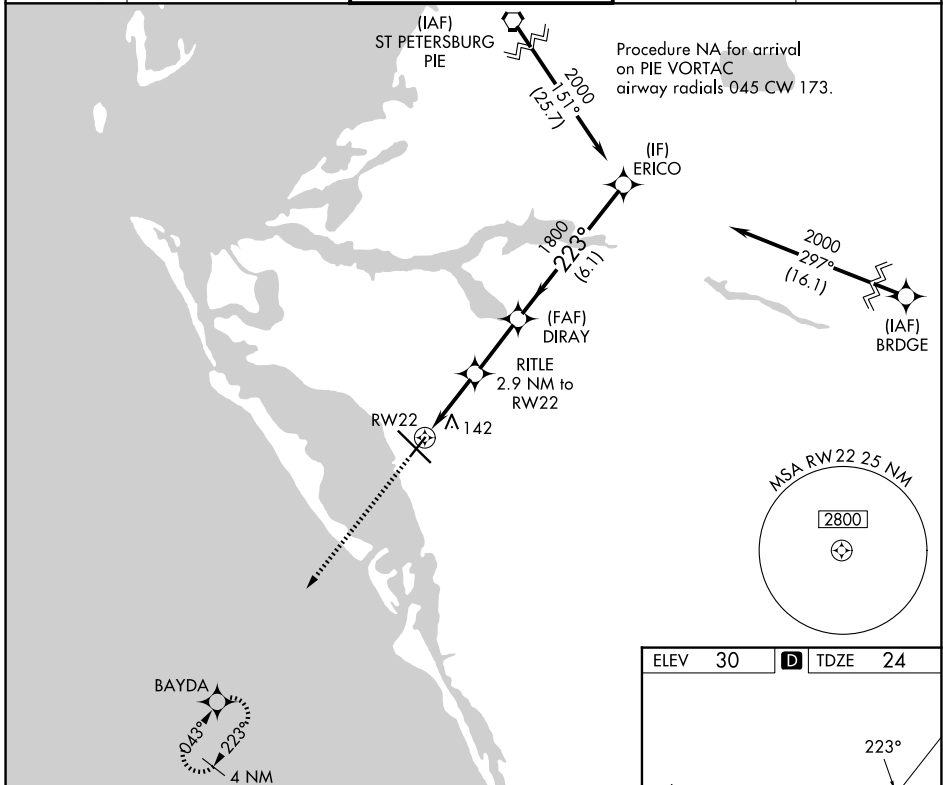
APP CRS 223°	Rwy Ldg 5006
	TDZE 24
	Apt Elev 30

RNAV (GPS) RWY 22

SARASOTA/BRADENTON INTL (SRQ)

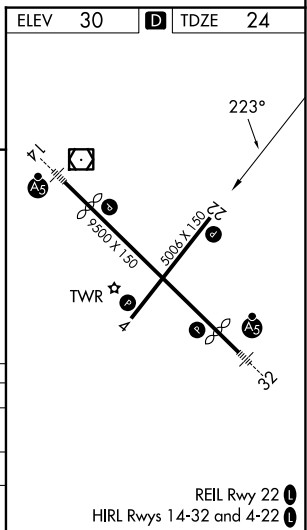
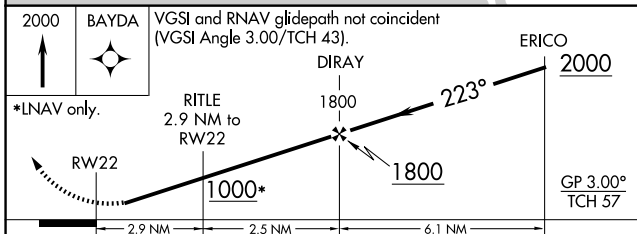
RNP APCH. ▼ Rwy 22 helicopter visibility reduction below 1 SM NA. For uncompensated Baro-VNAV systems, LNAV/VNAV NA below -1.5°C or above 43°C.	MISSED APPROACH: Climb to 2000 direct BAYDA and hold.
--	---

ATIS 124.375	TAMPA APP CON 119.65 353.575	SARASOTA TOWER ★ 120.1(CTAF) 256.8	GND CON 121.9 273.6	UNICOM 122.95
------------------------	--	--	-------------------------------	-------------------------



SE-3, 11 JUN 2026 to 09 JUL 2026

SE-3, 11 JUN 2026 to 09 JUL 2026



CATEGORY	A	B	C	D
LNAV/VNAV DA		303-1	279 (300-1)	
LNAV MDA		400-1	376 (400-1)	
CIRCLING	500-1	470 (500-1)	600-1½ 570 (600-1½)	600-2 570 (600-2)