

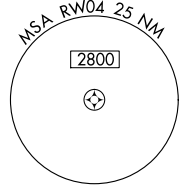
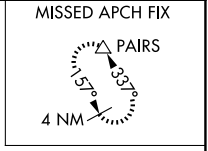
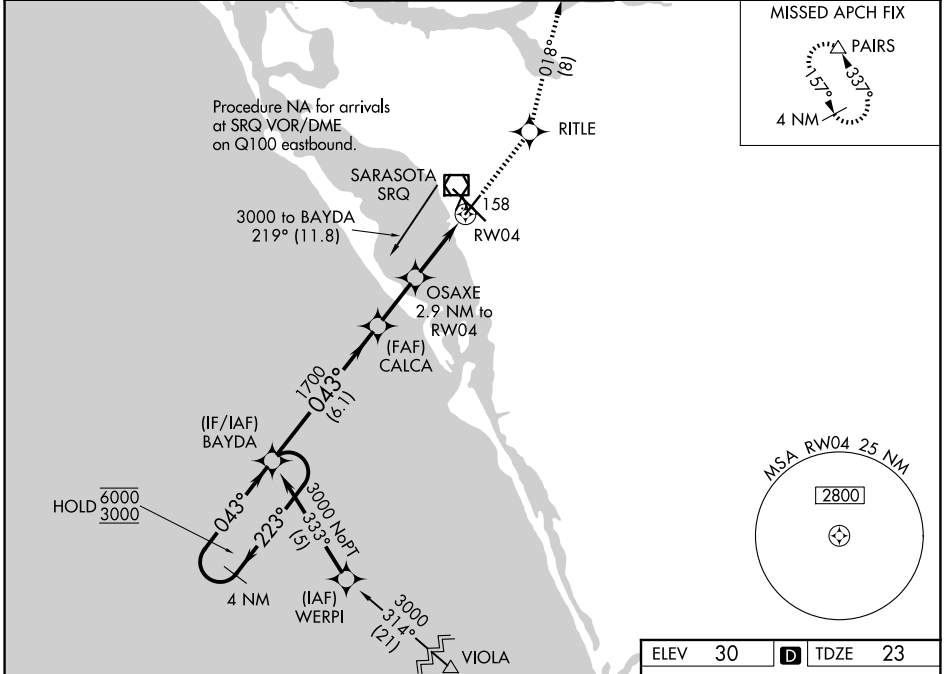
WAAS CH 99420 W04A	APP CRS 043°	Rwy Ldg 5006 TDZE 23 Apt Elev 30
--	------------------------	---

RNAV (GPS) RWY 4

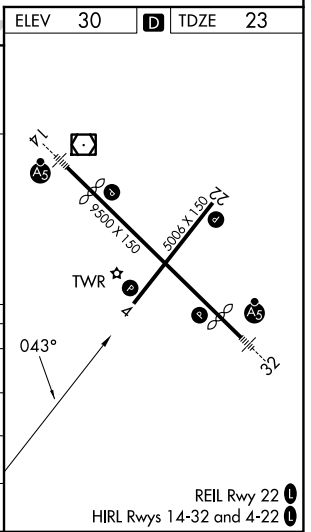
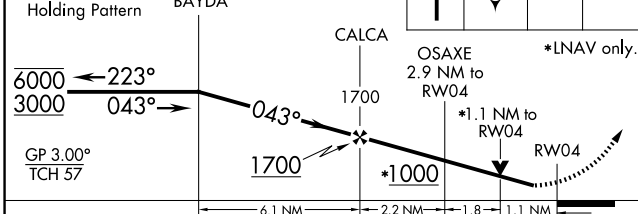
SARASOTA/BRADENTON INTL (SRQ)

RNP APCH.
 ▼ Rwy 4 helicopter visibility reduction below 3/4 SM NA. For uncompensated Baro-VNAV systems, LNAV/VNAV NA below -15°C or above 43°C.
 MISSED APPROACH: Climb to 3000 direct RITL and on track 018° to PAIRS and hold, continue climb-in-hold to 3000.

ATIS 124.375	TAMPA APP CON 119.65 353.575	SARASOTA TOWER ★ 120.1 (CTAF) 256.8	GND CON 121.9 273.6	UNICOM 122.95
------------------------	--	---	-------------------------------	-------------------------



VGSI and RNAV glidepath not coincident (VGSI Angle 3.00/TCH 46).
 4 NM Holding Pattern BAYDA
 RITL tr 018° PAIRS



CATEGORY	A	B	C	D
LPV DA		317-1	294 (300-1)	
LNAV/VNAV DA		319-1	296 (300-1)	
LNAV MDA	420-1	397 (400-1)	420-1 1/8	397 (400-1 1/8)
CIRCLING	500-1	470 (500-1)	600-1 1/2	600-2
			570 (600-1 1/2)	570 (600-2)

SE-3, 11 JUN 2026 to 09 JUL 2026

SE-3, 11 JUN 2026 to 09 JUL 2026