


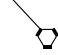
(SRQ6.SRQ) 25107

AL-640 (FAA)

# SARASOTA SIX DEPARTURE

SARASOTA/BRADENTON INTL (SRQ)  
SARASOTA (BRADENTON), FLORIDA

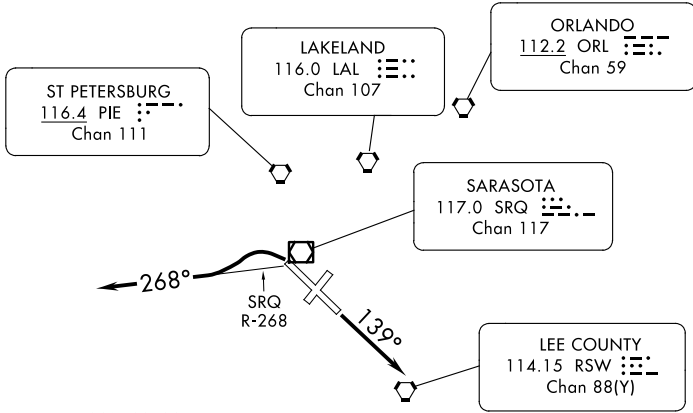
SEMINOLE  
117.5 SZW   
Chan 122



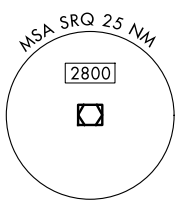
**TOP ALTITUDE:  
3000**

RADAR required.

TAMPA DEP CON  
119.65 353.575  
ATIS  
124.375  
CLNC DEL  
118.25  
GND CON  
121.9 273.6  
SARASOTA TOWER ★  
120.1 (CTAF) 256.8



TAKEOFF MINIMUMS  
Rwys 4, 22: NA-ATC.  
Rwy 14: Standard.  
Rwy 32: Standard with ATC climb of 500'/NM to 540.



NOTE: Rwy 32, Turbojet aircraft do not turn prior to departure end of Rwy.

NOTE: Chart not scale.



## DEPARTURE ROUTE DESCRIPTION

TAKEOFF RUNWAY 14: Climb heading 139°. Expect RADAR vectors to join assigned route, thence. . . .

TAKEOFF RUNWAY 32: Climbing left turn to intercept SRQ R-268 westbound or as assigned by ATC. Expect RADAR vectors to join assigned route, thence. . . .

. . . .maintain 3000 or as assigned by ATC. Expect clearance to filed altitude ten minutes after departure.

# SARASOTA SIX DEPARTURE

(SRQ6.SRQ) 17APR25

SARASOTA (BRADENTON), FLORIDA  
SARASOTA/BRADENTON INTL (SRQ)

SE-3, 11 JUN 2026 to 09 JUL 2026

SE-3, 11 JUN 2026 to 09 JUL 2026