

SAGINAW, MICHIGAN

AL-648 (FAA)

26078

LOC/DME I-TQR 108.7 Chan 24	APP CRS 233°	Rwy Ldg 8002 TDZE 661 Apt Elev 668
--	------------------------	---

ILS or LOC RWY 23

MBS INTL (MBS)

DME or RADAR required. RADAR required for procedure entry.

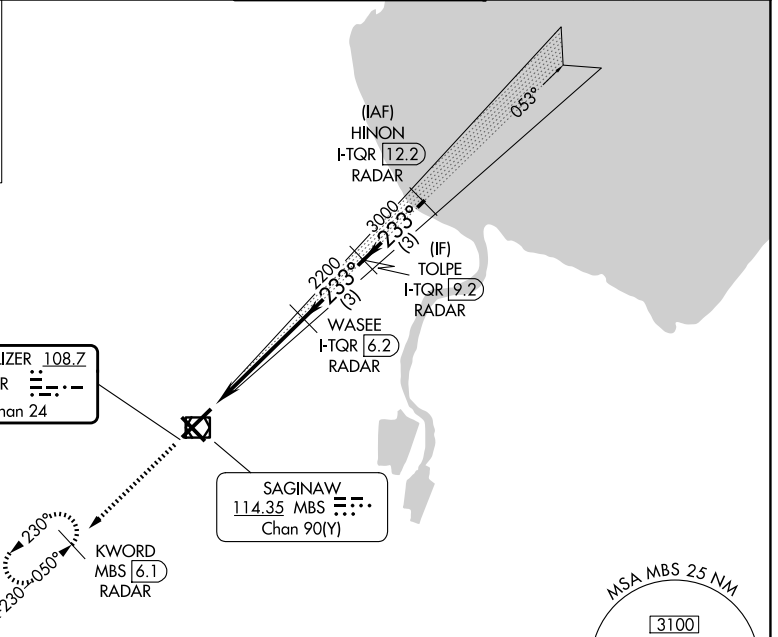
*RVR 1800 authorized with use of FD or AP or HUD to DA.

MALS R

MISSED APPROACH: Climb to 2500 on MBS VOR/DME R-230 to KWORD/MBS 6.1 DME/RADAR and hold.

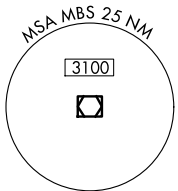
ATIS 125.925	GREAT LAKES APP CON* 126.45 235.625	SAGINAW TOWER* 120.1 (CTAF) 257.7	GND CON 121.7	UNICOM 122.95
------------------------	---	---	-------------------------	-------------------------

ALT MISSED APCH FIX
WERDO
4 NM

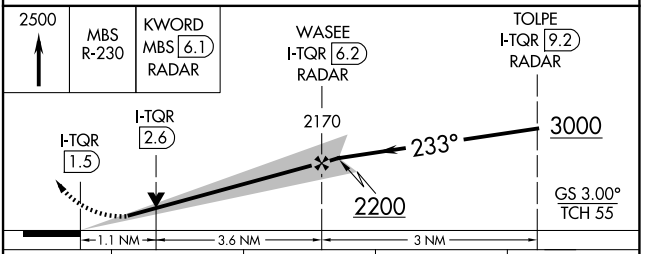
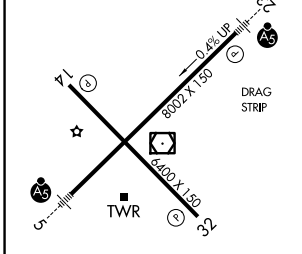


LOCALIZER **108.7**
I-TQR
Chan 24

SAGINAW
114.35 MBS
Chan 90(Y)



ELEV 668	D	TDZE 661
-----------------	----------	-----------------



REIL Rwy 14 and 32					
HIRL Rwy 5-23 and 14-32					
FAF to MAP 4.7 NM					
Knots	60	90	120	150	180
Min:Sec	4:42	3:08	2:21	1:53	1:34
CATEGORY	A	B	C	D	
S-ILS 23 *	861/24 200 (200-1/2)				
S-LOC 23	1060/24 399 (400-1/2)	1060/35 399 (400-5/8)			
CIRCLING	1080-1 412 (500-1)	1120-1 452 (500-1)	1240-1 1/2 572 (600-1/2)	1240-2 572 (600-2)	

SAGINAW, MICHIGAN
Amdt 5A 25JAN24

43°32'N-84°05'W

MBS INTL (MBS) ILS or LOC RWY 23

EC-1, 11 JUN 2026 to 09 JUL 2026

EC-1, 11 JUN 2026 to 09 JUL 2026