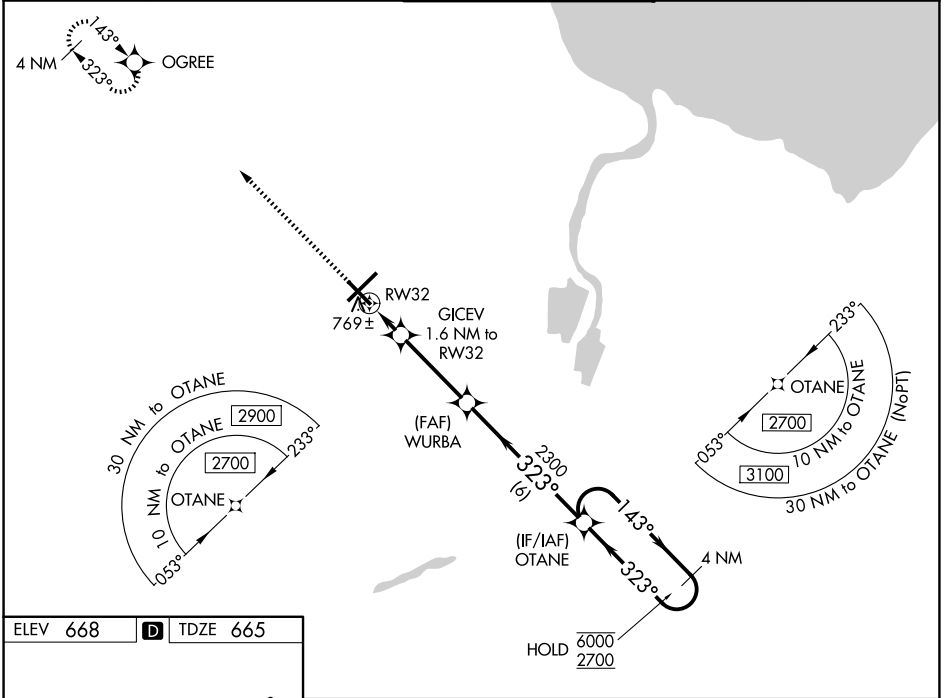


WAAS CH <b>78011</b> <b>W32A</b>	APP CRS <b>323°</b>	Rwy Ldg TDZE Apt Elev	<b>6400</b> <b>665</b> <b>668</b>
--	------------------------	-----------------------------	---

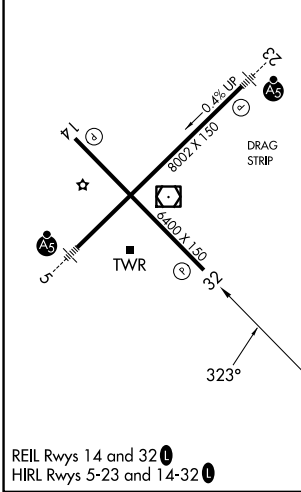
# RNAV (GPS) RWY 32

MBS INTL (MBS)

RNP APCH.		MISSED APPROACH: Climb to 2300 direct OGREE and hold.		
<p>▼ For uncompensated Baro-VNAV systems, LNAV/VNAV NA below -18°C or above 54°C.</p>				
ATIS <b>125.925</b>	GREAT LAKES APP CON★ <b>126.45 235.625</b>	SAGINAW TOWER★ <b>120.1 (CTAF) 0 257.7</b>	GND CON <b>121.7</b>	UNICOM <b>122.95</b>



ELEV 668	<b>D</b>	TDZE 665
----------	----------	----------



2300	OGREE	4 NM Holding Pattern			
*LNAV only.					
CATEGORY	A	B	C	D	
LPV DA		865- <sup>3</sup> / <sub>4</sub>	200 (200- <sup>3</sup> / <sub>4</sub> )		
LNAV/VNAV DA		950- <sup>7</sup> / <sub>8</sub>	285 (300- <sup>7</sup> / <sub>8</sub> )		
LNAV MDA		1020-1	355 (400-1)		
CIRCLING	1080-1 412 (500-1)	1120-1 452 (500-1)	1240-1½ 572 (600-1½)	1240-2 572 (600-2)	

EC-1, 11 JUN 2026 to 09 JUL 2026

EC-1, 11 JUN 2026 to 09 JUL 2026