

WAAS CH <b>58240</b> <b>W21A</b>	APP CRS <b>213°</b>	Rwy Idg TDZE <b>1194</b> Apt Elev <b>1194</b>	<b>5002</b> <b>1194</b> <b>1194</b>
--	------------------------	---	---

# RNAV (GPS) RWY 21

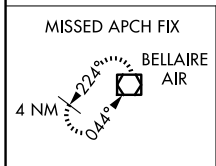
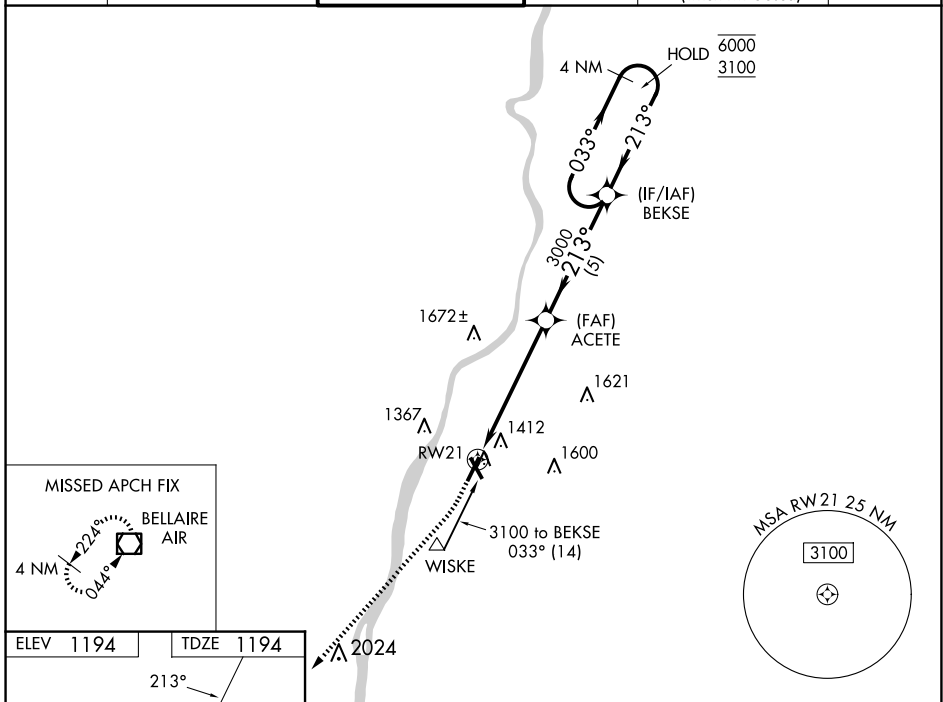
WHEELING OHIO COUNTY (H.L.G.)

RNP APCH.

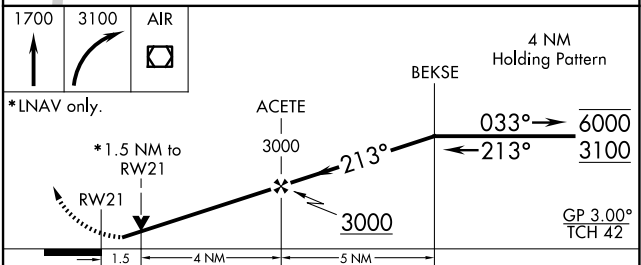
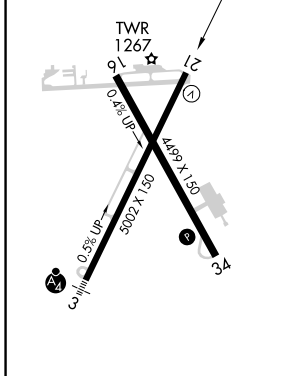
**▼** Rwy 21 helicopter visibility reduction below 3/4 SM NA. For uncompensated Baro-VNAV systems, procedure NA below -17°C or above 54°C.

MISSED APPROACH: Climb to 1700 then climbing right turn to 3100 direct AIR VOR/DME and hold.

ASOS <b>127.375</b>	PITTSBURGH APP CON <b>125.275 285.575</b>	WHEELING TOWER * <b>118.1 (CTAF) 0257.8</b>	GND CON <b>121.75</b>	CLNC DEL <b>125.275</b> (when twr closed)	UNICOM <b>122.95</b>
------------------------	--	--	--------------------------	---	-------------------------



ELEV <b>1194</b>	TDZE <b>1194</b>
------------------	------------------



CATEGORY	A	B	C	D
LPV DA		1444/50	250 (300-1)	
LNAV/VNAV DA		1653-1 3/8	459 (500-1 3/8)	
LNAV MDA	1700/55	506 (600-1)	1700-1 3/8	506 (600-1 3/8)
<b>C</b> CIRCLING	1720-1 526 (600-1)	1740-1 546 (600-1)	1920-2 726 (800-2)	1920-2 1/4 726 (800-2 1/4)

HIRL Rwy 3-21 **①**  
MIRL Rwy 16-34 **①**  
REIL Rwy 21 and 34 **①**

NE-4, 11 JUN 2026 to 09 JUL 2026

NE-4, 11 JUN 2026 to 09 JUL 2026