

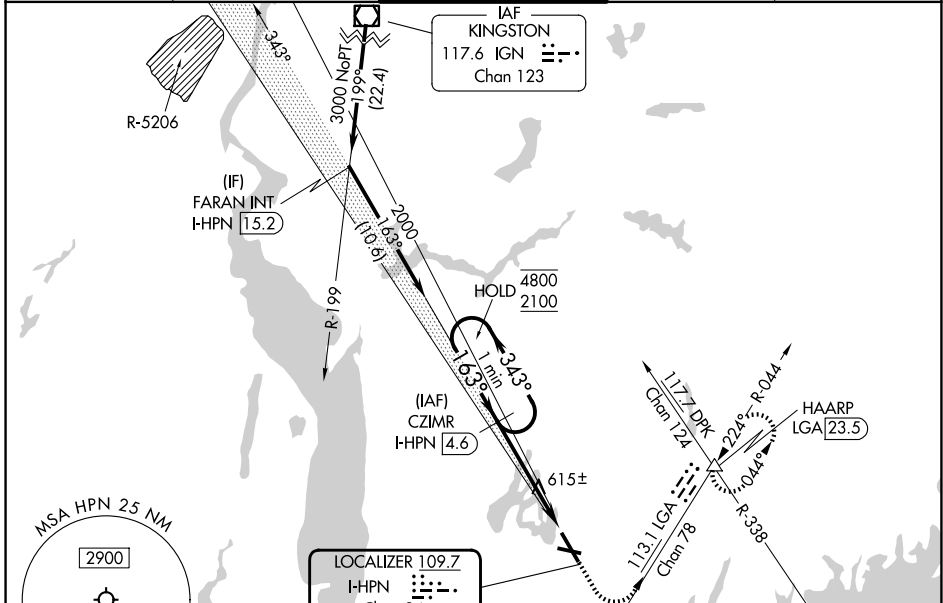
LOC/DME I-HPN 109.7 Chan 34	APP CRS 163°	Rwy Ldg 6549 TDZE 439 Apt Elev 439
--	------------------------	---

ILS RWY 16 (SA CAT I & II)

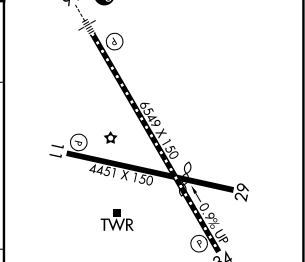
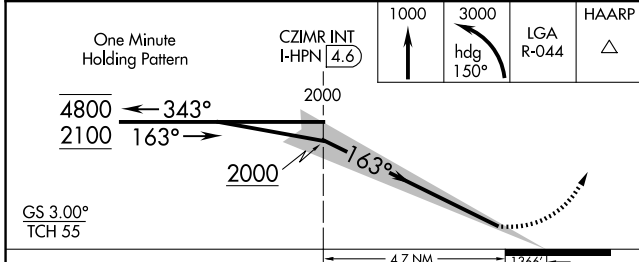
WESTCHESTER COUNTY (HPN)

<p>▽ SA CAT I: Requires specific OPSPEC, MSPEC, or LOA approval and use of HUD to DH.</p> <p>△ SA CAT II: Reduced lighting: Requires specific OPSPEC, MSPEC, or LOA approval and use of autoland or HUD to touchdown. Procedure NA when tower closed.</p>	<p>MALSR</p>	<p>MISSED APPROACH: Climb to 1000 then climbing left turn to 3000 on heading 150° and LGA VOR/DME R-044 to HAARP INT/LGA 23.5 DME and hold, continue climb-in-hold to 3000.</p>
---	--------------	---

D-ATIS 133.8	NEW YORK APP CON 120.8 126.4 257.65	WESTCHESTER TOWER ★ 118.575 (CTAF) 0 284.65	GND CON 121.825	UNICOM 122.95
------------------------	---	---	---------------------------	-------------------------



ELEV 439	TDZE 439
----------	----------



CATEGORY	A	B	C	D
S-ILS 16	SA CAT I	RA 198/14	150 DA 589	
S-ILS 16	SA CAT II	RA 113/12	100 DA 539	

SA CATEGORY I & II SPECIAL AIRCREW & AIRCRAFT CERTIFICATION REQUIRED

NE-2, 11 JUN 2026 to 09 JUL 2026

NE-2, 11 JUN 2026 to 09 JUL 2026