

APP CRS	Rwy Ldg	<b>6549</b>
<b>343°</b>	TDZE	<b>401</b>
	Apt Elev	<b>439</b>

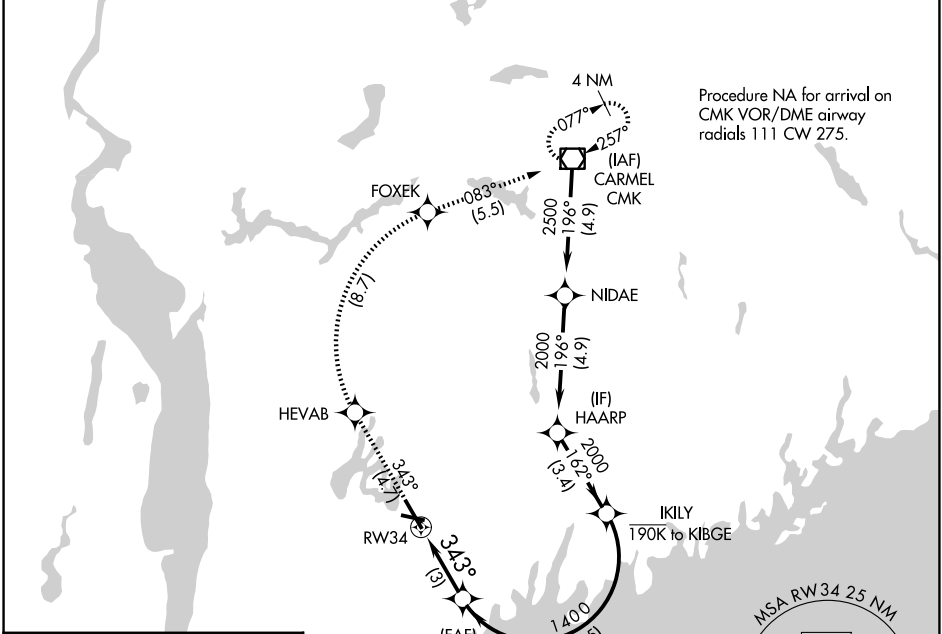
# RNAV (RNP) Z RWY 34

WESTCHESTER COUNTY (HPN)

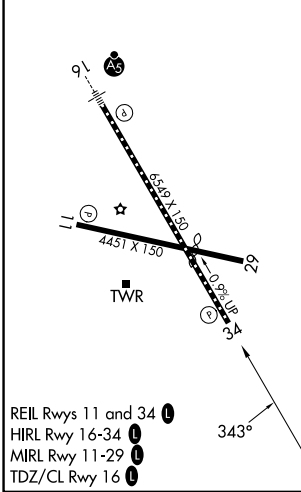
▼ For uncompensated Baro-VNAV systems, procedure NA below -14°C (7°F) or above 54°C (130°F). RF required. GPS required.

MISSED APPROACH: Climb to 3000 on track 343° to HEVAB, right turn to FOXEK, then on track 083° to CMK VOR/DME and hold.

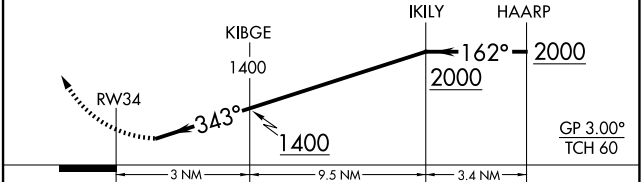
D-ATIS <b>133.8</b>	NEW YORK APP CON <b>120.8 126.4 257.65</b>	WESTCHESTER TOWER ★ <b>118.575 (CTAF) 0 284.65</b>	GND CON <b>121.825</b>	UNICOM <b>122.95</b>
------------------------	---	---	---------------------------	-------------------------



ELEV 439	<b>D</b>	TDZE 401
----------	----------	----------



3000	↑ tr 343°	HEVAB	↷	FOXEK	tr 083°	CMK	VGSI and RNAV glidepath not coincident (VGSI Angle 3.00/TCH 56).
------	-----------	-------	---	-------	---------	-----	--



CATEGORY	A	B	C	D
RNP 0.30 DA	788-1 7/8		387 (400-1 3/8)	

**AUTHORIZATION REQUIRED**

NE-2, 11 JUN 2026 to 09 JUL 2026

NE-2, 11 JUN 2026 to 09 JUL 2026