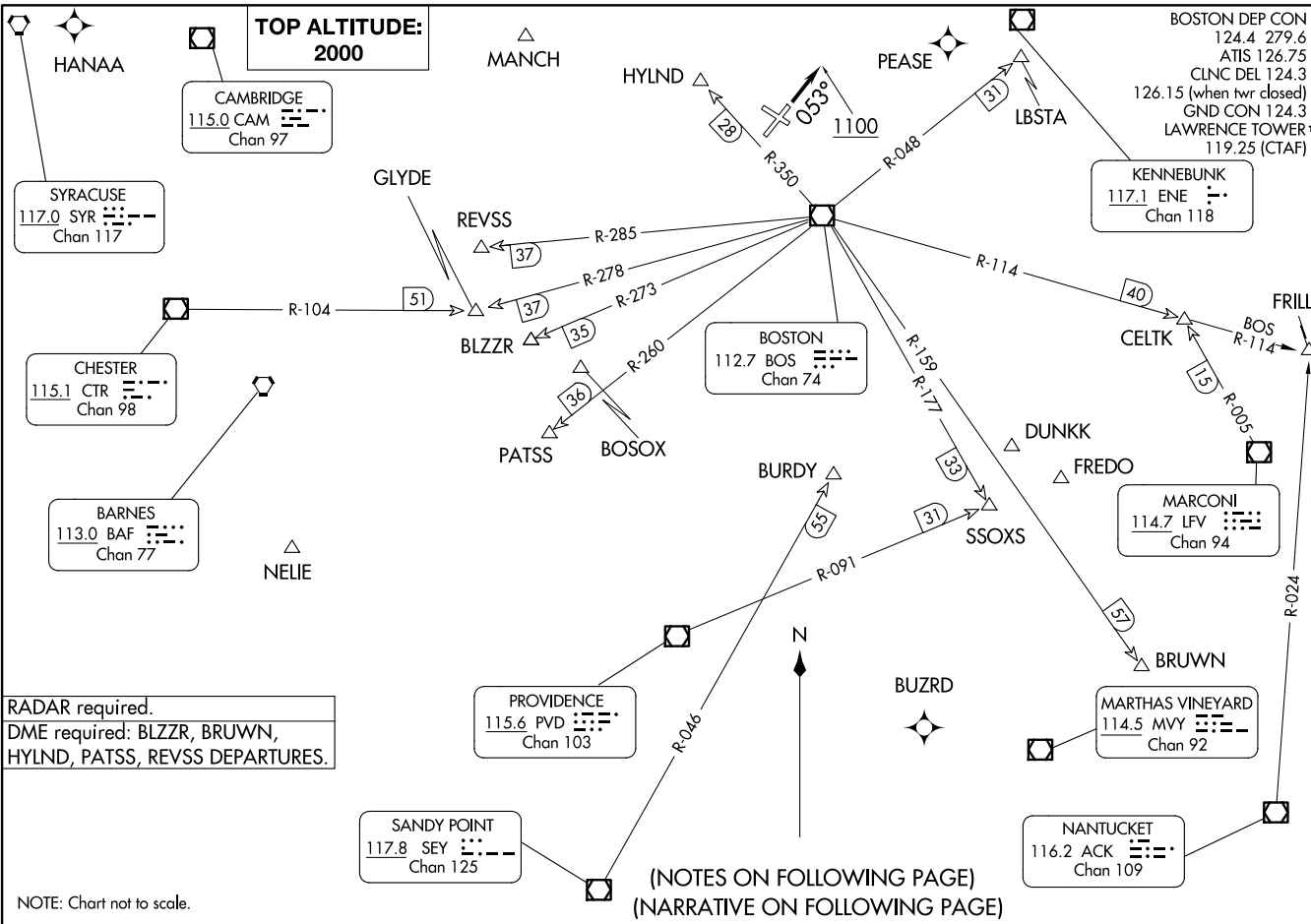


LAWRENCE TWO DEPARTURE  
(LWM2.LWM) 29DEC22

(LWM2.LWM) 24193  
LAWRENCE TWO DEPARTURE

AL-654 (FAA)

LAWRENCE MUNI (LWM)  
LAWRENCE, MASSACHUSETTS



**TOP ALTITUDE:  
2000**

BOSTON DEP CON  
124.4 279.6  
ATIS 126.75  
CLNC DEL 124.3  
126.15 (when twr closed)  
GND CON 124.3  
LAWRENCE TOWER\*  
119.25 (CTAF)

RADAR required.  
DME required: BLZZR, BRUWN,  
HYLND, PATSS, REVSS DEPARTURES.

SANDY POINT  
117.8 SEY ---  
Chan 125

PROVIDENCE  
115.6 PVD ---  
Chan 103

NANTUCKET  
116.2 ACK ---  
Chan 109

MARCONI  
114.7 LFV ---  
Chan 94

MARTHAS VINEYARD  
114.5 MVY ---  
Chan 92

BOSTON  
112.7 BOS ---  
Chan 74

KENNEBUNK  
117.1 ENE ---  
Chan 118

SYRACUSE  
117.0 SYR ---  
Chan 117

CHESTER  
115.1 CTR ---  
Chan 98

BARNES  
113.0 BAF ---  
Chan 77

CAMBRIDGE  
115.0 CAM ---  
Chan 97

(NOTES ON FOLLOWING PAGE)  
(NARRATIVE ON FOLLOWING PAGE)

NOTE: Chart not to scale.

# LAWRENCE TWO DEPARTURE



## DEPARTURE ROUTE DESCRIPTION

TAKEOFF RUNWAY 5: Climb on heading 053° to 1100, then as assigned by ATC, thence....

TAKEOFF RUNWAYS 14, 23, 32: Climb on heading as assigned by ATC, thence....

....expect RADAR vectors to assigned route/navaid/fix. Maintain 2000.  
Expect filed altitude/flight level 10 minutes after departure.

### TAKEOFF MINIMUMS:

Rwy 5: 300-1½ or standard with minimum climb of 435' per NM to 500.

Rwy 14: 300-1 or standard with minimum climb of 625' per NM to 600.

Rwy 23: 300-1 or standard with minimum climb of 350' per NM to 400.

Rwy 32: Standard.

NOTE: Non RNAV equipped aircraft can expect vectors on assigned route.

NOTE: BLZZR DEPARTURES expect vectors on BOS R-273.

NOTE: BRUWN DEPARTURES expect vectors on BOS R-159.

NOTE: CELTK DEPARTURES expect vectors on BOS R-114.

NOTE: HYLND DEPARTURES expect vectors on BOS R-350.

NOTE: PATSS DEPARTURES expect vectors on BOS R-260.

NOTE: REVSS DEPARTURES expect vectors on BOS R-285.

NOTE: SSOXS DEPARTURES expect vectors on BOS R-177.

NE-1, 11 JUN 2026 to 09 JUL 2026

NE-1, 11 JUN 2026 to 09 JUL 2026