

(GIPLE7.GIPLE) 24137

AL-655 (FAA)

GIPLE SEVEN DEPARTURE (RNAV) Departure Routes

CINCINNATI/NORTHERN KENTUCKY INTL (CVG)

COVINGTON, KENTUCKY

RNAV 1 - DME/DME/IRU or GPS.

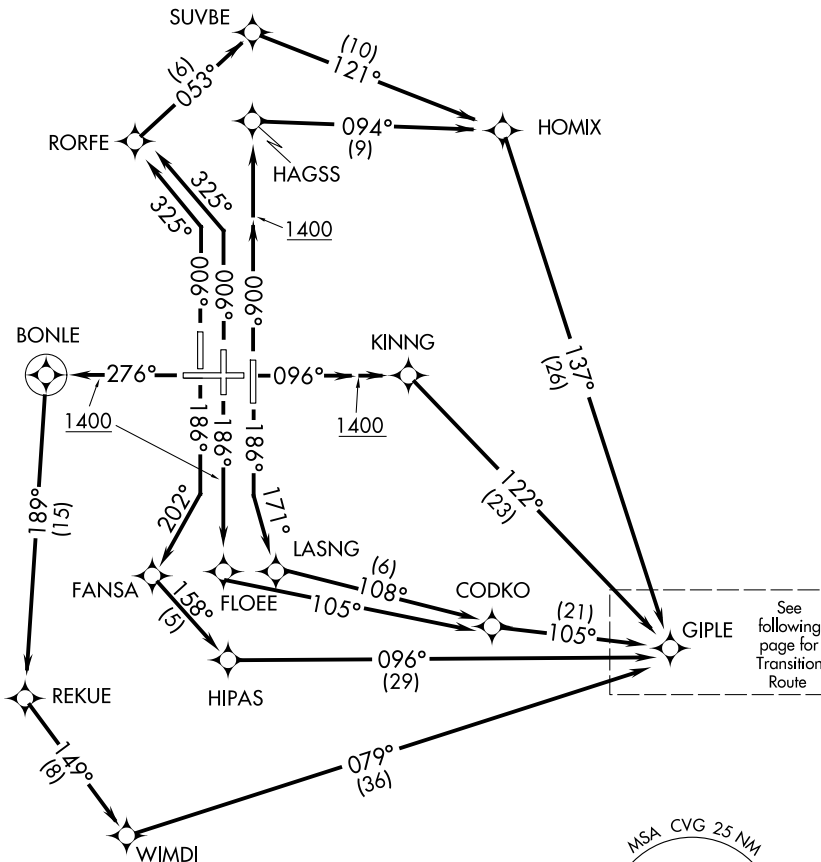
RADAR required for non-GPS equipped aircraft.

TOP ALTITUDE:
(JETS/PROPS)
5000 4000

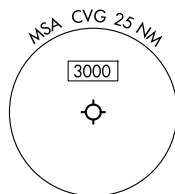
D-ATIS DEP 135.3
 CINCINNATI TOWER
 118.3 (RWYS 18C/36C, 9/27)
 118.975 360.85 (RWY 18L/36R)
 133.325 (RWY 18R/36L)
 GND CON
 121.7
 CLNC DEL
 127.175
 CPDLC
 CINCINNATI DEP CON
 126.65 254.25 (001°-180°)
 128.7 254.25 (181°-360°)

TAKEOFF MINIMUMS:

Rwys 9, 18L/C/R, 27, 36L/C/R: Standard.



NOTE: Transponder code will be issued via PDC or Cincinnati CLNC DEL.
 NOTE: Increase speed to 250K until reaching/leaving 10000'. If unable, advise ATC.



NOTE: Chart not to scale.

(CONTINUED ON FOLLOWING PAGE)

GIPLE SEVEN DEPARTURE (RNAV) Departure Routes

COVINGTON, KENTUCKY

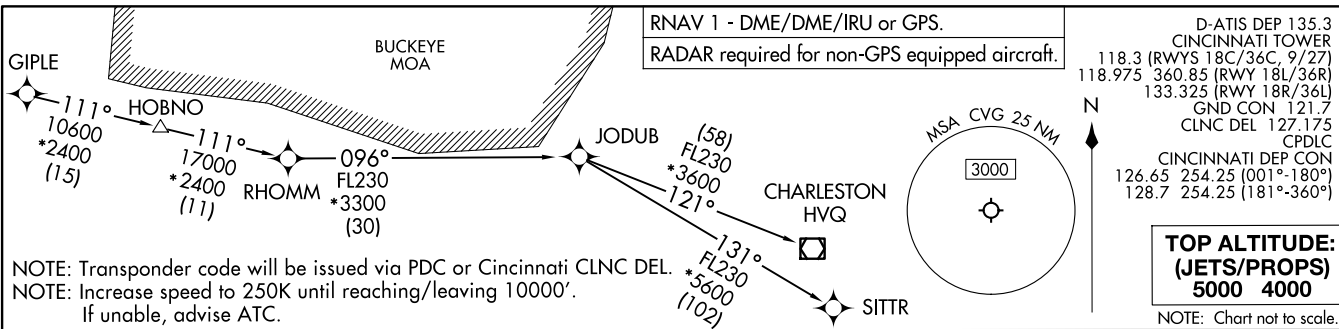
(GIPLE7.GIPLE) 21MAR24

CINCINNATI/NORTHERN KENTUCKY INTL (CVG)

SE-1, 11 JUN 2026 to 09 JUL 2026

SE-1, 11 JUN 2026 to 09 JUL 2026

GIPLE SEVEN DEPARTURE (RNAV) Transition Route
 (GIPLEZ.GIPLE) 21 MAR 24
 COVINGTON, KENTUCKY
 CINCINNATI/NORTHERN KENTUCKY INTL (CVG)



NOTE: Transponder code will be issued via PDC or Cincinnati CLNC DEL.
 NOTE: Increase speed to 250K until reaching/leaving 10000'.
 If unable, advise ATC.

DEPARTURE ROUTE DESCRIPTION

- TAKEOFF RUNWAY 9: Climb on heading 096° to 1400, then direct KINNG, then on track 122° to GIPLE, thence ...
- TAKEOFF RUNWAY 18L: Climb on heading 186° to intercept course 171° to LASNG, then on track 108° to CODKO, then on track 105° to GIPLE, thence ...
- TAKEOFF RUNWAY 18C: Climb on heading 186° to 1400, then direct FLOEE, then on track 105° to CODKO, then on track 105° to GIPLE, thence ...
- TAKEOFF RUNWAY 18R: Climb on heading 186° to intercept course 202° to FANSA, then on track 158° to HIPAS, then on track 096° to GIPLE, thence ...
- TAKEOFF RUNWAY 27: Climb on heading 276° to 1400, then direct BONLE, then on track 189° to REKUE, then on track 149° to WIMDI, then on track 079° to GIPLE, thence ...
- TAKEOFF RUNWAY 36L: Climb on heading 006° to intercept course 325° to RORFE, then on track 053° to SUVBE, then on track 121° to HOMIX, then on track 137° to GIPLE, thence...
- TAKEOFF RUNWAY 36C: Climb on heading 006° to intercept course 325° to RORFE, then on track 053° to SUVBE, then on track 121° to HOMIX, then on track 137° to GIPLE, thence ...
- TAKEOFF RUNWAY 36R: Climb on heading 006° to 1400, then direct HAGSS, then on track 094° to HOMIX, then on track 137° to GIPLE, thence ...

...turbojets: maintain 5000, all other aircraft: maintain 4000. Expect clearance to filed altitude within ten minutes after departure.

- CHARLESTON TRANSITION (GIPLEZ.HVQ):
- JODUB TRANSITION (GIPLEZ.JODUB):
- SITTR TRANSITION (GIPLEZ.SITTR):

(GIPLEZ.GIPLE) 24137
 GIPLE SEVEN DEPARTURE (RNAV) Transition Route
 AL-655 (FAA)
 CINCINNATI/NORTHERN KENTUCKY INTL (CVG)
 COVINGTON, KENTUCKY