

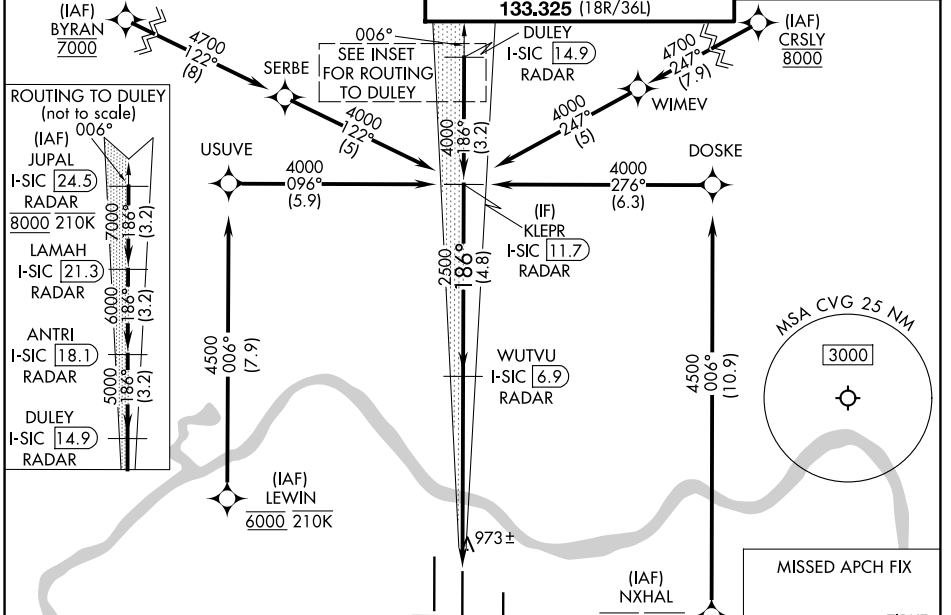
LOC/DME I-SIC 111.55 Chan 52(Y)	APP CRS 186°	Rwy Ldg 11000 TDZE 875 Apt Elev 896
---	------------------------	--

ILS RWY 18C (SA CAT I & II)

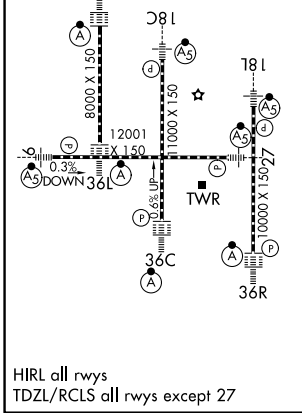
CINCINNATI/NORTHERN KENTUCKY INTL (CVG)

RNP APCH - GPS. RADAR required.	MALSR	MISSED APPROACH: Climb to 1300 then climb to 3000 direct ZIRKE and hold.
<p>Simultaneous approach authorized. Requires specific OPSPEC, MSPEC, or LOA approval.</p>		

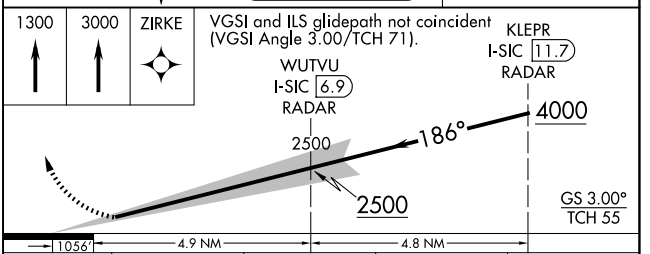
D-ATIS 134.375	CINCINNATI APP CON 119.7 363.15 (090°-269°) 123.875 363.15 (270°-089°)	CINCINNATI TOWER 118.975 360.85 (18L/36R) 118.3 (9/27, 18C/36C) 133.325 (18R/36L)	GND CON 121.7
--------------------------	--	---	-------------------------



ELEV 896	D	TDZE 875
-----------------	----------	-----------------



HIRL all rwys
TDZL/RCLS all rwys except 27



CATEGORY	A	B	C	D
S-ILS 18C	SA CAT I	RA 188/16	150 DA 1025	
S-ILS 18C	SA CAT II	RA 96/12	100 DA 975	

SA CATEGORY I & II ILS-SPECIAL AIRCREW & AIRCRAFT CERTIFICATION REQUIRED

SE-1, 11 JUN 2026 to 09 JUL 2026

SE-1, 11 JUN 2026 to 09 JUL 2026