

LOC/DME I-VAC 110.75 Chan 44 (Y)	APP CRS 006°	Rwy Ldg 8000 TDZE 873 Apt Elev 896
--	------------------------	--

ILS RWY 36L (CAT II)

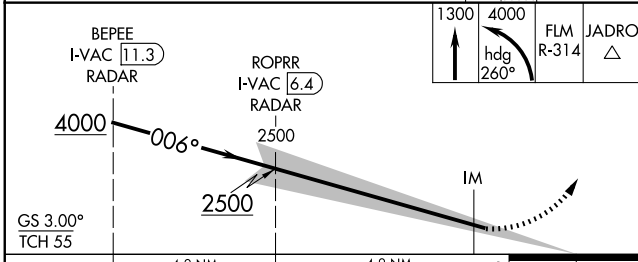
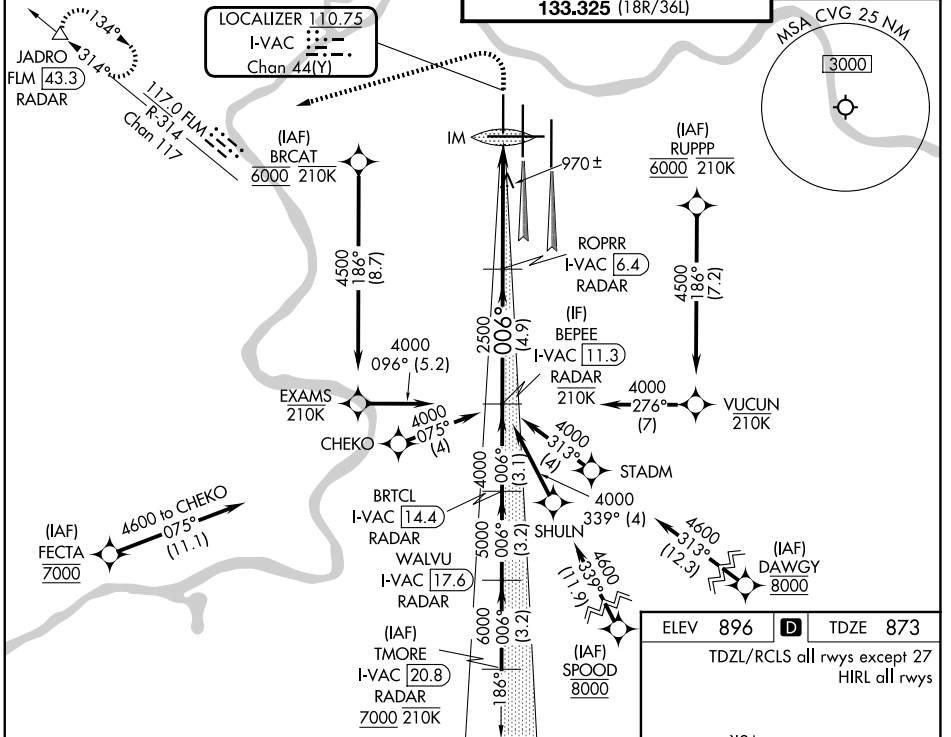
CINCINNATI/NORTHERN KENTUCKY INTL (CVG)

RNP APCH - GPS. From FECTA or SPOOD or DAWGY or RUPPP or BRCAT.
DME or RADAR required. RADAR required for procedure entry at TMORE.

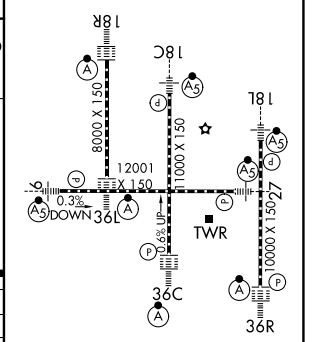
Simultaneous approach authorized.

ALSF-2
MISSED APPROACH: Climb to 1300 then climbing left turn to 4000 on heading 260° and on FLM VOR/DME R-314 to JADRO/FLM 43.3 DME/RADAR and hold.

D-ATIS 134.375	CINCINNATI APP CON 119.7 363.15 (090°-269°) 123.875 363.15 (270°-089°)	CINCINNATI TOWER 118.975 360.85 (18L/36R) 118.3 (9/27, 18C/36C) 133.325 (18R/36L)	GND CON 121.7
--------------------------	--	---	-------------------------



ELEV 896	D TDZE 873
TDZL/RCLS all rwy's except 27 HIRL all rwy's	



CATEGORY	A	B	C	D
S-ILS 36L		RA 100/12	100 DA 973	

CATEGORY II ILS - SPECIAL AIRCREW & AIRCRAFT CERTIFICATION REQUIRED

SE-1, 11 JUN 2026 to 09 JUL 2026

SE-1, 11 JUN 2026 to 09 JUL 2026