

LOC/DME I-EEI 110.35 Chan 40 (Y)	APP CRS 006°	Rwy Ldg 10000 TDZE 896 Apt Elev 896
--	------------------------	--

ILS RWY 36R (CAT II & III)

CINCINNATI/NORTHERN KENTUCKY INTL (CVG)

RNP APCH - GPS. From BRCAT or RUPPP or FECTA or SPOOD or DAWGY.
DME or RADAR required. RADAR required for procedure entry at KYKAT.

ALSF-2



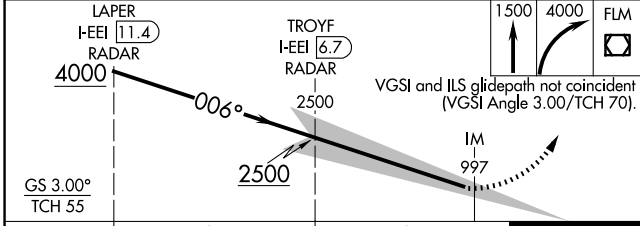
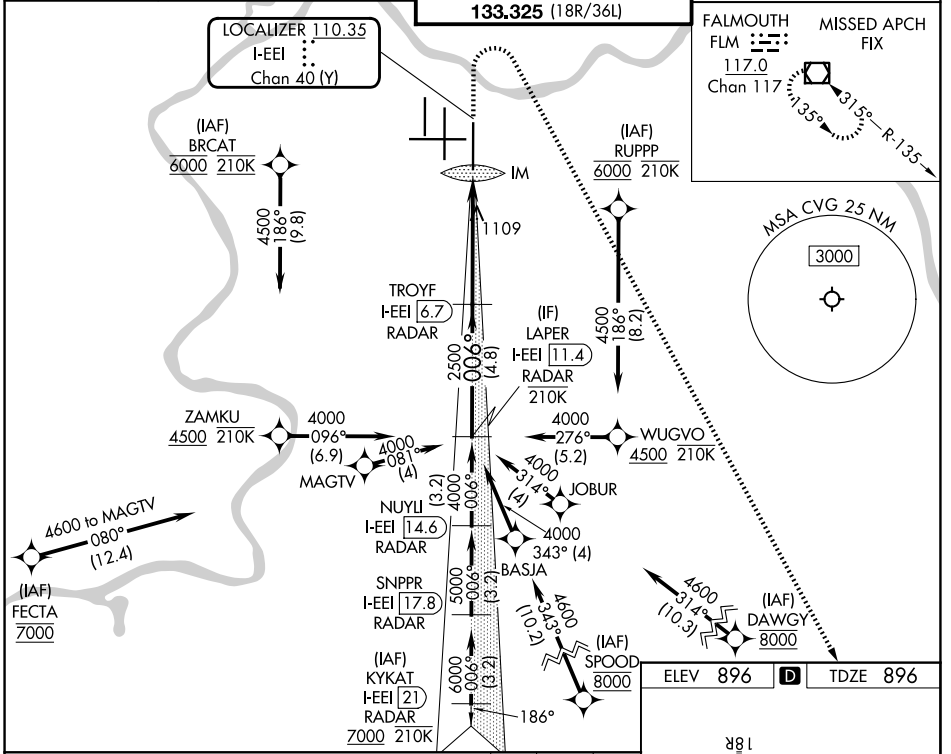
MISSED APPROACH: Climb to 1500 then climbing right turn to 4000 direct FLM VOR/DME and hold.

Simultaneous approach authorized.

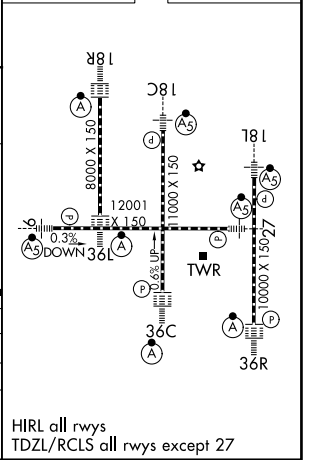
D-ATIS 134.375	CINCINNATI APP CON 119.7 363.15 (090°-269°) 123.875 363.15 (270°-089°)	CINCINNATI TOWER 118.975 360.85 (18L/36R) 118.3 (9/27, 18C/36C) 133.325 (18R/36L)	GND CON 121.7
--------------------------	--	---	-------------------------

LOCALIZER **110.35**
I-EEI
Chan **40 (Y)**

FALMOUTH MISSED APCH
FLM FIX
117.0
Chan 117
315°-R-135°



ELEV 896	D	TDZE 896
----------	----------	----------



CATEGORY	A	B	C	D
S-ILS 36R	CAT II RA 97/12 100 DA 996			
S-ILS 36R	CAT III RVR 06			

CATEGORY II & III ILS - SPECIAL AIRCREW & AIRCRAFT CERTIFICATION REQUIRED

HIRL all rwws
TDZL/RCLS all rwws except 27

SE-1, 11 JUN 2026 to 09 JUL 2026

SE-1, 11 JUN 2026 to 09 JUL 2026