

LOC/DME I-SIC 111.55 Chan 52 (Y)	APP CRS 186°	Rwy Ldg 11000 TDZE 875 Apt Elev 896
--	------------------------	--

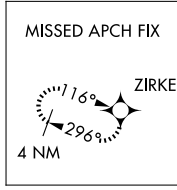
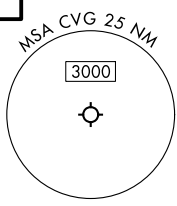
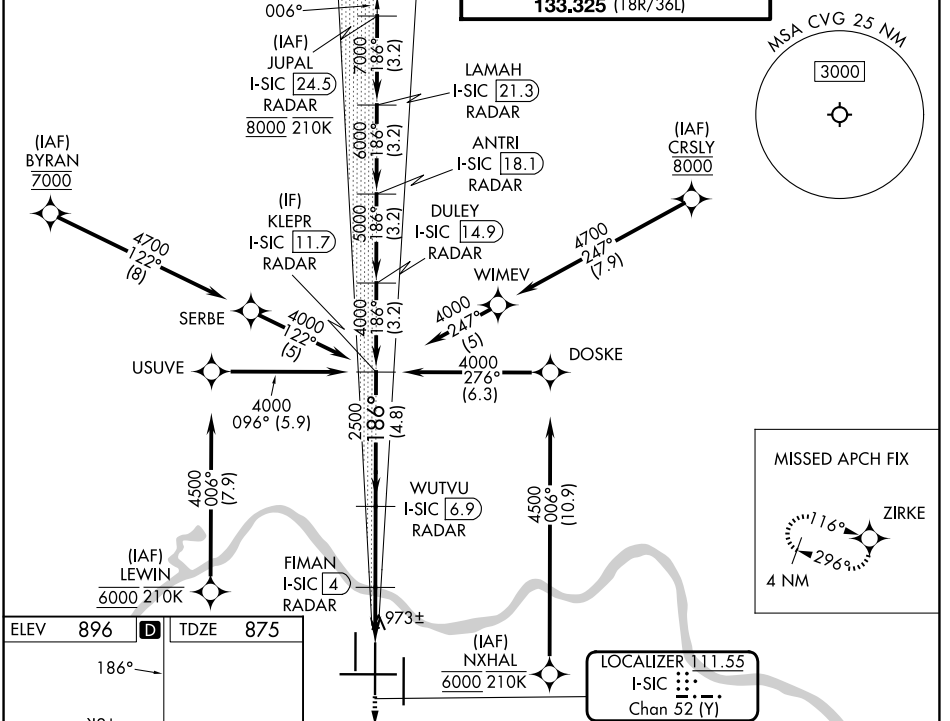
ILS or LOC RWY 18C

CINCINNATI/NORTHERN KENTUCKY INTL (CVG)

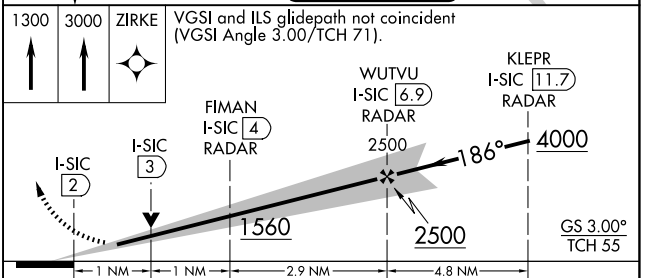
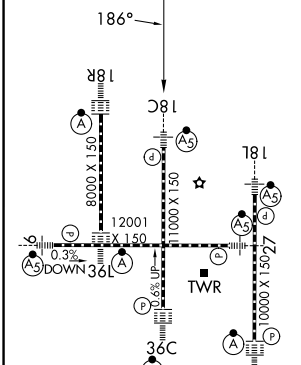
RNP APCH - GPS.
RADAR required.
Simultaneous approach authorized.

MALSR
MISSED APPROACH: Climb to 1300, then climb to 3000 direct ZIRKE and hold.

D-ATIS 134.375	CINCINNATI APP CON 119.7 363.15 (090°-269°) 123.875 363.15 (270°-089°)	CINCINNATI TOWER 118.975 360.85 (18L/36R) 118.3 (9/27, 18C/36C) 133.325 (18R/36L)	GND CON 121.7
--------------------------	--	---	-------------------------



ELEV 896	D	TDZE 875
----------	----------	----------



HIRL all rwys
TDZL/RCLS all rwys except 27
FAF to MAP 4.9 NM

Knots	60	90	120	150	180
Min:Sec	4:54	3:16	2:27	1:58	1:38

CATEGORY	A	B	C	D
S-ILS 18C	1075/18 200 (200-½)			
S-LOC 18C	1260/24	385 (400-½)	1260/35	385 (400-¾)
CIRCLING	1460-1	564 (600-1)	1560-1¾ 664 (700-1¾)	1560-2 664 (700-2)

SE-1, 11 JUN 2026 to 09 JUL 2026

SE-1, 11 JUN 2026 to 09 JUL 2026