

LOC/DME I-CJN 110.75 Chan 44 (Y)	APP CRS 186°	Rwy Ldg 8000 TDZE 868 Apt Elev 896
--	------------------------	--

ILS or LOC RWY 18R

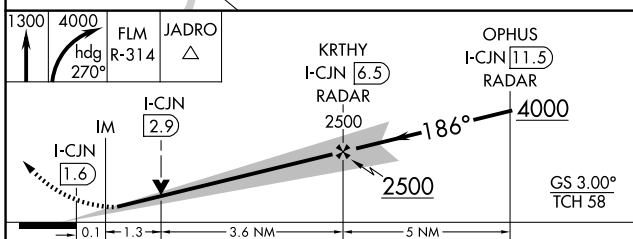
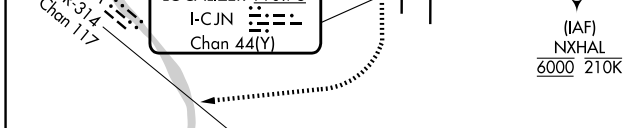
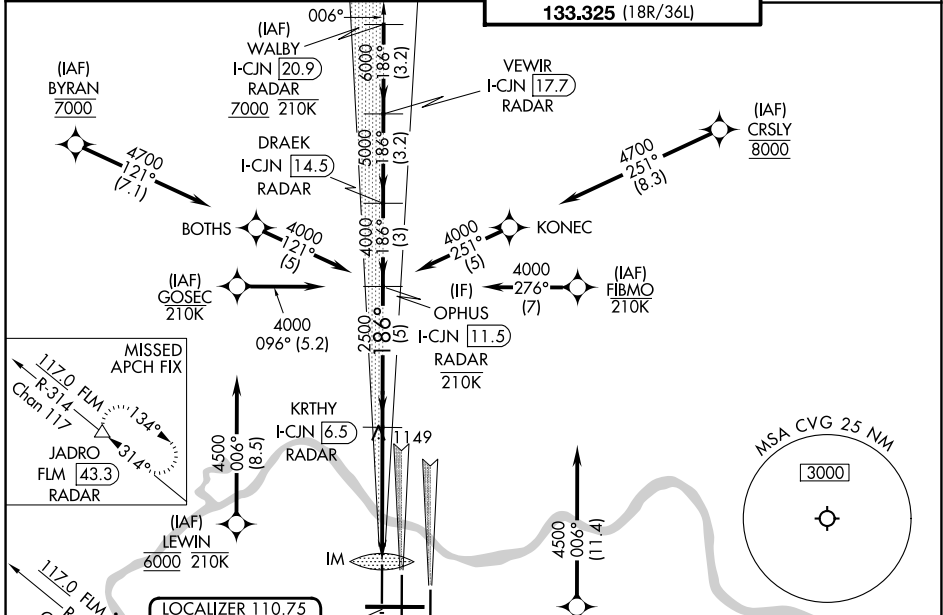
CINCINNATI/NORTHERN KENTUCKY INTL (CVG)

RNP APCH - GPS. From BYRAN, CRSLY, GOSEC, FIBMO, LEWIN and NXHAL.
DME or RADAR required. RADAR required for procedure entry at WALBY.
For inop ALS, increase S-LOC 18R Cats C and D visibility to 1 1/2 SM. Simultaneous approach authorized with Rwy 18L/C. Use of FD or AP required during simultaneous operations.

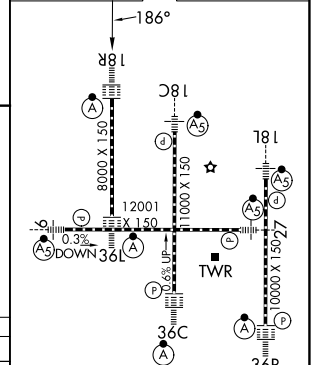


MISSED APPROACH: Climb to 1300 then climbing right turn to 4000 on heading 270° and FLM VOR/DME R-314 to JADRO/FLM 43.3 DME/RADAR and hold.

D-ATIS 134.375	CINCINNATI APP CON 119.7 363.15 (090°-269°) 123.875 363.15 (270°-089°)	CINCINNATI TOWER 118.975 360.85 (18L/36R) 118.3 (9/27, 18C/36C) 133.325 (18R/36L)	GND CON 121.7
--------------------------	--	---	-------------------------



ELEV 896	D	TDZE 868
----------	----------	----------



CATEGORY	A	B	C	D
S-ILS 18R	1068/18		200 (200-1/2)	
S-LOC 18R	1360/24	492 (500-1/2)	1360/50	492 (500-1)
CIRCLING	1460-1	564 (600-1)	1560-1 3/4 664 (700-1 3/4)	1560-2 664 (700-2)

HIRL all rwys TDZL/RCLS all rwys except 27					
FAF to MAP 5 NM					
Knots	60	90	120	150	180
Min:Sec	5:00	3:20	2:30	2:00	1:40

SE-1, 11 JUN 2026 to 09 JUL 2026

SE-1, 11 JUN 2026 to 09 JUL 2026