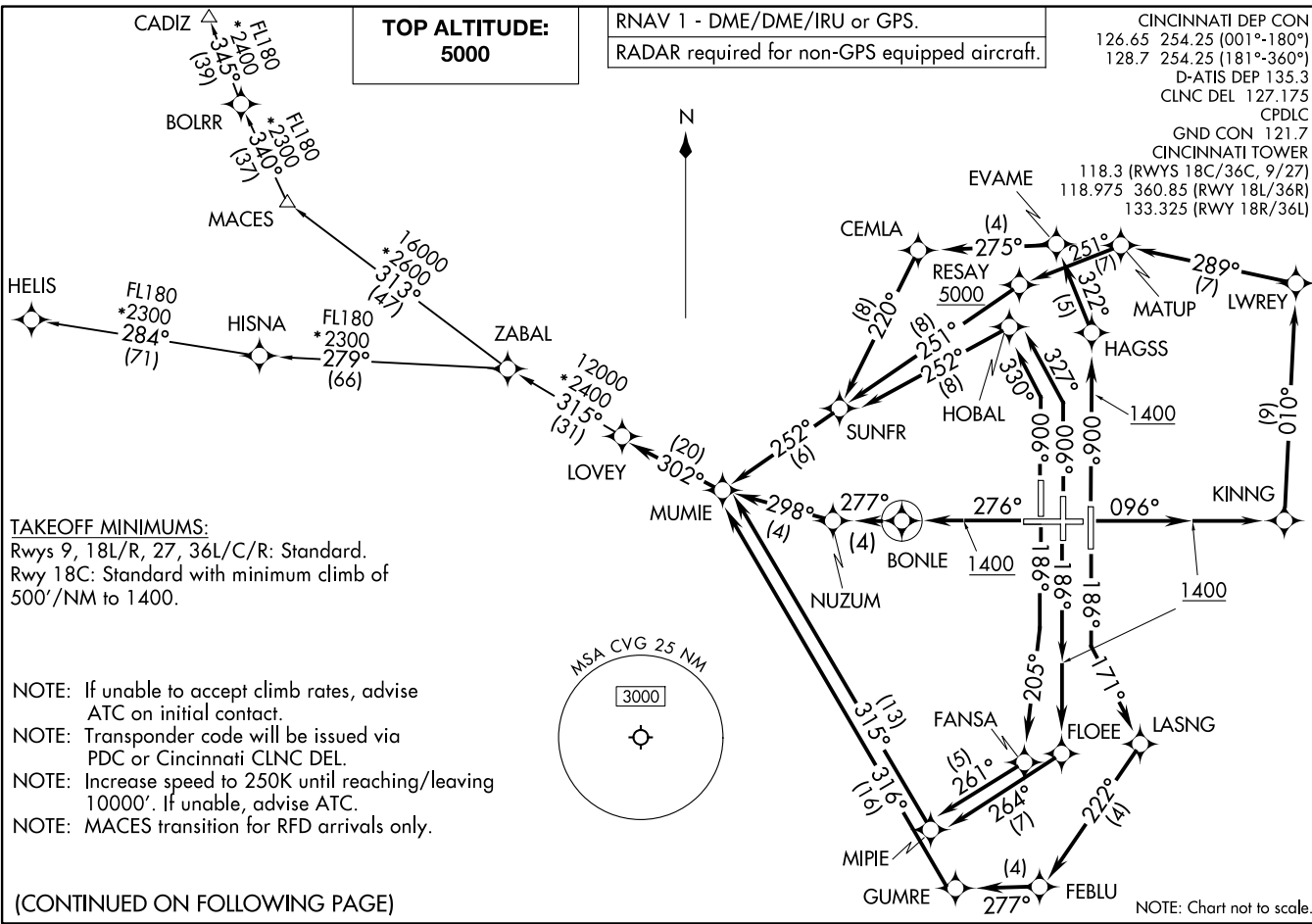


LOVEY EIGHT DEPARTURE (RNAV)  
(LOVEY8.LOVEY) 07AUG25

CINCINNATI/NORTHERN KENTUCKY INTL (CVG)  
COVINGTON, KENTUCKY



(LOVEY8.LOVEY) 25219  
LOVEY EIGHT DEPARTURE (RNAV)

CINCINNATI/NORTHERN KENTUCKY INTL (CVG)  
AL-655 (FAA)  
COVINGTON, KENTUCKY



DEPARTURE ROUTE DESCRIPTION

TAKEOFF RUNWAY 9: Climb on heading 096° to 1400, then direct KINNG, then on track 010° to LWREY, then on track 289° to MATUP, then on track 251° to cross RESAY at or above 5000, then on track 251° to SUNFR, then on track 252° to MUMIE, thence. . . .

TAKEOFF RUNWAY 18L: Climb on heading 186° to intercept course 171° to LASNG, then on track 222° to FEBLU, then on track 277° to GUMRE, then track 316° to MUMIE, thence. . . .

TAKEOFF RUNWAY 18C: Climb on heading 186° to 1400, then direct FLOEE, then on track 264° to MIPIE, then on track to 315° to MUMIE, thence. . . .

TAKEOFF RUNWAY 18R: Climb on heading 186° to intercept course 205° to FANSA, then on track 261° to MIPIE, then on track 315° to MUMIE, thence. . . .

TAKEOFF RUNWAY 27: Climb on heading 276° to 1400, then direct BONLE, then on track 277° to NUZUM, then on track 298° to MUMIE, thence. . . .

TAKEOFF RUNWAY 36L: Climb on heading 006° to intercept course 330° to HOBAL, then on track 252° to SUNFR, then on track 252° to MUMIE, thence. . . .

TAKEOFF RUNWAY 36C: Climb on heading 006° to intercept course 327° to HOBAL, then on track 252° to SUNFR, then on track 252° to MUMIE, thence. . . .

TAKEOFF RUNWAY 36R: Climb on heading 006° to 1400, then direct HAGSS, then on track 322° to EVAME, then on track 275° to CEMLA, then on track 220° to SUNFR, then on track 252° to MUMIE, thence. . . .

. . . . on depicted route to LOVEY. Maintain 5000. Expect clearance to filed altitude within 10 minutes after departure.

CADIZ TRANSITION (LOVEY8.CADIZ):

HELIS TRANSITION (LOVEY8.HELIS):

MACES TRANSITION (LOVEY8.MACES):

SE-1, 11 JUN 2026 to 09 JUL 2026

SE-1, 11 JUN 2026 to 09 JUL 2026