


APP CRS	Rwy Ldg <b>11000</b>
<b>186°</b>	TDZE <b>875</b>
	Apt Elev <b>896</b>

# RNAV (RNP) Z RWY 18C

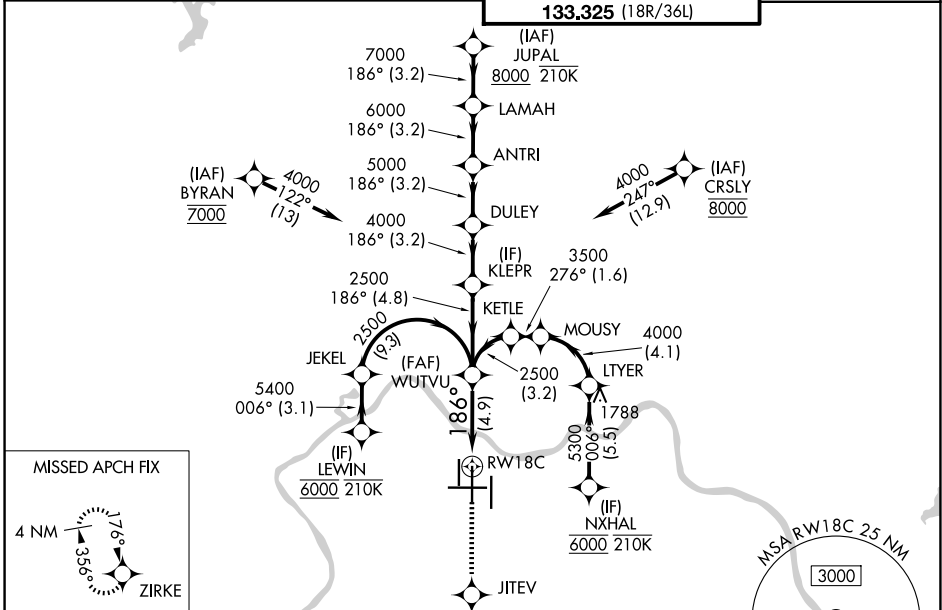
CINCINNATI/NORTHERN KENTUCKY INTL (CVG)

RNP AR APCH - GPS. Authorization required. From JEKEL or LTYER: RF.

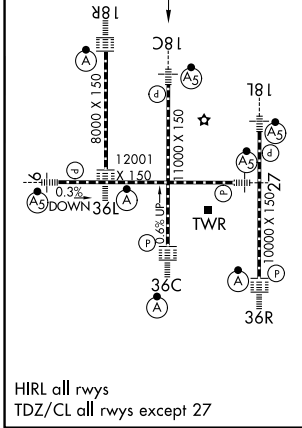
MALSR 

MISSED APPROACH: Climb to 3000 direct JITEV and on track 181° to ZIRKE and hold.

D-ATIS <b>134.375</b>	CINCINNATI APP CON <b>119.7 363.15</b> (090°-269°) <b>123.875 363.15</b> (270°-089°)	CINCINNATI TOWER <b>118.975 360.85</b> (18L/36R) <b>118.3</b> (9/27, 18C/36C) <b>133.325</b> (18R/36L)	GND CON <b>121.7</b>
--------------------------	--	---	-------------------------



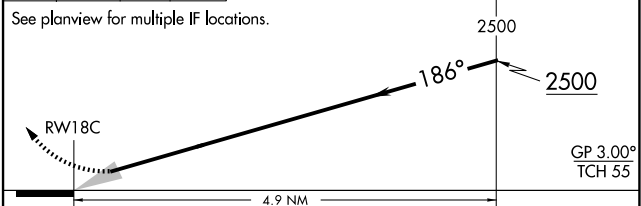
ELEV 896	<b>D</b>	TDZE 875
----------	----------	----------



3000 JITEV ZIRKE

VGSI and RNAV glidepath not coincident (VGSI Angle 3.00/TCH 71).

WUTVU 2500



CATEGORY	A	B	C	D
RNP 0.15 DA		1190/24	315 (300-1/2)	
RNP 0.30 DA		1389/55	514 (500-1)	

**AUTHORIZATION REQUIRED**

SE-1, 11 JUN 2026 to 09 JUL 2026

SE-1, 11 JUN 2026 to 09 JUL 2026