

APP CRS	Rwy Ldg	10000
186°	TDZE	889
	Apt Elev	896

RNAV (RNP) Z RWY 18L

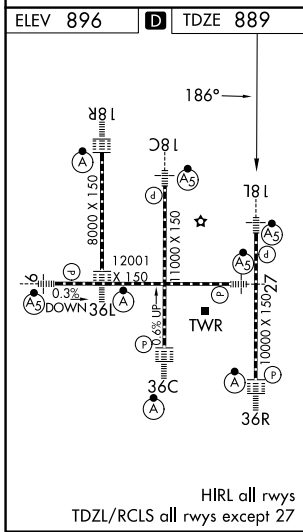
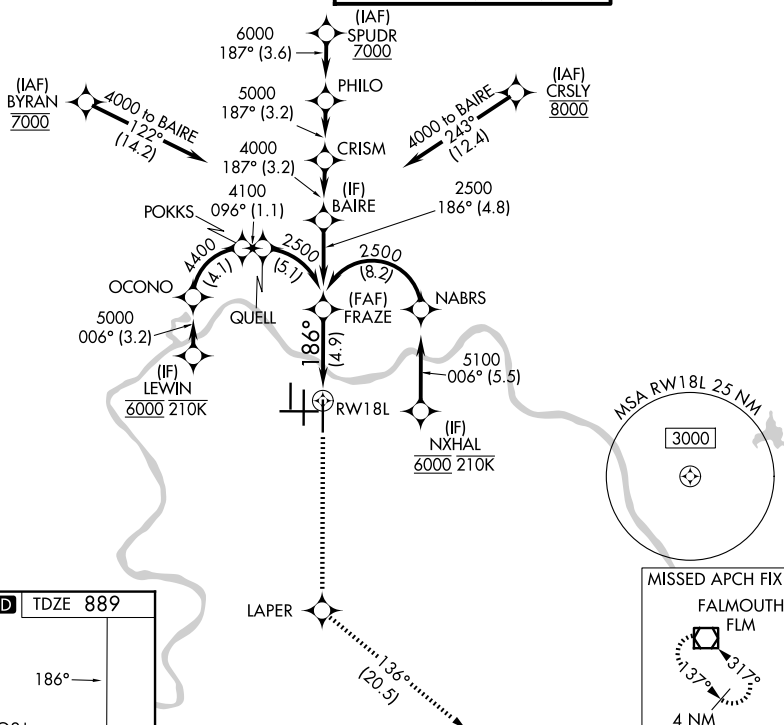
CINCINNATI/NORTHERN KENTUCKY INTL (CVG)

<p>RNP AR APCH - GPS. Authorization required. From NABRS or OCONO: RF.</p> <p>For uncompensated Baro-VNAV systems, procedure NA below -13°C or above 54°C. For inop ALS, increase RNP 0.25 all Cats visibility to 5500 and increase RNP 0.30 all Cats visibility to 1½ SM. Simultaneous approach authorized.</p>		<p>MALSR</p>	<p>MISSED APPROACH: Climb to 3000 direct LAPER and on track 136° to FLM VOR/DME and hold.</p>
--	--	--------------	---

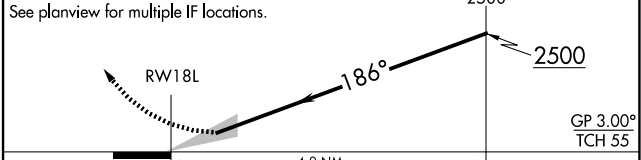
D-ATIS	CINCINNATI APP CON	CINCINNATI TOWER	GND CON
134.375	119.7 363.15 (090°-269°) 123.875 363.15 (270°-089°)	118.975 360.85 (18L/36R) 118.3 (9/27, 18C/36C) 133.325 (18R/36L)	121.7

SE-1, 11 JUN 2026 to 09 JUL 2026

SE-1, 11 JUN 2026 to 09 JUL 2026



3000	LAPER	tr 136°	FLM	VGSI and RNAV glidepath not coincident (VGSI Angle 3.00/TCH 71).
------	-------	---------	-----	--



CATEGORY	A	B	C	D
RNP 0.25 DA		1240/30	351 (400-½%)	
RNP 0.30 DA		1388/50	499 (500-1)	

AUTHORIZATION REQUIRED