

APP CRS **276°**
 Rwy Ldg **12000**
 TDZE **875**
 Apt Elev **896**

RNAV (RNP) Z RWY 27

CINCINNATI/NORTHERN KENTUCKY INTL (CVG)

RNP AR APCH - GPS. Authorization required. From FIBSU or ZALD: RF.

For uncompensated Baro-VNAV systems, procedure NA below -13°C or above 54°C. For inop ALS, increase RNP 0.15 all Cats visibility to RVR 5500, increase RNP 0.3 all Cats visibility to 1 3/8 SM.



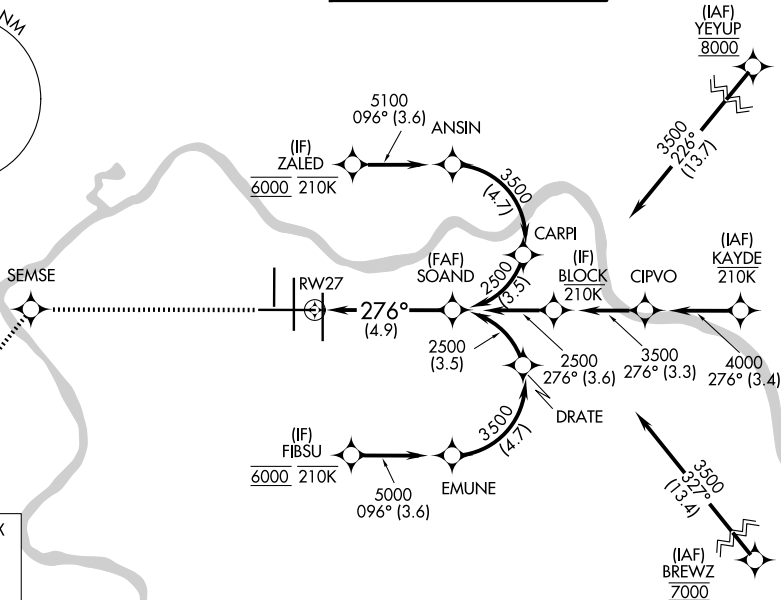
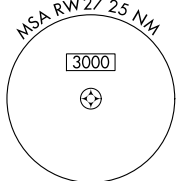
MISSED APPROACH: Climb to 3000 direct SEMSE and on track 225° to AVIEW and hold.

D-ATIS **134.375**

CINCINNATI APP CON
119.7 363.15 (090°-269°)
123.875 363.15 (270°-089°)

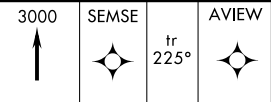
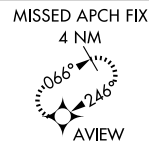
CINCINNATI TOWER
118.975 360.85 (18L/36R)
118.3 (9/27, 18C/36C)
133.325 (18R/36L)

GND CON **121.7**



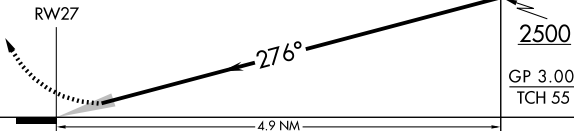
SE-1, 11 JUN 2026 to 09 JUL 2026

SE-1, 11 JUN 2026 to 09 JUL 2026

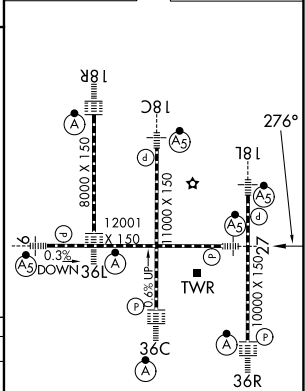


VGSI and RNAV glidepath not coincident (VGSI Angle 3.00/TCH 67).

See planview for multiple IF locations.



ELEV 896 **D** TDZE 875



CATEGORY	A	B	C	D
RNP 0.15 DA		1244/35	369 (400-%)	
RNP 0.23 DA		1260/35	385 (400-%)	
RNP 0.30 DA		1364/50	489 (500-1)	

AUTHORIZATION REQUIRED

HIRL all rwys
 TDZL/RCLS all rwys except 27