

RNAV (RNP) Z RWY 36C

CINCINNATI/NORTHERN KENTUCKY INTL (CVG)

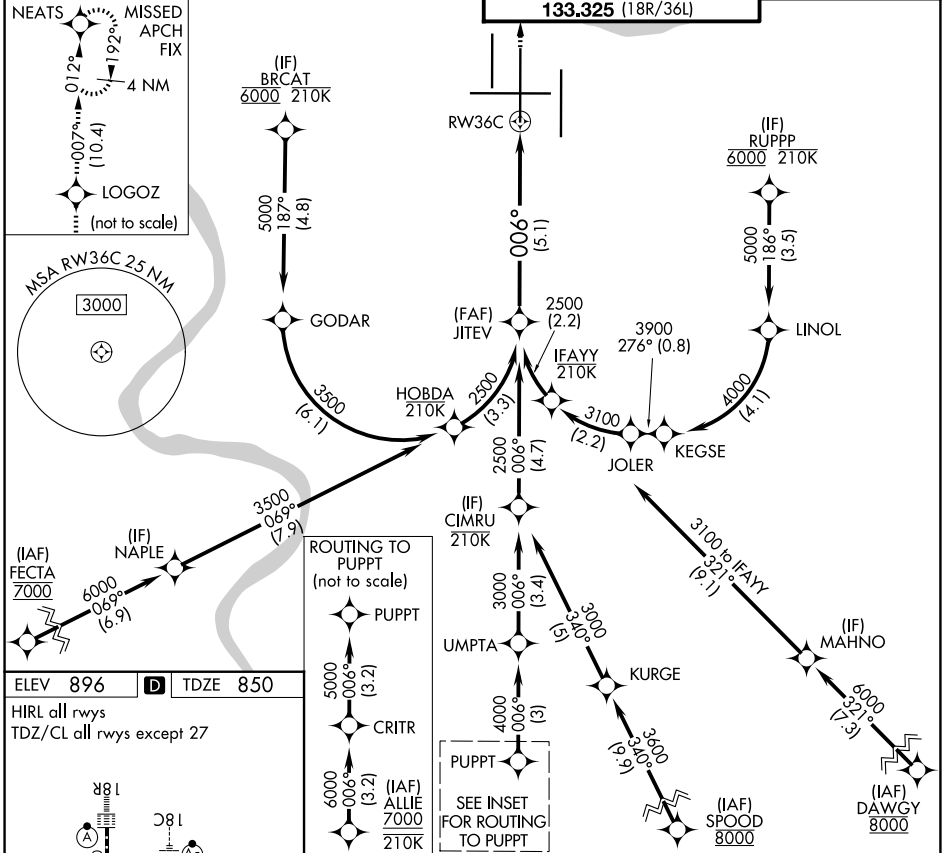
APP CRS	Rwy Ldg	11000
006°	TDZE	850
	Apt Elev	896

RNP AR APCH - GPS. Authorization required. From GODAR, HOBDA, IFAYY, or LINOL: RF. ALSF-2

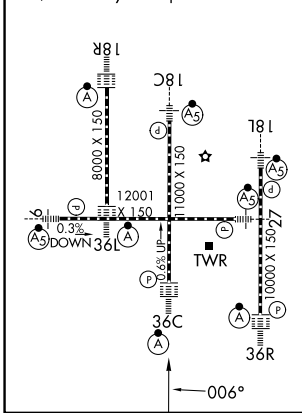
For uncompensated Baro-VNAV systems, procedure NA below -13°C or above 54°C. Simultaneous approach authorized. For inop ALS, increase RNP 0.30 DA all Cats visibilities to 1 $\frac{1}{2}$ SM.

MISSED APPROACH: Climb to 3000 direct LOGOZ and on track 007° to NEATS and hold.

D-ATIS 134.375	CINCINNATI APP CON 119.7 363.15 (090°-269°) 123.875 363.15 (270°-089°)	CINCINNATI TOWER 118.975 360.85 (18L/36R) 118.3 (9/27, 18C/36C) 133.325 (18R/36L)	GND CON 121.7
--------------------------	--	---	-------------------------



ELEV 896	D	TDZE 850
HIRL all rwys		
TDZ/CL all rwys except 27		



JITEV 2500 See planview for multiple IF locations.

3000 LOGOZ tr 007° NEATS

2500 006° RW36C

GP 3.00° TCH 52 VGSI and RNAV glidepath not coincident (VGSI Angle 3.00/TCH 77).

5.1 NM

CATEGORY	A	B	C	D
RNP 0.30 DA	1318/50		468 (500-1)	

AUTHORIZATION REQUIRED

SE-1, 11 JUN 2026 to 09 JUL 2026

SE-1, 11 JUN 2026 to 09 JUL 2026