

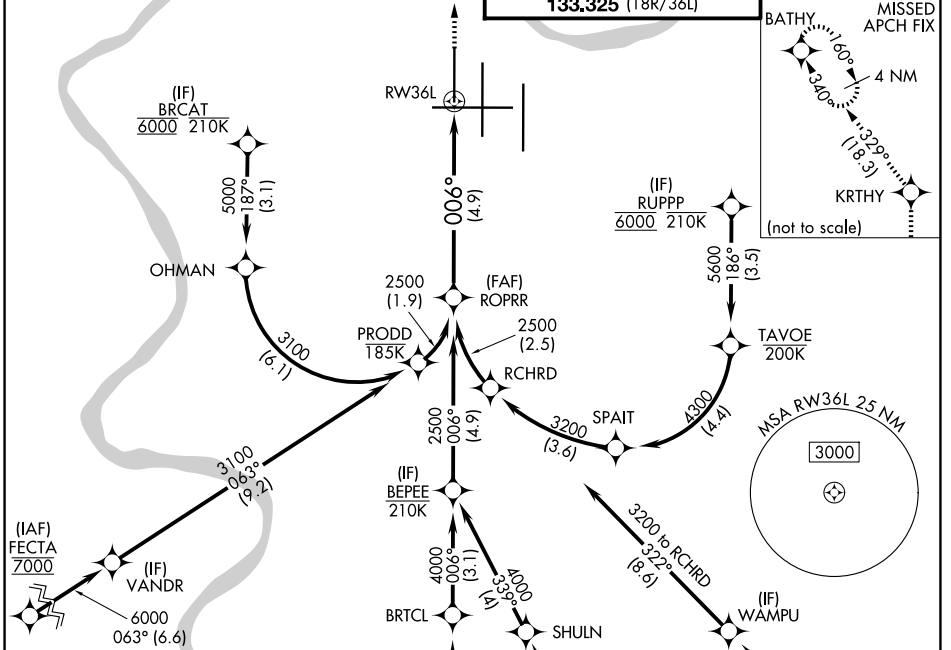
APP CRS	Rwy Ldg	<b>8000</b>
<b>006°</b>	TDZE	<b>873</b>
	Apt Elev	<b>896</b>

# RNAV (RNP) Z RWY 36L

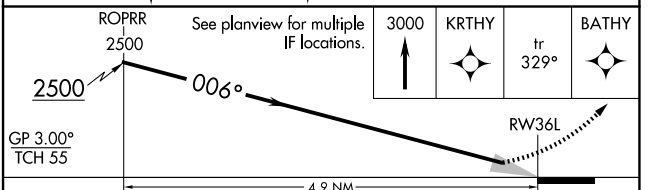
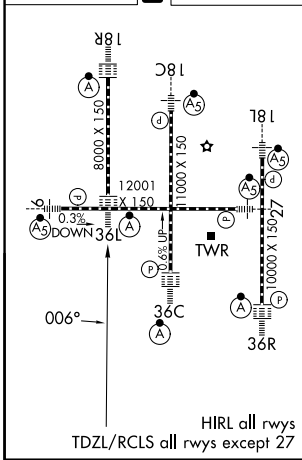
CINCINNATI/NORTHERN KENTUCKY INTL (CVG)

RNP AR APCH - GPS. Authorization required. From OHMAN, PRODD, RCHRD, or TAVOE: RF.	ALSF-2	MISSED APPROACH: Climb to 3000 direct KRTHY and on track 329° to BATHY and hold.
▼ For uncompensated Baro-VNAV systems, procedure NA below -13°C or above 54°C. Simultaneous approach authorized.		

D-ATIS <b>134.375</b>	CINCINNATI APP CON <b>119.7 363.15 (090°-269°)</b> <b>123.875 363.15 (270°-089°)</b>	CINCINNATI TOWER <b>118.975 360.85 (18L/36R)</b> <b>118.3 (9/27, 18C/36C)</b> <b>133.325 (18R/36L)</b>	GND CON <b>121.7</b>
--------------------------	--	---	-------------------------



ELEV 896	<b>D</b>	TDZE 873
----------	----------	----------



GP 3.00°	TCH 55			
CATEGORY	A	B	C	D
RNP 0.15 DA		1205/26	332 (400-1/2)	
RNP 0.30 DA		1270/35	397 (400-5/8)	

## AUTHORIZATION REQUIRED

SE-1, 11 JUN 2026 to 09 JUL 2026

SE-1, 11 JUN 2026 to 09 JUL 2026