

APP CRS	Rwy Ldg	10000
006°	TDZE	896
	Apt Elev	896

RNAV (RNP) Z RWY 36R

CINCINNATI/NORTHERN KENTUCKY INTL (CVG)

RNP AR APCH - GPS. Authorization required. From ALALE, BIBWY, LINOL, or YOTUL: RF.

For uncompensated Baro-VNAV systems, procedure NA below -13°C or above 54°C. Simultaneous approach authorized. For inop ALS, increase RNP 0.16 all Cats visibility to RVR 5500 and RNP 0.30 all Cats visibility to RVR 6000.



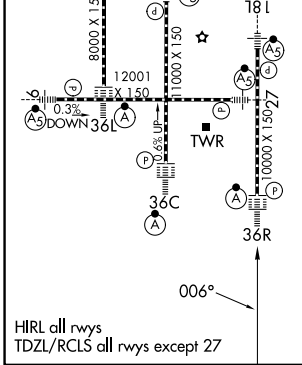
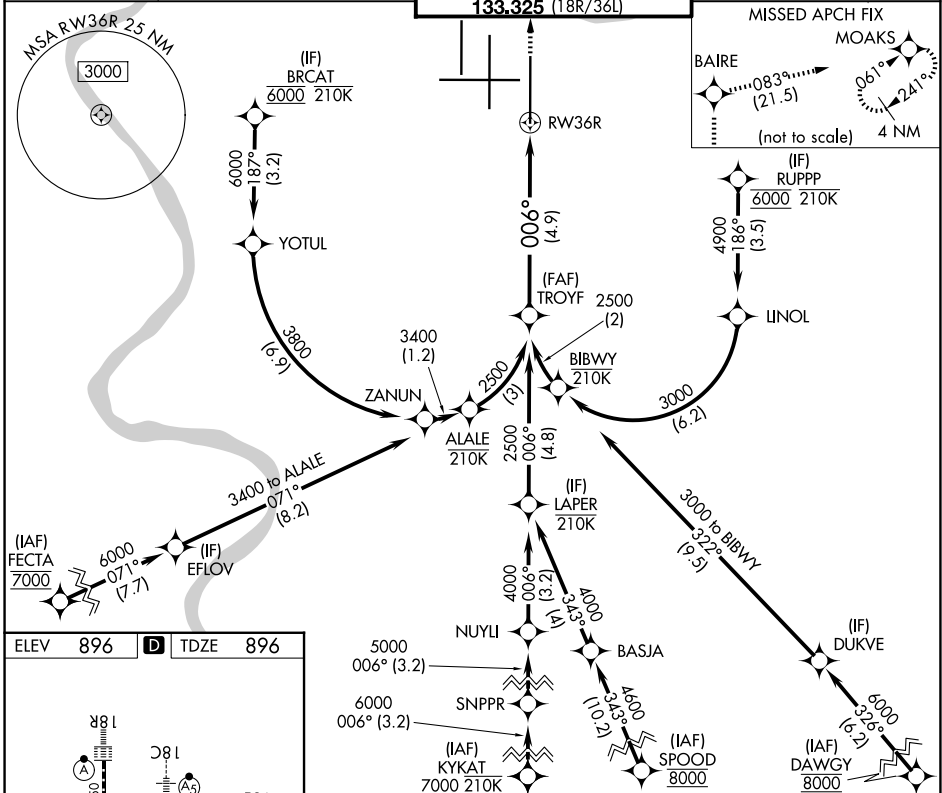
MISSED APPROACH: Climb to 3000 direct BAIRE and on track 083° to MOAKS and hold.

D-ATIS
134.375

CINCINNATI APP CON
119.7 363.15 (090°-269°)
123.875 363.15 (270°-089°)

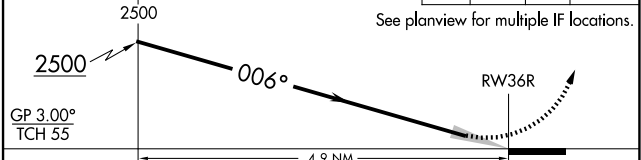
CINCINNATI TOWER
118.975 360.85 (18L/36R)
118.3 (9/27, 18C/36C)
133.325 (18R/36L)

GND CON
121.7



VGSI and RNAV glidepath not coincident (VGSI Angle 3.00/TCH 70).

3000 BAIRE ↑ tr 083° MOAKS



CATEGORY	A	B	C	D
RNP 0.16 DA		1242/30	346 (400-¾)	
RNP 0.30 DA		1308/40	412 (500-¾)	

SE-1, 11 JUN 2026 to 09 JUL 2026

SE-1, 11 JUN 2026 to 09 JUL 2026

HIRL all rwy's
TDZL/RCLS all rwy's except 27

AUTHORIZATION REQUIRED