

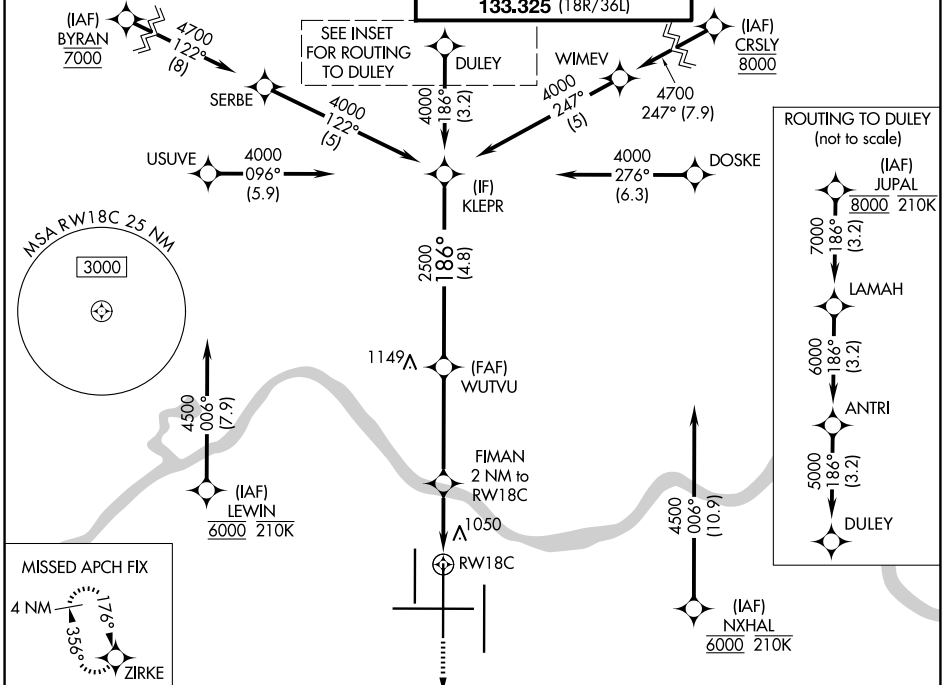
WAAS CH 86803 W18B	APP CRS 186°	Rwy Ldg 11000 TDZE 875 Apt Elev 896
--	------------------------	--

RNAV (GPS) Y RWY 18C

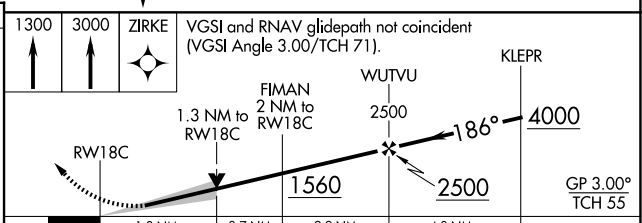
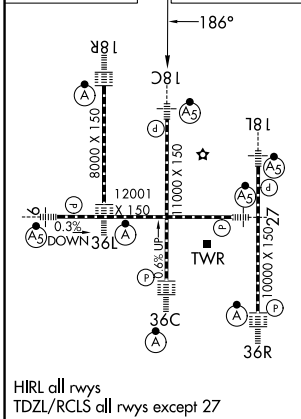
CINCINNATI/NORTHERN KENTUCKY INTL (CVG)

RNP APCH - GPS. ▼ For uncompensated Baro-VNAV systems, LNAV/VNAV NA below -13°C or above 54°C. LNAV procedure NA during simultaneous operations. Use of FD or AP required during simultaneous operations. Simultaneous approach authorized. For inop ALS, increase LNAV Cat C/D visibility to 1 3/8 SM.	MALSR 	MISSED APPROACH: Climb to 1300, then climb to 3000 direct ZIRKE and hold.
--	-----------	---

D-ATIS 134.375	CINCINNATI APP CON 119.7 363.15 (090°-269°) 123.875 363.15 (270°-089°)	CINCINNATI TOWER 118.975 360.85 (18L/36R) 118.3 (9/27, 18C/36C) 133.325 (18R/36L)	GND CON 121.7
--------------------------	--	---	-------------------------



ELEV 896	D	TDZE 875
----------	----------	----------



CATEGORY	A	B	C	D
LPV DA		1075/18	200 (200-1/2)	
LNAV/VNAV DA		1398/55	523 (600-1)	
LNAV MDA	1360/24	485 (500-1/2)	1360/50	485 (500-1)
CIRCLING	1460-1	564 (600-1)	1560-1 3/4 664 (700-1 3/4)	1560-2 664 (700-2)

SE-1, 11 JUN 2026 to 09 JUL 2026

SE-1, 11 JUN 2026 to 09 JUL 2026