

WAAS CH **42709** APP CRS **006°** Rwy Ldg **10000**
 TDZE **896**
W36D Apt Elev **896**

RNAV (GPS) Y RWY 36R

CINCINNATI/NORTHERN KENTUCKY INTL (CVG)

RNP APCH - GPS. ALSF-2

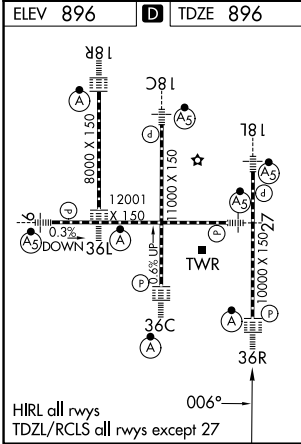
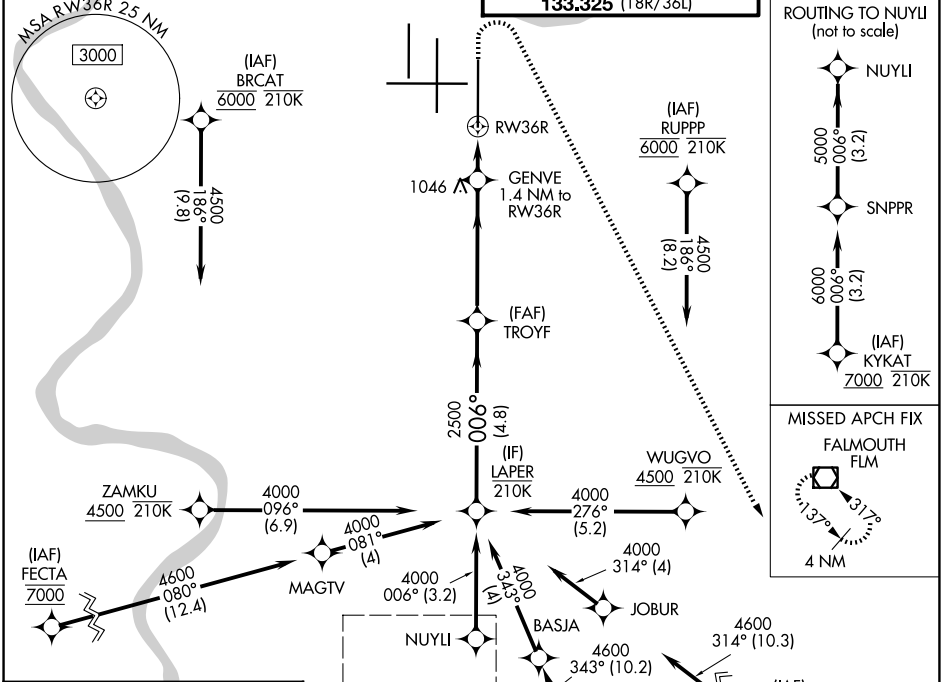
For uncompensated Baro-VNAV systems, LNAV/VNAV NA below -13°C or above 54°C. Simultaneous approach authorized. LNAV procedure NA during simultaneous operations. Use of FD or AP required during simultaneous operations. For inop ALS, increase LNAV Cats C and D visibility to 1½ SM.

MISSED APPROACH:
 Climb to 1500 then climbing right turn to 4000 direct FLM VOR/DME and hold.

D-ATIS **134.375** CINCINNATI APP CON **119.7 363.15** (090°-269°)
123.875 363.15 (270°-089°)

CINCINNATI TOWER **118.975 360.85** (18L/36R)
118.3 (9/27, 18C/36C)
133.325 (18R/36L)

GND CON **121.7**



GP 3.00° TCH 55

VGSI and RNAV glidepath not coincident (VGSI Angle 3.00/TCH 70).

CATEGORY	A	B	C	D
LPV DA		1096/18	200 (200-½)	
LNAV/VNAV DA		1340/45	444 (500-¾)	
LNAV MDA	1360/24	464 (500-½)	1360/50	464 (500-1)
CIRCLING	1460-1	564 (600-1)	1560-1¾ 664 (700-1¾)	1560-2 664 (700-2)

SE-1, 11 JUN 2026 to 09 JUL 2026

SE-1, 11 JUN 2026 to 09 JUL 2026