

LOC/DME I-ZK 109.9 Chan 36	APP CRS 222°	Rwy Ldg 7502 TDZE 933 Apt Elev 962
---	------------------------	---

ILS or LOC RWY 22

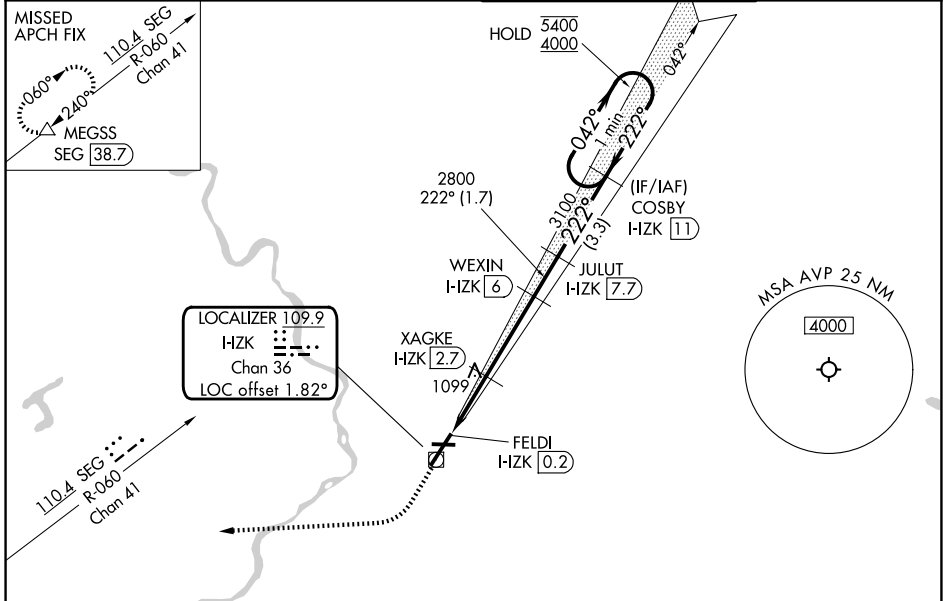
WILKES-BARRE/SCRANTON INTL (AVP)

RADAR required for procedure entry. DME required.

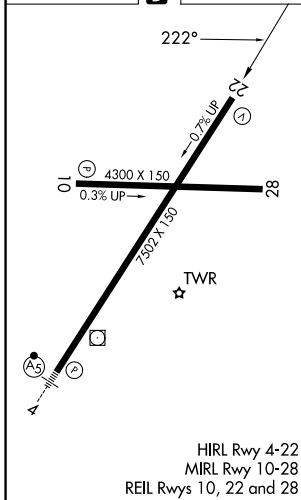
⚠ Circling NA for Cats C and D southeast of Rwy 4-22.
⚠ Circling Rwy 28 NA at night.

MISSED APPROACH: Climb to 1500 then climbing right turn to 4000 on heading 275° and SEG VOR/DME R-060 to MEGSS/ SEG 38.7 DME and hold.

ATIS 135.75	WILKES-BARRE APP CON 120.95 256.7 126.3 256.7 (280°-100°) (101°-279°)	WILKES-BARRE TOWER 120.1 257.8	GND CON 121.9
-----------------------	--	--	-------------------------



ELEV 962	D	TDZE 933
----------	----------	----------



1500	4000	SEG R-060	MEGSS	VGSI and ILS glidepath not coincident (VGSI Angle 3.00/TCH 54).	One Minute Holding Pattern
↑	hdg 275°				
				JULUT I-ZK (7.7)	COSBY I-ZK (11)
				XAGKE I-ZK (2.7)	
				WEXIN I-ZK (6)	
				FELDI I-ZK (0.2)	
				I-ZK (1.6)	
				I-ZK (2.7)	
				I-ZK (6)	
				I-ZK (7.7)	
				I-ZK (11)	
				I-ZK (0.2)	
				I-ZK (1.6)	
				I-ZK (2.7)	
				I-ZK (6)	
				I-ZK (7.7)	
				I-ZK (11)	
				I-ZK (0.2)	
				I-ZK (1.6)	
				I-ZK (2.7)	
				I-ZK (6)	
				I-ZK (7.7)	
				I-ZK (11)	
				I-ZK (0.2)	
				I-ZK (1.6)	
				I-ZK (2.7)	
				I-ZK (6)	
				I-ZK (7.7)	
				I-ZK (11)	
				I-ZK (0.2)	
				I-ZK (1.6)	
				I-ZK (2.7)	
				I-ZK (6)	
				I-ZK (7.7)	
				I-ZK (11)	
				I-ZK (0.2)	
				I-ZK (1.6)	
				I-ZK (2.7)	
				I-ZK (6)	
				I-ZK (7.7)	
				I-ZK (11)	
				I-ZK (0.2)	
				I-ZK (1.6)	
				I-ZK (2.7)	
				I-ZK (6)	
				I-ZK (7.7)	
				I-ZK (11)	
				I-ZK (0.2)	
				I-ZK (1.6)	
				I-ZK (2.7)	
				I-ZK (6)	
				I-ZK (7.7)	
				I-ZK (11)	
				I-ZK (0.2)	
				I-ZK (1.6)	
				I-ZK (2.7)	
				I-ZK (6)	
				I-ZK (7.7)	
				I-ZK (11)	
				I-ZK (0.2)	
				I-ZK (1.6)	
				I-ZK (2.7)	
				I-ZK (6)	
				I-ZK (7.7)	
				I-ZK (11)	
				I-ZK (0.2)	
				I-ZK (1.6)	
				I-ZK (2.7)	
				I-ZK (6)	
				I-ZK (7.7)	
				I-ZK (11)	
				I-ZK (0.2)	
				I-ZK (1.6)	
				I-ZK (2.7)	
				I-ZK (6)	
				I-ZK (7.7)	
				I-ZK (11)	
				I-ZK (0.2)	
				I-ZK (1.6)	
				I-ZK (2.7)	
				I-ZK (6)	
				I-ZK (7.7)	
				I-ZK (11)	
				I-ZK (0.2)	
				I-ZK (1.6)	
				I-ZK (2.7)	
				I-ZK (6)	
				I-ZK (7.7)	
				I-ZK (11)	
				I-ZK (0.2)	
				I-ZK (1.6)	
				I-ZK (2.7)	
				I-ZK (6)	
				I-ZK (7.7)	
				I-ZK (11)	
				I-ZK (0.2)	
				I-ZK (1.6)	
				I-ZK (2.7)	
				I-ZK (6)	
				I-ZK (7.7)	
				I-ZK (11)	
				I-ZK (0.2)	
				I-ZK (1.6)	
				I-ZK (2.7)	
				I-ZK (6)	
				I-ZK (7.7)	
				I-ZK (11)	
				I-ZK (0.2)	
				I-ZK (1.6)	
				I-ZK (2.7)	
				I-ZK (6)	
				I-ZK (7.7)	
				I-ZK (11)	
				I-ZK (0.2)	
				I-ZK (1.6)	
				I-ZK (2.7)	
				I-ZK (6)	
				I-ZK (7.7)	
				I-ZK (11)	
				I-ZK (0.2)	
				I-ZK (1.6)	
				I-ZK (2.7)	
				I-ZK (6)	
				I-ZK (7.7)	
				I-ZK (11)	
				I-ZK (0.2)	
				I-ZK (1.6)	
				I-ZK (2.7)	
				I-ZK (6)	
				I-ZK (7.7)	
				I-ZK (11)	
				I-ZK (0.2)	
				I-ZK (1.6)	
				I-ZK (2.7)	
				I-ZK (6)	
				I-ZK (7.7)	
				I-ZK (11)	
				I-ZK (0.2)	
				I-ZK (1.6)	
				I-ZK (2.7)	
				I-ZK (6)	
				I-ZK (7.7)	
				I-ZK (11)	
				I-ZK (0.2)	
				I-ZK (1.6)	
				I-ZK (2.7)	
				I-ZK (6)	
				I-ZK (7.7)	
				I-ZK (11)	
				I-ZK (0.2)	
				I-ZK (1.6)	
				I-ZK (2.7)	
				I-ZK (6)	
				I-ZK (7.7)	
				I-ZK (11)	
				I-ZK (0.2)	
				I-ZK (1.6)	
				I-ZK (2.7)	
				I-ZK (6)	
				I-ZK (7.7)	
				I-ZK (11)	
				I-ZK (0.2)	
				I-ZK (1.6)	
				I-ZK (2.7)	
				I-ZK (6)	
				I-ZK (7.7)	
				I-ZK (11)	
				I-ZK (0.2)	
				I-ZK (1.6)	
				I-ZK (2.7)	
				I-ZK (6)	
				I-ZK (7.7)	
				I-ZK (11)	
				I-ZK (0.2)	
				I-ZK (1.6)	
				I-ZK (2.7)	
				I-ZK (6)	
				I-ZK (7.7)	
				I-ZK (11)	
				I-ZK (0.2)	
				I-ZK (1.6)	
				I-ZK (2.7)	
				I-ZK (6)	
				I-ZK (7.7)	
				I-ZK (11)	
				I-ZK (0.2)	
				I-ZK (1.6)	
				I-ZK (2.7)	
				I-ZK (6)	
				I-ZK (7.7)	
				I-ZK (11)	
				I-ZK (0.2)	
				I-ZK (1.6)	
				I-ZK (2.7)	
				I-ZK (6)	
				I-ZK (7.7)	
				I-ZK (11)	
				I-ZK (0.2)	
				I-ZK (1.6)	
				I-ZK (2.7)	
				I-ZK (6)	
				I-ZK (7.7)	
				I-ZK (11)	
				I-ZK (0.2)	
				I-ZK (1.6)	
				I-ZK (2.7)	
				I-ZK (6)	
				I-ZK (7.7)	
				I-ZK (11)	
				I-ZK (0.2)	
				I-ZK (1.6)	
				I-ZK (2.7)	
				I-ZK (6)	
				I-ZK (7.7)	
				I-ZK (11)	
				I-ZK (0.2)	
				I-ZK (1.6)	
				I-ZK (2.7)	
				I-ZK (6)	
				I-ZK (7.7)	
				I-ZK (11)	
				I-ZK (0.2)	
				I-ZK (1.6)	
				I-ZK (2.7)	
				I-ZK (6)	
				I-ZK (7.7)	
				I-ZK (11)	
				I-ZK (0.2)	
				I-ZK (1.6)	
				I-ZK (2.7)	
				I-ZK (6)	
				I-ZK (7.7)	
				I-ZK (11)	
				I-ZK (0.2)	
				I-ZK (1.6)	
				I-ZK (2.7)	
				I-ZK (6)	
				I-ZK (7.7)	
				I-ZK (11)	
				I-ZK (0.2)	
				I-ZK (1.6)	
				I-ZK (2.7)	
				I-ZK (6)	
				I-ZK (7.7)	
				I-ZK (11)	
				I-ZK (0.2)	
				I-ZK (1.6)	
				I-ZK (2.7)	
				I-ZK (6)	
				I-ZK (7.7)	
				I-ZK (11)	
				I-ZK (0.2)	
				I-ZK (1.6)	