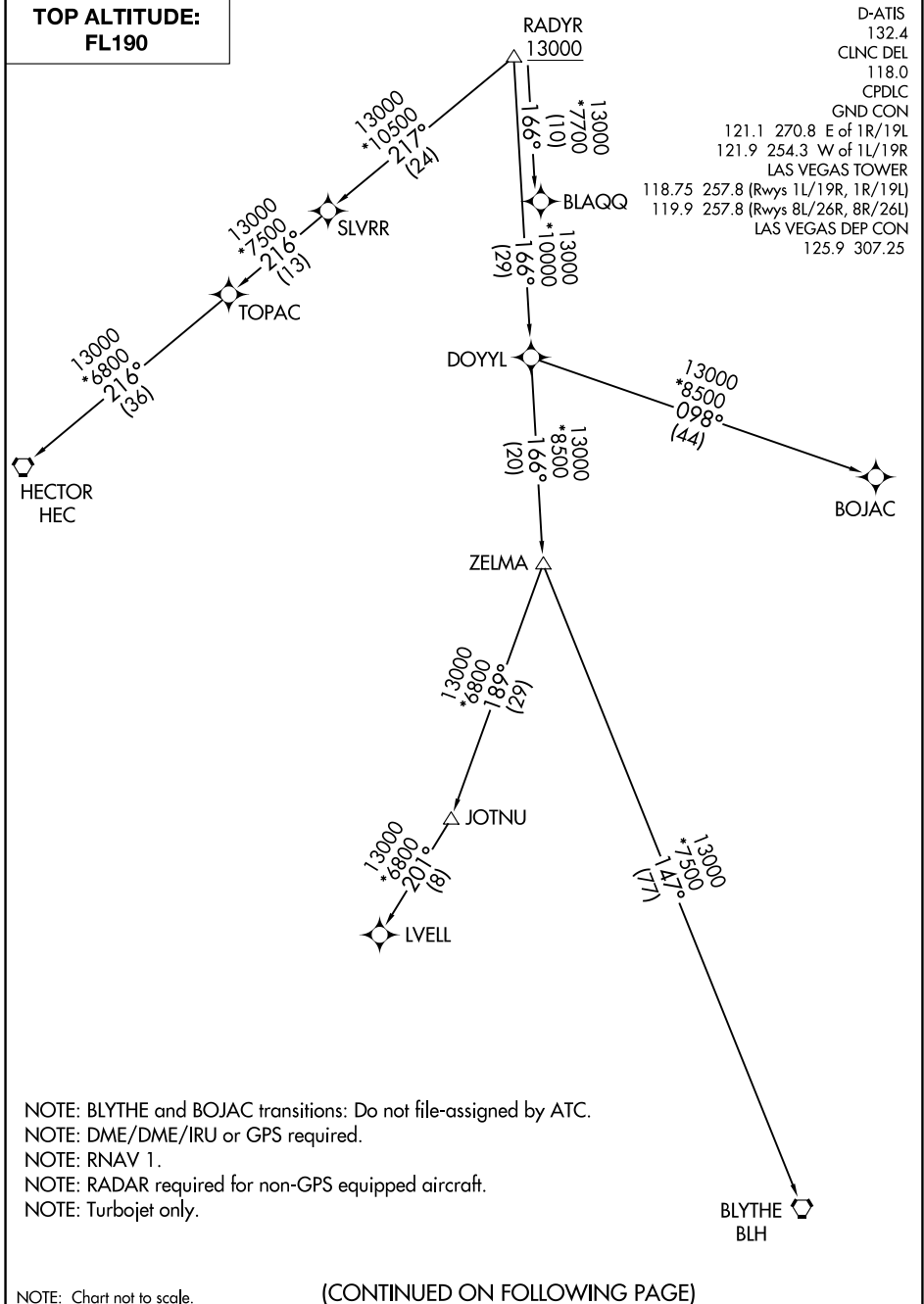


RADYR TWO DEPARTURE (RNAV) Transition Routes

**TOP ALTITUDE:
FL190**



D-ATIS 132.4
 CLNC DEL 118.0
 CPDLC
 GND CON 121.1 270.8 E of 1R/19L
 121.9 254.3 W of 1L/19R
 LAS VEGAS TOWER 118.75 257.8 (Rwys 1L/19R, 1R/19L)
 119.9 257.8 (Rwys 8L/26R, 8R/26L)
 LAS VEGAS DEP CON 125.9 307.25

SW-4, 11 JUN 2026 to 09 JUL 2026

SW-4, 11 JUN 2026 to 09 JUL 2026

NOTE: BLYTHE and BOJAC transitions: Do not file-assigned by ATC.
 NOTE: DME/DME/IRU or GPS required.
 NOTE: RNAV 1.
 NOTE: RADAR required for non-GPS equipped aircraft.
 NOTE: Turbojet only.

NOTE: Chart not to scale.

(CONTINUED ON FOLLOWING PAGE)

RADYR TWO DEPARTURE (RNAV) Transition Routes



DEPARTURE ROUTE DESCRIPTION

TAKEOFF RUNWAYS 1L/R: Climb on heading 014° to 2682, then left turn direct BESSY at or above 5000, then on track 191° to HRRLY, then on track 190° to cross GRUDN at or above 10000, then on track 171° to cross RADYR at or above 13000, thence. . . .

TAKEOFF RUNWAY 8L: Climb on heading 079° to intercept course 090° to cross FLAAR at or above 6000, then on track 152° to cross HNIBL at or above 8000 and at or below 230K, then on track 211° to VMPRE, then on track 249° to cross FLABB at or above 13000, then on track 190° to cross RADYR at or above 13000, thence. . . .

TAKEOFF RUNWAY 8R: Climb on heading 079° to 2682, then direct SCAAR, then on track 090° to cross FLAAR at or above 6000, then on track 152° to cross HNIBL at or above 8000 and at or below 230K, then on track 211° to VMPRE, then on track 249° to cross FLABB at or above 13000, then on track 190° to cross RADYR at or above 13000, thence. . . .

TAKEOFF RUNWAYS 19L/R: Climb on heading 194° to 2682, then direct DEREW at or below 7000, then on track 189° to cross RADYR at or above 13000, thence. . . .

TAKEOFF RUNWAY 26L: Climb on heading 259° to 2682, then direct SILTT, then on track 253° to cross RUDYY at or above 4000 and at or below 230K, then on track 189° to cross SELLZ at or below 8000, then on track 180° to cross RADYR at or above 13000, thence. . . .

TAKEOFF RUNWAY 26R: Climb on heading 259° to intercept course 249° to cross RUDYY at or above 4000 and at or below 230K, then on track 189° to cross SELLZ at or below 8000, then on track 180° to cross RADYR at or above 13000, thence. . . .

. . . . on (transition). Maintain FL190. Expect filed altitude 10 minutes after departure.

BLAQQ TRANSITION (RADYR2.BLAQQ)

BLYTHE TRANSITION (RADYR2.BLH)

BOJAC TRANSITION (RADYR2.BOJAC)

HECTOR TRANSITION (RADYR2.HEC)

LVELL TRANSITION (RADYR2.LVELL)

SLVRR TRANSITION (RADYR2.SLVRR)

SW-4, 11 JUN 2026 to 09 JUL 2026

SW-4, 11 JUN 2026 to 09 JUL 2026