


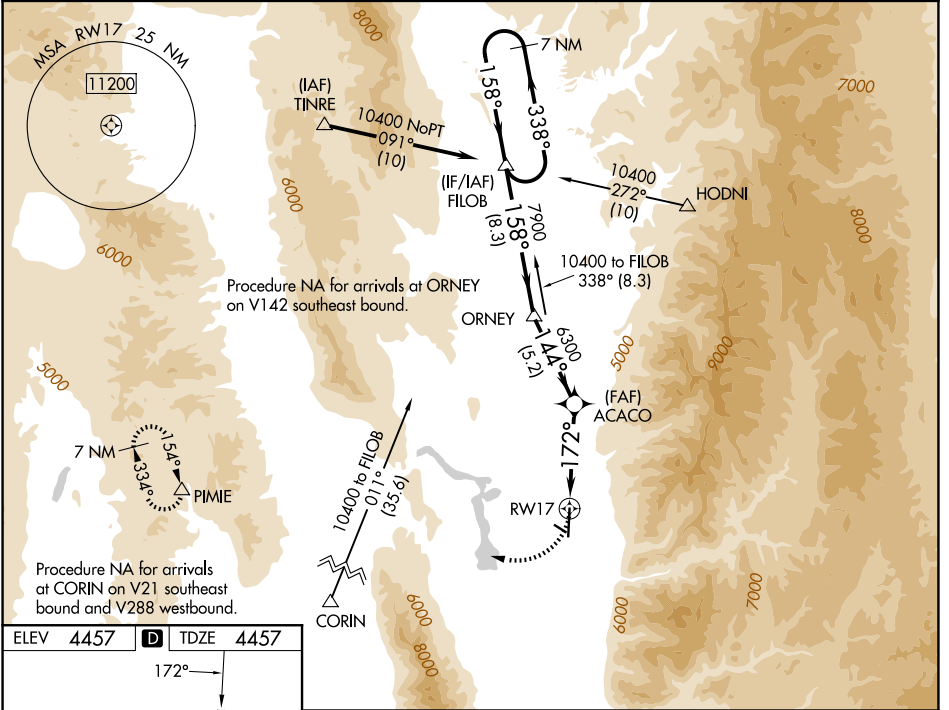
APP CRS	Rwy Ldg	9020
172°	TDZE	4457
	Apt Elev	4457

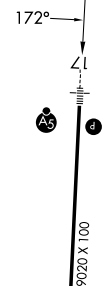
RNAV (GPS) RWY 17

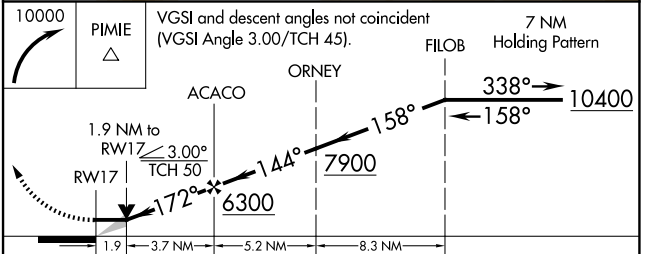
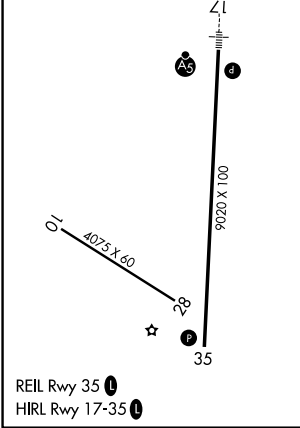
LOGAN-CACHE (LGU)

<p>▼</p> <p>▲</p> <p>⚠ -1.4°C</p>	<p>DME/DME RNP-0.3 NA. Circling NA east of Rwy 17-35.</p> <p>Night Landing: Rwy 10-28 NA.</p> <p>Inop table does not apply to LNAV Cats C/D.</p> <p>*Missed approach requires minimum climb of 310 feet per NM to 7700.</p>	<p>MALSR</p> 	<p>MISSED APPROACH:</p> <p>Climbing right turn to 10000 direct PIMIE and hold, continue climb-in-hold to 10000.</p>
--	---	--	--

<p>ASOS</p> <p>135.275</p>	<p>SALT LAKE CENTER</p> <p>127.7 354.125</p>	<p>UNICOM</p> <p>122.8 (CTAF) 0</p>
-----------------------------------	---	--



ELEV	4457	D	TDZE	4457
<p>172°</p> 				



CATEGORY	A	B	C	D
*LNAV MDA	5100-½	643 (700-½)	5100-1⅓	643 (700-1⅓)
LNAV MDA	5800-¾ 1343 (1400-¾)	5800-1 1343 (1400-1)	5800-3 1343 (1400-3)	1343 (1400-3)
CIRCLING	5800-1¼ 1343 (1400-1¼)	5800-1½ 1343 (1400-1½)	5800-3	1343 (1400-3)

SW-4, 11 JUN 2026 to 09 JUL 2026

SW-4, 11 JUN 2026 to 09 JUL 2026